



OFFERS OVER

£135,000

Green Street
Strathaven, ML10 6LT

PROPERTY SUMMARY

Conveniently located within the heart of Strathaven town centre is this charming, completely refurbished, traditional first floor flat. With a stunning facade, three double bedrooms, brand new interior and picturesque outlook to the rear across the John Hastie playing fields, this substantial property is sure to appeal to a broad section of buyers.

The generous accommodation comprises; communal close, broad and welcoming reception hallway, bright and spacious front facing lounge with log burning stove, and beautiful bay window, stylish newly fitted kitchen with oven, hob, and hood, master bedroom with feature fireplace, and bay window, newly fitted modern three-piece bathroom with over-bath shower, and two further good sized double bedrooms, one of which enjoys the best of the views to the rear.

This lovely period home further benefits from electric central heating with newly fitted boiler, double glazing, and communal secure close.

3



1



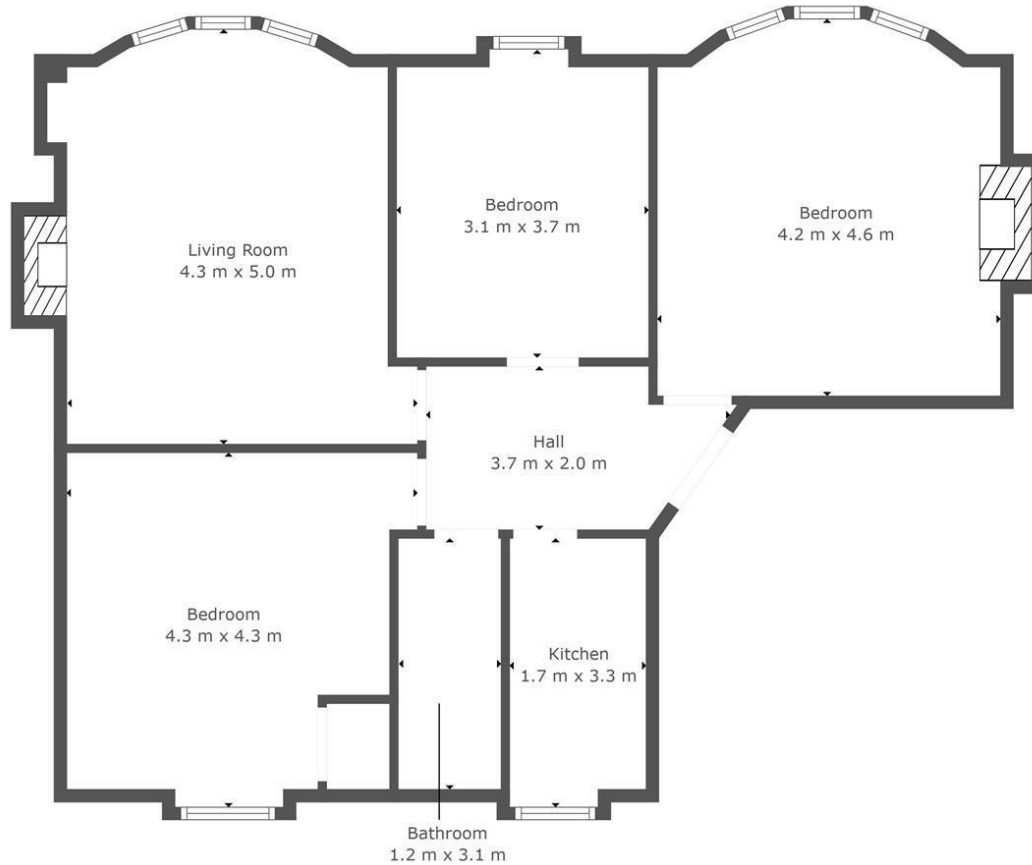
1











TOTAL: 84 m²
FLOOR 1: 84 m²
EXCLUDED AREAS: FIREPLACE: 2 m²

This Floorplan Is Intended To Give An Indication Of The Layout Only.

LOCAL AUTHORITY

South Lanarkshire

TENURE

Freehold

COUNCIL TAX BAND

C

VIEWINGS

By prior appointment only

Energy Efficiency Rating		
	Current	Potential
Very energy efficient - lower running costs		
(92 plus) A		
(81-91) B		82
(69-80) C		
(55-68) D	55	
(39-54) E		
(21-38) F		
(1-20) G		
Not energy efficient - higher running costs		
Scotland	EU Directive 2002/91/EC	

Agents Note: Whilst every care has been taken to prepare these particulars, they are for guidance purposes only. All measurements are approximate and are for general guidance purposes only and whilst every care has been taken to ensure their accuracy, they should not be relied upon and potential buyers/tenants are advised to recheck the measurements



OFFICE ADDRESS
9 Townhead Street
Strathaven
ML10 6AB

OFFICE DETAILS
01357 510088
judithmcgill@cruive-
estateagents.co.uk