

OFFERS OVER

£339,000

Lethame Road
Strathaven, ML10 6EF

PROPERTY SUMMARY

Located on what is arguably one of Strathaven's most sought-after addresses, positioned within a few minutes reach of the stunning surrounding countryside is this substantial detached four/five-bedroom villa. With bright, spacious, and flexible family accommodation, a generous South facing garden, and situated close to local excellent schooling, 107 Lethame Road offers a wonderful opportunity for a family to acquire their forever home.

The spacious and versatile layout of apartments comprises; entrance vestibule with double storm doors, broad and welcoming reception hallway, under-stairs storage cupboard, front facing family room/double bedroom four, stylish formal lounge with feature fireplace, fitted breakfasting kitchen, rear porch/utility room with access to garden, formal dining room, double bedroom three, and a modern three-piece family bathroom with over-bath shower, and useful storage cupboard.

On the upper level, accessed via a bright and airy landing you will find a further two double bedrooms and a third single bedroom, all of which benefit from fitted storage. Completing the first-floor accommodation is a modern three-piece shower room, and access to an abundance of eaves storage.

This lovely family home further benefits from gas central heating, double glazing, stylish oak doors at ground level, detached garage, and driveway. The gardens have evidently been very much loved and well-tended, with the large, child and pet friendly, fully enclosed rear garden enjoying an excellent South facing aspect. The rear garden is mainly laid to lawn, with a lovely variety of trees, plants, and shrubs and an attractive raised patio ideal for outdoor entertaining.

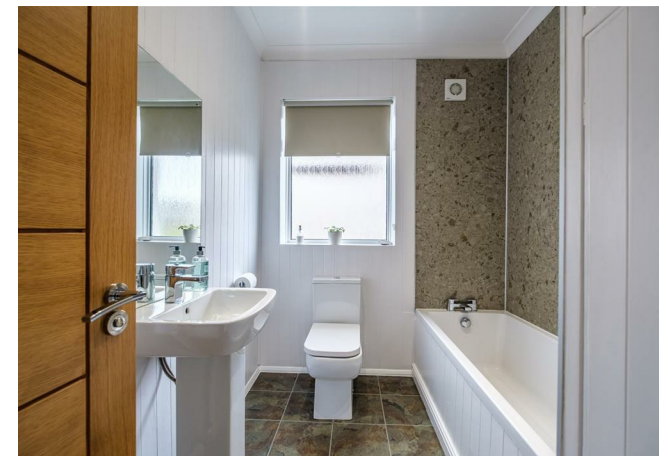
4



2



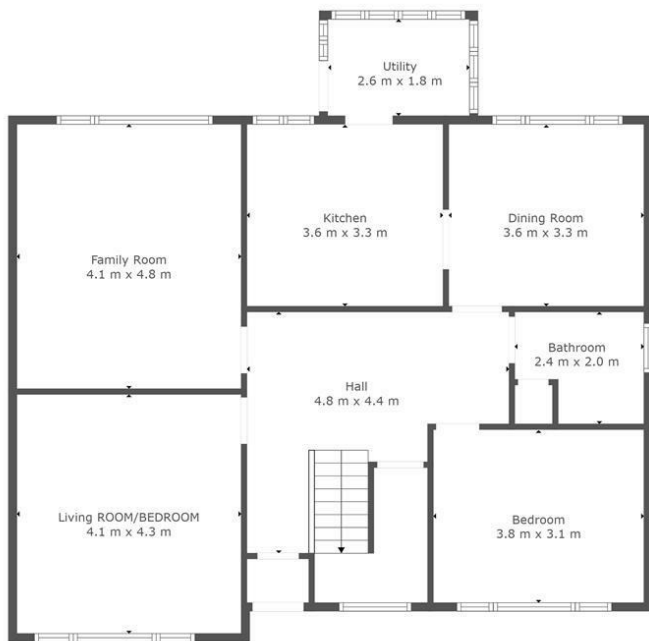
3



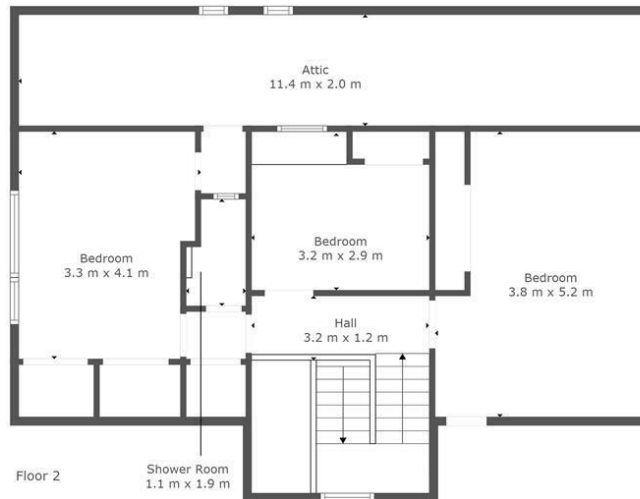








Floor 1



Floor 2



TOTAL: 159 m²
 FLOOR 1: 106 m², FLOOR 2: 53 m²
 EXCLUDED AREAS: LOW CEILING: 13 m², ATTIC: 19 m², " ": 3 m²
 This Floorplan Is Intended To Give An Indication Of The Layout Only.



LOCAL AUTHORITY

South Lanarkshire

TENURE

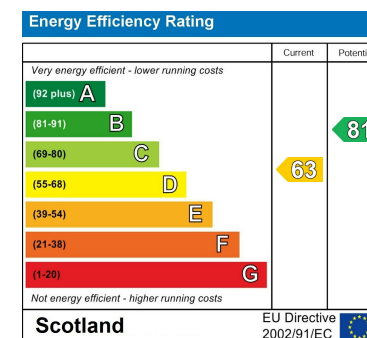
Freehold

COUNCIL TAX BAND

F

VIEWINGS

By prior appointment only



Agents Note: Whilst every care has been taken to prepare these particulars, they are for guidance purposes only. All measurements are approximate and are for general guidance purposes only and whilst every care has been taken to ensure their accuracy, they should not be relied upon and potential buyers/tenants are advised to recheck the measurements



OFFICE ADDRESS

9 Townhead Street
 Strathaven
 ML10 6AB

OFFICE DETAILS

01357 510088
 judithmcgill@cruive-
 estateagents.co.uk