

OFFERS OVER

**£95,000**

**Lochaber Drive**  
Glasgow, G73 5HY



## PROPERTY SUMMARY

\*\*\*CLOSING DATE TUESDAY 8TH APRIL @ 12PM\*\*\* Positioned on the periphery of Springhall, is this spacious end-terrace villa in need of some upgrading. With three well-proportioned bedrooms, generous garden, and location adjacent to the local primary school, the property offers a great opportunity for a first-time buyer or family.

The accommodation comprises; large front facing lounge, dining size kitchen with under-stairs pantry cupboard, and access to rear garden, three generous bedrooms on the upper level, and modern three-piece shower/wet room.

The property further benefits from double glazing, electric heating, and sizeable front and rear gardens. The front garden is well-tended and mainly laid to lawn, the rear is slabbed for easy maintenance and has a storage shed.

3



1



1







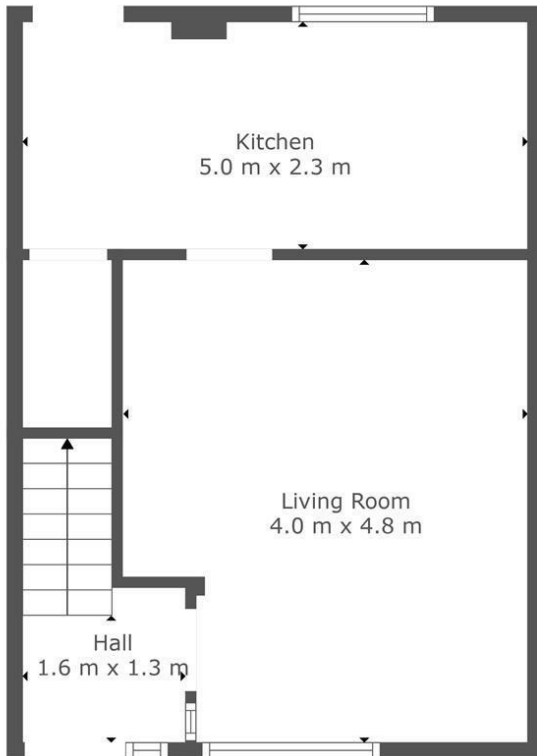




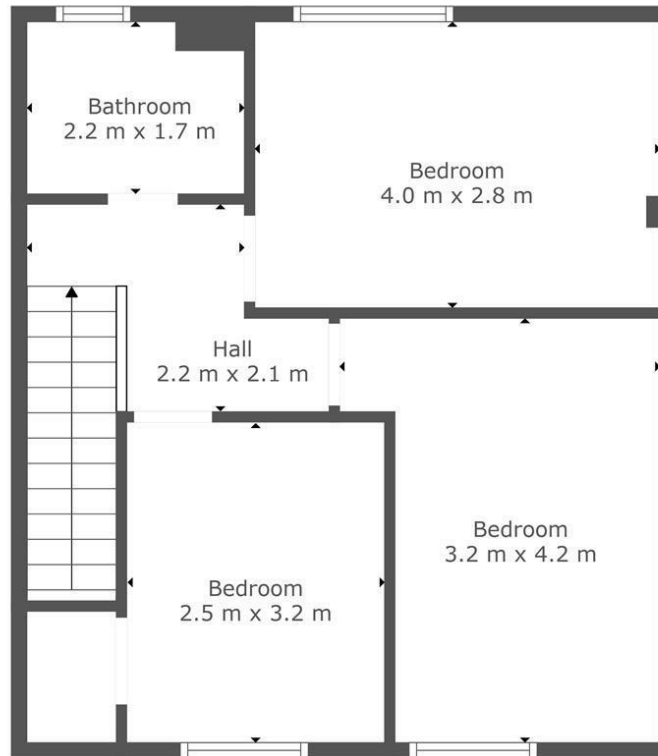








Floor 1



Floor 2



TOTAL: 81 m<sup>2</sup>  
FLOOR 1: 36 m<sup>2</sup>, FLOOR 2: 45 m<sup>2</sup>

This Floorplan Is Intended To Give An Indication Of The Layout Only.

## LOCAL AUTHORITY

Glasgow City

## TENURE

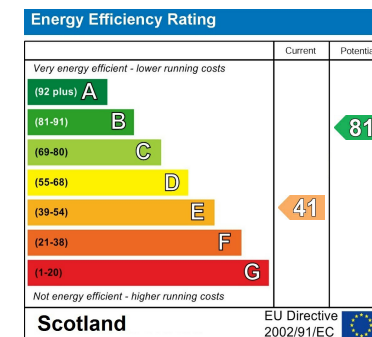
Freehold

## COUNCIL TAX BAND

C

## VIEWINGS

By prior appointment only



Agents Note: Whilst every care has been taken to prepare these particulars, they are for guidance purposes only. All measurements are approximate and are for general guidance purposes only and whilst every care has been taken to ensure their accuracy, they should not be relied upon and potential buyers/tenants are advised to recheck the measurements



## OFFICE ADDRESS

9 Townhead Street  
Strathaven  
ML10 6AB

## OFFICE DETAILS

01357 510088  
judithmcgill@cruive-  
estateagents.co.uk