



OFFERS OVER

£182,000

Cam'Nethan Street
Stonehouse, ML9 3NQ

PROPERTY SUMMARY

Located within the heart of Stonehouse, this Victorian extended terraced cottage appears unassuming from first glance, however behind traditional facade lies a substantial layout of versatile all on the level accommodation. With rear access, garage, driveway, generous South facing garden, and open aspect over the surrounding countryside to the rear, this lovely family home is sure to appeal to a broad section of buyers.

The deceptively spacious accommodation comprises; reception hallway, four double bedrooms; master with fitted storage and modern three-piece en-suite shower room, modern four-piece family bathroom, shaker style kitchen with island open to lounge, and large family/dining room flooded with light from the South facing aspect and with French doors leading to garden.

This lovely family home further benefits from gas central heating, double glazing, rear access, driveway for several cars, and detached garage. The generous South facing garden is mainly laid to lawn, with patio area ideal for outdoor entertaining.

4



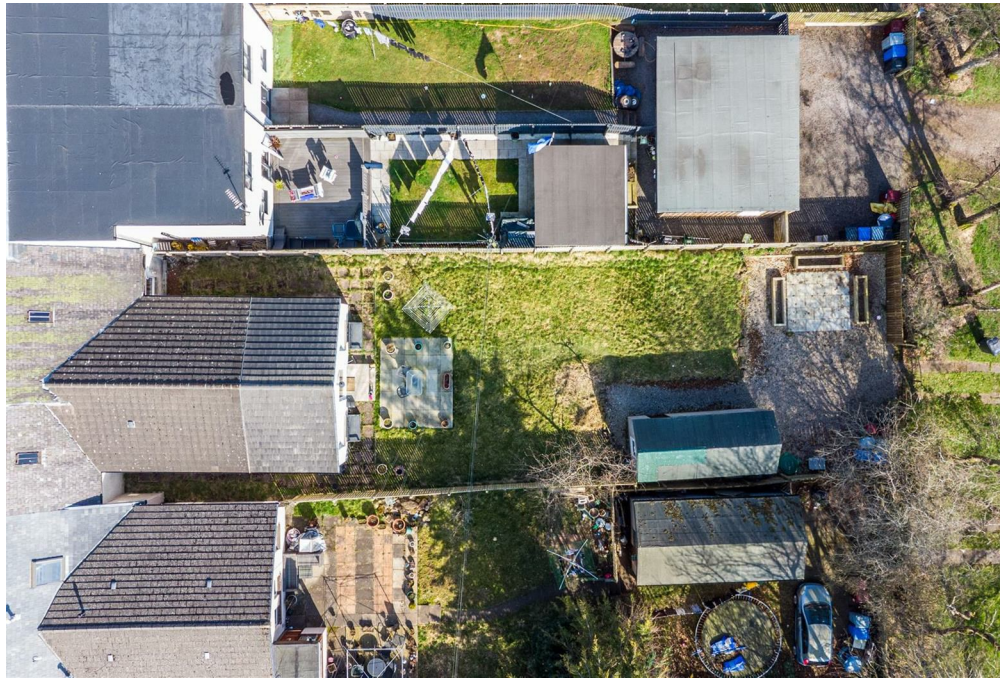
2



2











TOTAL: 144 m2
FLOOR 1: 144 m2
EXCLUDED AREAS: "H": 1 m2, BAY WINDOW: 2 m2

This Floorplan Is Intended To Give An Indication Of The Layout Only.



OFFICE ADDRESS
9 Townhead Street
Strathaven
ML10 6AB

OFFICE DETAILS
01357 510088
judithmcgill@cruive-
estateagents.co.uk

LOCAL AUTHORITY

South Lanarkshire

TENURE

Freehold

COUNCIL TAX BAND

C

VIEWINGS

By prior appointment only

Energy Efficiency Rating		
	Current	Potential
Very energy efficient - lower running costs		
(92 plus) A		
(81-91) B		
(69-80) C		
(55-68) D		
(39-54) E		
(21-38) F		
(1-20) G		
Not energy efficient - higher running costs		
Scotland		EU Directive 2002/91/EC

Agents Note: Whilst every care has been taken to prepare these particulars, they are for guidance purposes only. All measurements are approximate and are for general guidance purposes only and whilst every care has been taken to ensure their accuracy, they should not be relied upon and potential buyers/tenants are advised to recheck the measurements