



cruise
ESTATE AGENTS

OFFERS OVER

£89,950

Park Crescent
Strathaven, ML10 6NH

PROPERTY SUMMARY

This centrally located, very stylishly presented upper cottage flat has been lovingly modernised by the current owners. With recently fitted kitchen and bathroom, fabulous decor throughout and a private garden where lots of time, money and energy has been spent, this lovely home will make a great first time buy or downsize for a lucky purchaser.

Entered at ground level the accommodation comprises; inner ground hallway with stairway leading to main apartments, upper reception hallway, bright front facing lounge, stunning and cleverly designed modern fitted kitchen with integrated oven, hob, hood, fridge/freezer, and dishwasher.

Bedrooms one and two are double sized, both with storage cupboards. The spacious and well-maintained apartments are completed by a modern three-piece shower room, and a large hall storage cupboard.

This fantastic property further benefits from gas central heating, double glazing, substantial partially floored attic, and generous, well-kept, fully enclosed, private gardens with a variety of well-stocked borders, lawn, drying area, and a bird mecca to the rear where the garden has been allowed to remain more natural for this purpose.

2



1



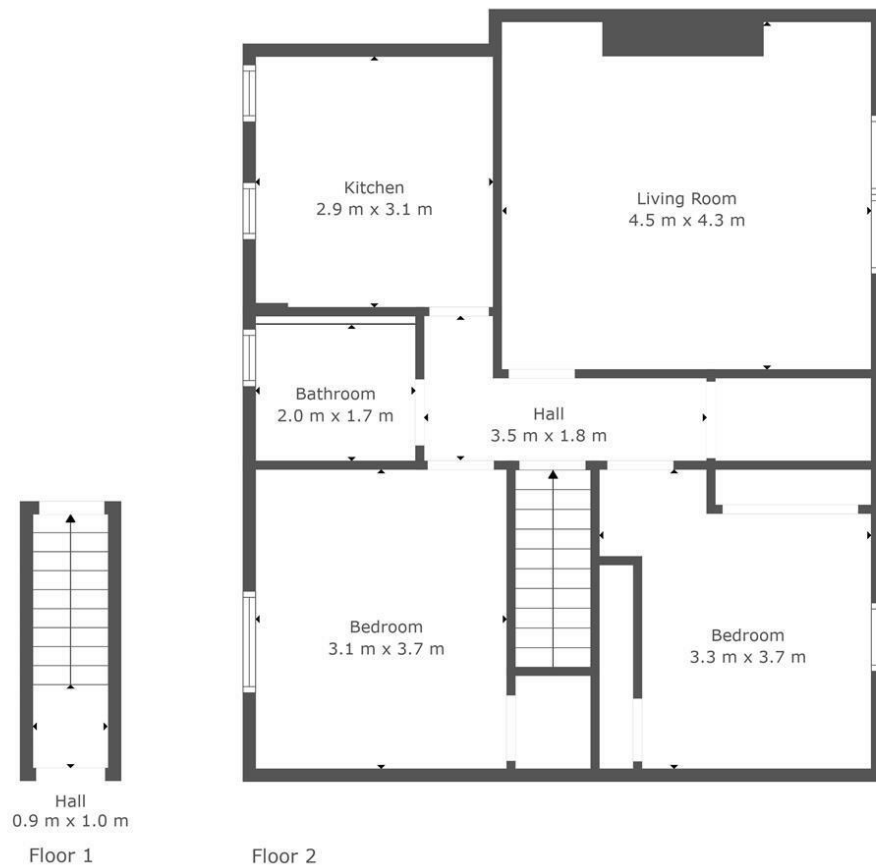
1











TOTAL: 71 m²
BELOW GROUND: 3 m², FLOOR 2: 68 m²

This Floorplan Is Intended To Give An Indication Of The Layout Only.

LOCAL AUTHORITY

South Lanarkshire

TENURE

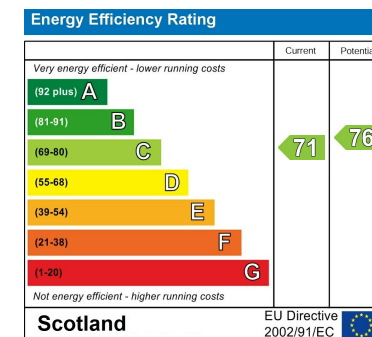
Freehold

COUNCIL TAX BAND

A

VIEWINGS

By prior appointment only



Agents Note: Whilst every care has been taken to prepare these particulars, they are for guidance purposes only. All measurements are approximate and are for general guidance purposes only and whilst every care has been taken to ensure their accuracy, they should not be relied upon and potential buyers/tenants are advised to recheck the measurements



cruive
ESTATE AGENTS

OFFICE ADDRESS

9 Townhead Street
Strathaven
ML10 6AB

OFFICE DETAILS

01357 510088
judithmcgill@cruive-
estateagents.co.uk