

cruise
ESTATE AGENTS

01357 510088
www.cruise-estateagents.co.uk
FOR SALE
cruise
ESTATE AGENTS

OFFERS OVER

£85,000

Paterson Place
Larkhall, ML9 3HW

PROPERTY SUMMARY

CLOSING DATE THURSDAY 23RD JAN @ 12PM Positioned towards the end of a small child friendly cul de sac is this nicely presented two-bedroom mid terrace villa. Located within the village of Stonehouse close to local amenities and access onto the M74 road network, this lovely home would make a fantastic first time buy or family home.

The tastefully decorated and spacious accommodation comprises; reception hallway, bright front facing lounge and modern fitted breakfasting size kitchen with oven, hob and hood, large pantry cupboard and access onto rear garden.

On the upper level are two generous double bedrooms both with built-in wardrobes and one with an additional storage cupboard. A modern three-piece shower room completes the first-floor accommodation. The loft can be accessed via a hatch from the upper hallway.

The property further benefits from electric heating, double glazing, driveway and fully enclosed easily maintained garden with artificial grass, patio area and storage shed.

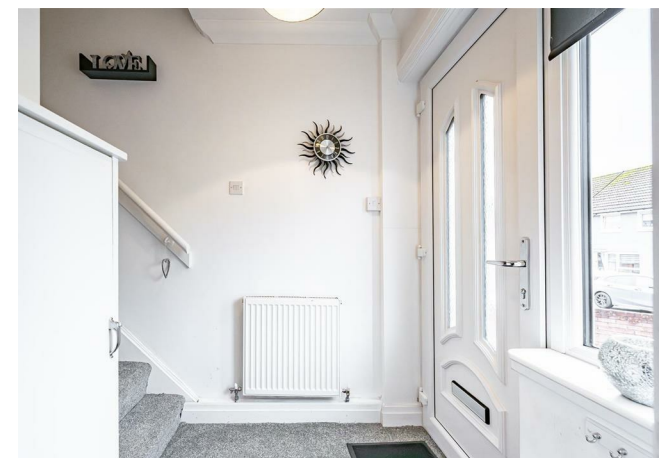
2



1



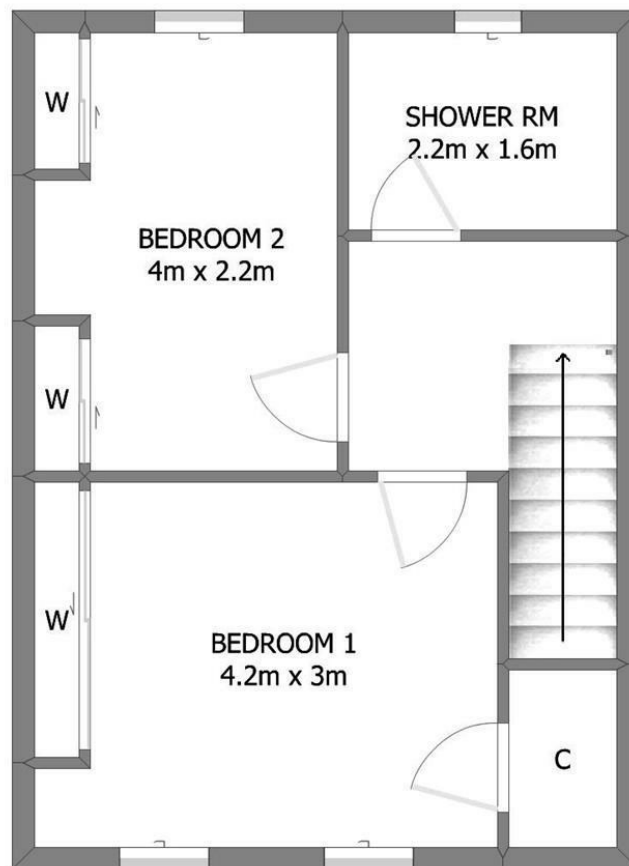
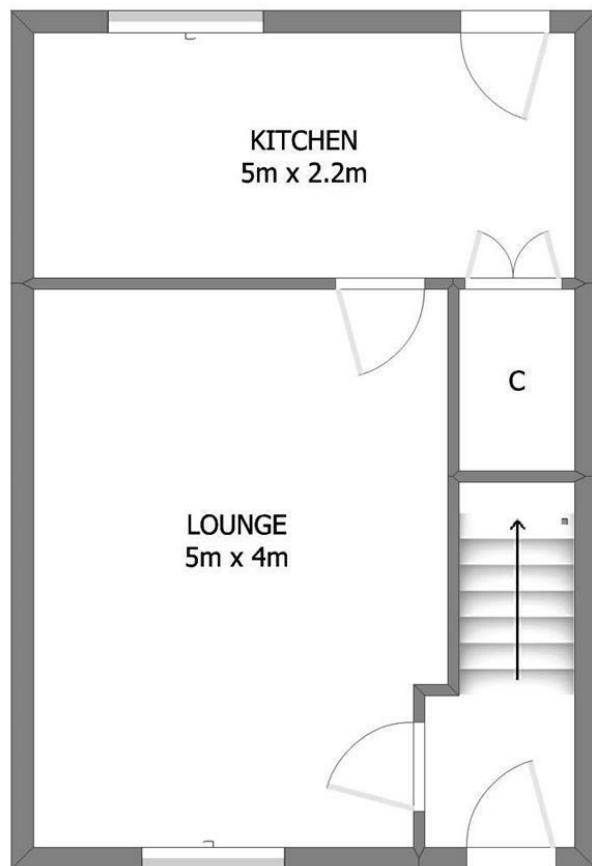
1











LOCAL AUTHORITY

South Lanarkshire

TENURE

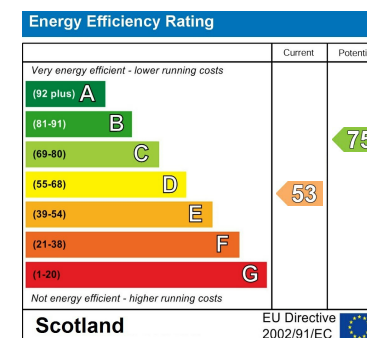
Freehold

COUNCIL TAX BAND

A

VIEWINGS

By prior appointment only



Agents Note: Whilst every care has been taken to prepare these particulars, they are for guidance purposes only. All measurements are approximate and are for general guidance purposes only and whilst every care has been taken to ensure their accuracy, they should not be relied upon and potential buyers/tenants are advised to recheck the measurements

cruive
ESTATE AGENTS
18 Paterson Place
Stonehouse, ML9 3HW

cruive
ESTATE AGENTS

OFFICE ADDRESS
9 Townhead Street
Strathaven
ML10 6AB

OFFICE DETAILS
01357 510088
judithmcgill@cruive-
estateagents.co.uk