

cruise
ESTATE AGENTS

OFFERS OVER

£289,000

Glasgow Road
Strathaven, ML10 6NF

PROPERTY SUMMARY

This truly stunning traditional cottage with beautiful open views over Strathaven Park and surrounding countryside has been meticulously, lovingly, and sympathetically restored. Having undergone an extensive programme of renovation this lovely home has been finished to an extremely high standard whilst managing to retain its period charm.

Upon entering the property at ground level, the accommodation comprises; reception hallway, two-piece cloaks/wc and stylish modern fitted kitchen with range cooker, integrated appliances, breakfast bar and pantry cupboard. The kitchen is open plan to a dining room best placed to enjoy the incredible views. From this area there is access onto the rear garden.

Also at ground level is a formal lounge with traditional feature fireplace and log burning stove, dual aspects to front and rear and storage and a family room/bedroom four. A beautifully crafted staircase from the lounge leads to the upper floor. Accessed via the upper landing are three bright and airy bedrooms and a large, fitted study with storage. The master bedroom has a modern three-piece shower room and fitted wardrobes. Completing the first-floor accommodation is a modern three-piece family bathroom with over-bath shower.

4



2



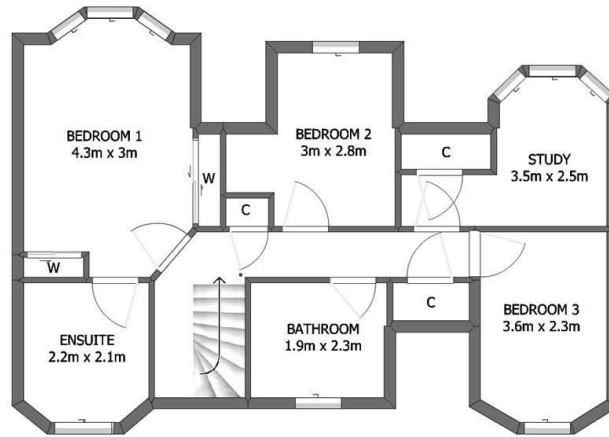
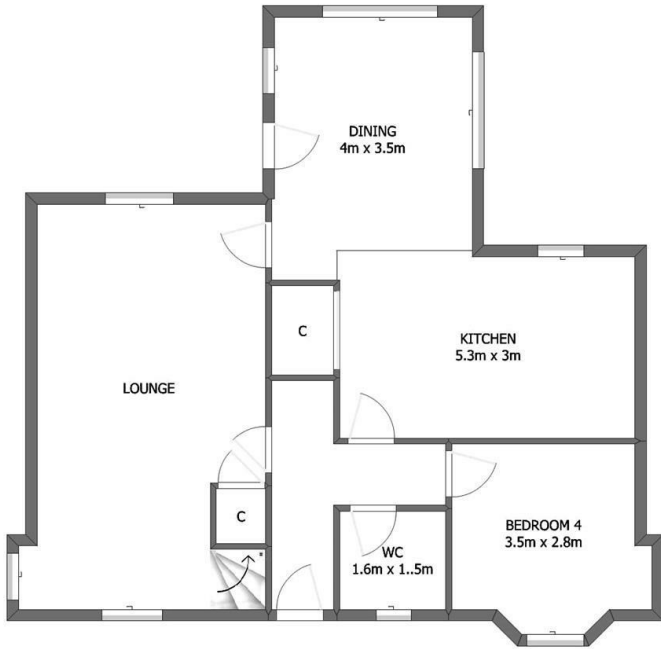
2











cruive 83 Glasgow Rd
Strathaven ML10 6NF



OFFICE ADDRESS
9 Townhead Street
Strathaven
ML10 6AB

OFFICE DETAILS
01357 510088
judithmcgill@cruive-
estateagents.co.uk

LOCAL AUTHORITY

South Lanarkshire

TENURE

COUNCIL TAX BAND

D

VIEWINGS

By prior appointment only

Energy Efficiency Rating		
	Current	Potential
<i>Very energy efficient - lower running costs</i>		
(92 plus) A		
(81-91) B		
(69-80) C	75	84
(55-68) D		
(39-54) E		
(21-38) F		
(1-20) G		
<i>Not energy efficient - higher running costs</i>		
Scotland	EU Directive 2002/91/EC	

Agents Note: Whilst every care has been taken to prepare these particulars, they are for guidance purposes only. All measurements are approximate and are for general guidance purposes only and whilst every care has been taken to ensure their accuracy, they should not be relied upon and potential buyers/tenants are advised to recheck the measurements