

OFFERS OVER

£89,950

Park View
Strathaven, ML10 6NW

PROPERTY SUMMARY

Perfectly located within central Strathaven, close by to shops, cafes, bars and restaurants, this lovely ground floor flat enjoys an attractive outlook across neighbouring park land. The all on the level, generously proportioned accommodation would be ideal for downsizers or a first-time buyer.

Positioned at ground floor level within the immaculately maintained development Park View the accommodation comprises entrance hallway with two good size cupboards, large lounge with feature fireplace and aspect overlooking the park, fitted dining size kitchen with appliances also with view to rear, double bedroom with fitted storage and modern four-piece bathroom with separate shower.

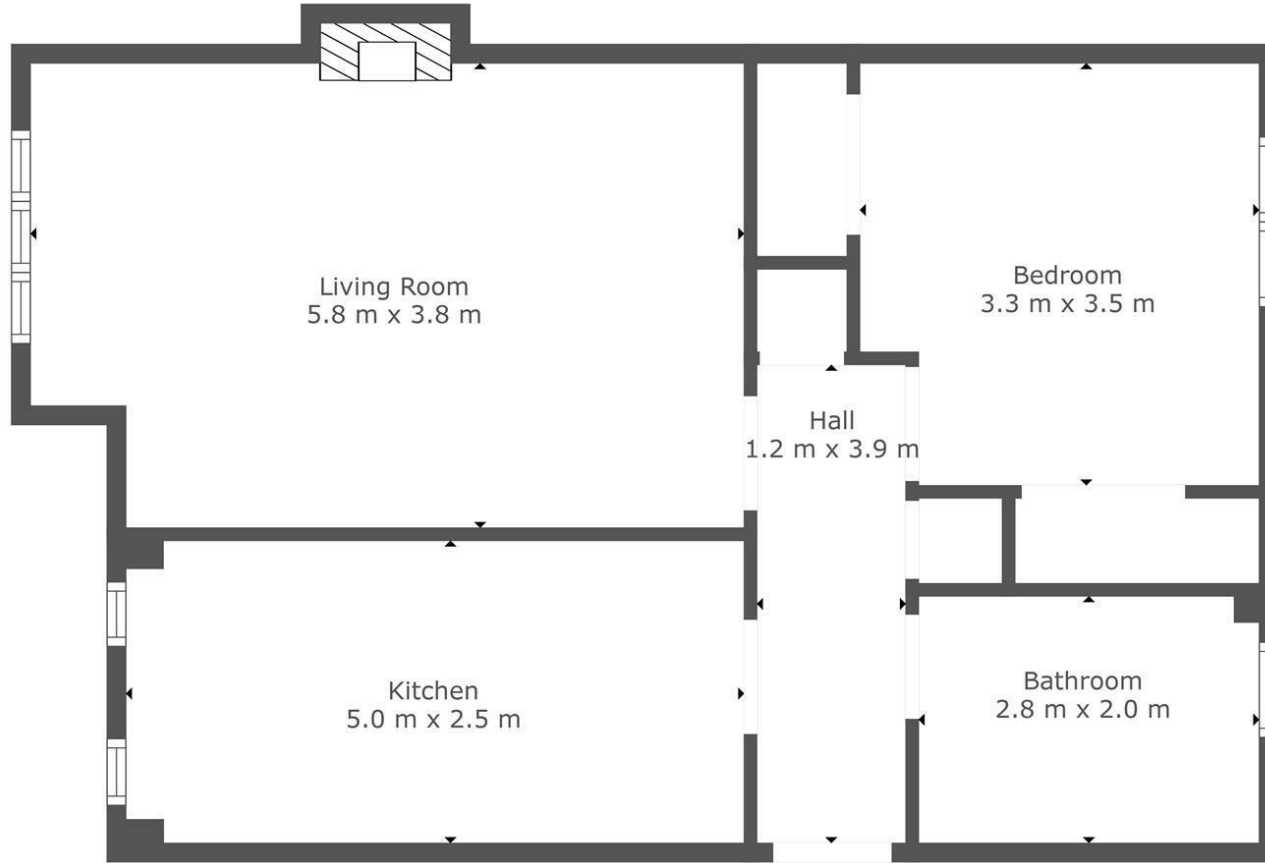
This perfectly formed apartment also benefits gas central heating, double glazing, secure entry system, immaculately maintained communal close, private parking and communal garden to rear.











LOCAL AUTHORITY

South Lanarkshire

TENURE

Freehold

COUNCIL TAX BAND

D

VIEWINGS

By prior appointment only

Energy Efficiency Rating		Current	Potential
<i>Very energy efficient - lower running costs</i>			
(82 plus) A			
(81-81) B			
(69-80) C		71	77
(55-68) D			
(39-54) E			
(21-38) F			
(1-20) G			
<i>Not energy efficient - higher running costs</i>			
Scotland		EU Directive 2002/91/EC	

Agents Note: Whilst every care has been taken to prepare these particulars, they are for guidance purposes only. All measurements are approximate and are for general guidance purposes only and whilst every care has been taken to ensure their accuracy, they should not be relied upon and potential buyers/tenants are advised to recheck the measurements



TOTAL: 61 m²
FLOOR 1: 61 m²
EXCLUDED AREAS: FIREPLACE: 0 m²
 This Floorplan Is Intended To Give An Indication Of The Layout Only.



OFFICE ADDRESS
 9 Townhead Street
 Strathaven
 ML10 6AB

OFFICE DETAILS
 01357 510088
 judithmcgill@cruive-estateagents.co.uk