



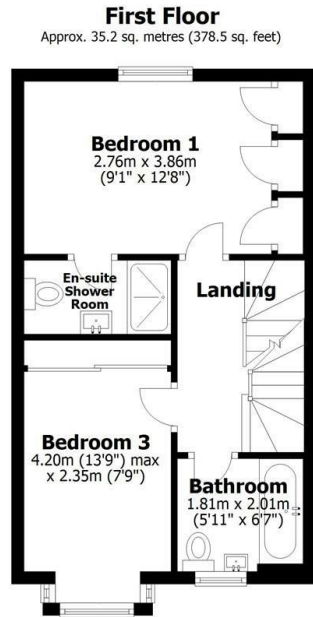
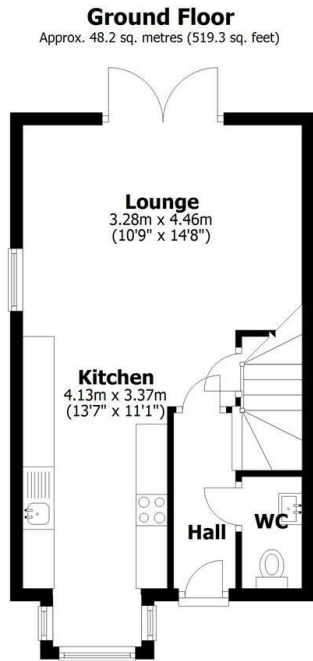
the agent



19 Canal Court, Saxilby, LN1 2GT

Asking Price £235,000

- Three Double Bedroom Townhouse
- Downstairs WC
- Landscaped Garden
- Council Tax Band B - West Lindsey District Council
- 2 x Ensuite Shower Rooms and Family Bathroom
- 2 x Allocated Parking Spaces
- Close to amenities
- Open Plan Kitchen/Living
- Beautifully Presented Throughout
- EPC Rating B



Total area: approx. 110.7 sq. metres (1191.2 sq. feet)

This plan is for layout guidance only. Not drawn to scale unless stated. Windows and door openings are approximate. Whilst every care is taken in the preparation of this plan, please check all dimensions, shapes and compass bearings before making any decisions reliant upon them. All interested parties must verify their accuracy independently.
Plan produced using PlanUp.



Directions

Viewings

Viewings by arrangement only. Call 01522 396059 to make an appointment.

Council Tax Band

A

EPC Rating:

B

Energy Efficiency Rating		Current	Potential
Very energy efficient - lower running costs			
(92 plus) A			92
(81-91) B		83	
(69-80) C			
(55-68) D			
(39-54) E			
(21-38) F			
(1-20) G			
Not energy efficient - higher running costs			
England & Wales		EU Directive 2002/91/EC	