



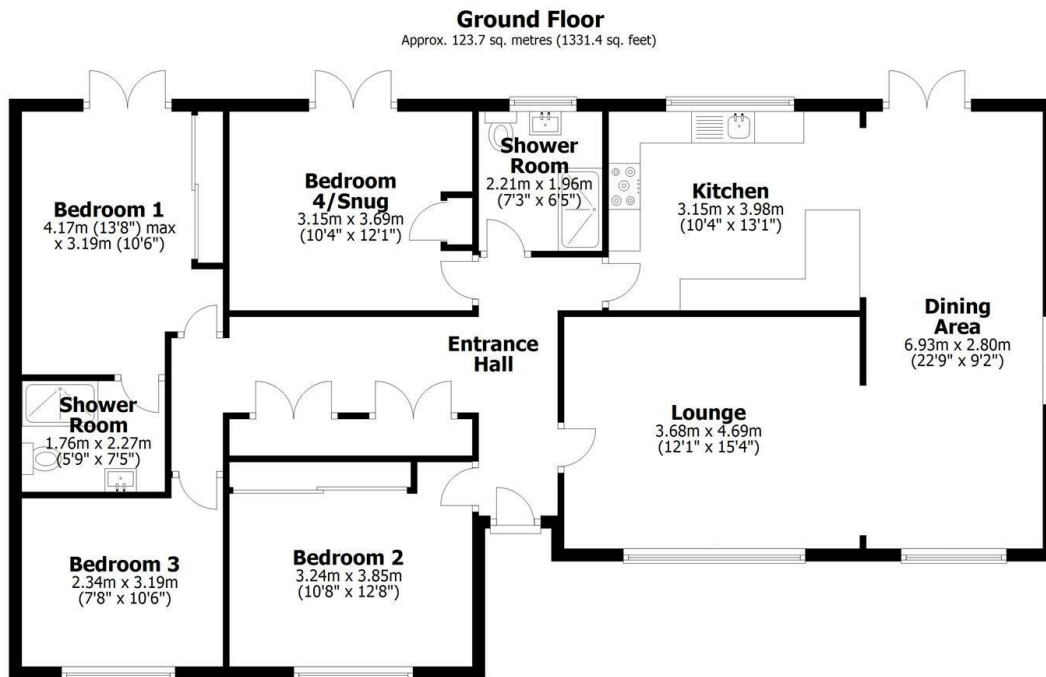
the agent



6 Fen Road, Heighington, LN4 1JL

Asking Price £310,000

- Detached 4 Bedroom Bungalow
- Low Maintenance Garden
- Well presented throughout
- EPC Rating C - Council Tax Band C
- Central village location
- Off Road Parking suitable for a Caravan
- Wood Burning Fire
- Open Plan Kitchen/Living Area
- Ensuite to Master Bedroom
- Close to shops and amenities



Total area: approx. 123.7 sq. metres (1331.4 sq. feet)

This plan is for layout guidance only. Not drawn to scale unless stated. Windows and door openings are approximate. Whilst every care is taken in the preparation of this plan, please check all dimensions, shapes and compass bearings before making any decisions reliant upon them. All interested parties must verify their accuracy independently.
Plan produced using PlanUp.



Directions

Viewings

Viewings by arrangement only. Call 01522 396059 to make an appointment.

Council Tax Band

C

EPC Rating:

C

Energy Efficiency Rating		
	Current	Potential
<i>Very energy efficient - lower running costs</i>		
(92 plus) A		
(81-91) B		80
(69-80) C	69	
(55-68) D		
(39-54) E		
(21-38) F		
(1-20) G		
<i>Not energy efficient - higher running costs</i>		
England & Wales	EU Directive 2002/91/EC	