



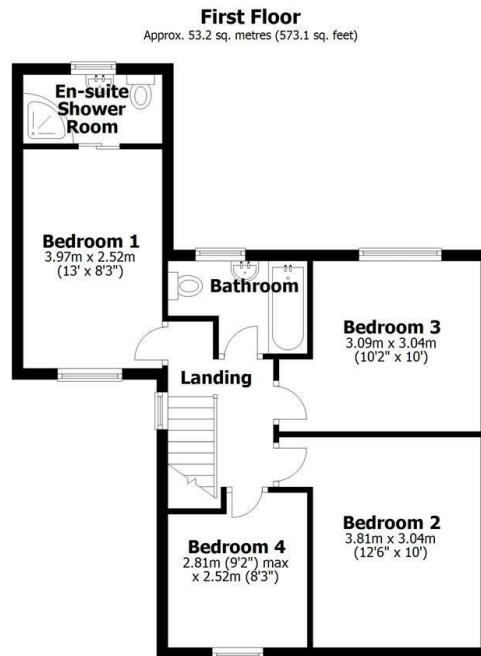
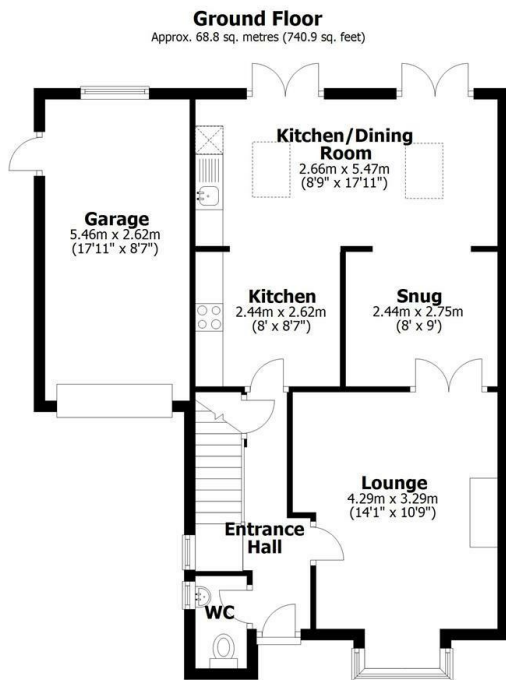
the agent



19 Keepers Close, Welton, LN2 3TS

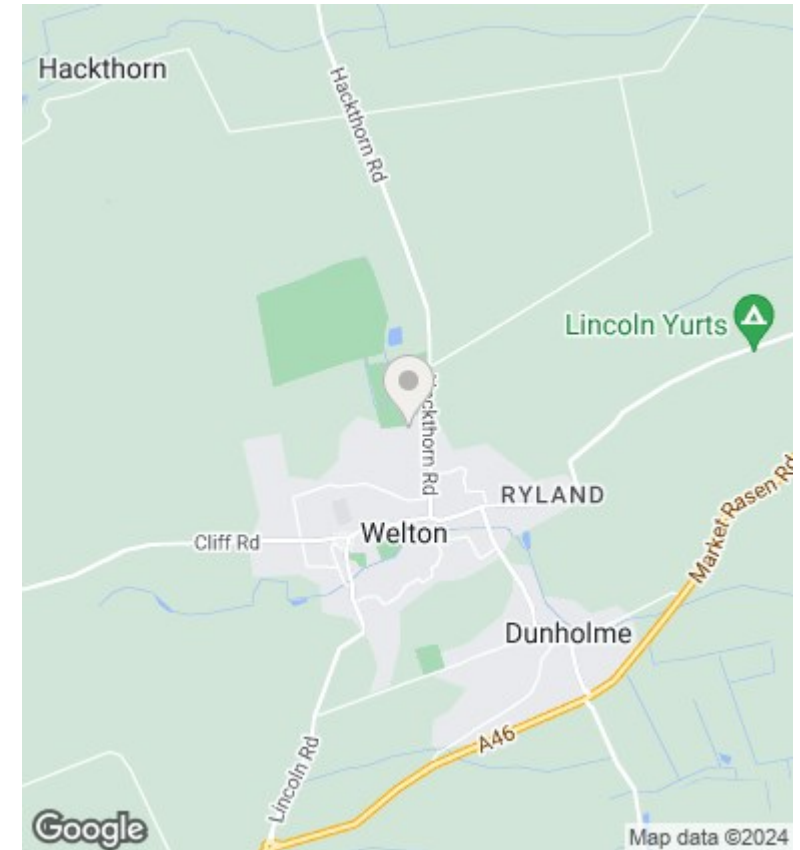
Asking Price £310,000

- Four Bedroom Detached House
- Lounge with Woodburning Stove
- Downstairs WC
- EPC Rating C
- Large Open Plan Living Area
- Ensuite Shower Room to Master Bedroom
- Single Garage
- Kitchen with Large Dining Area
- Family Bathroom
- Non Overlooked Garden



Total area: approx. 122.1 sq. metres (1314.0 sq. feet)

This plan is for layout guidance only. Not drawn to scale unless stated. Windows and door openings are approximate. Whilst every care is taken in the preparation of this plan, please check all dimensions, shapes and compass bearings before making any decisions reliant upon them. All interested parties must verify their accuracy independently.
Plan produced using PlanUp.



Directions

Viewings

Viewings by arrangement only. Call 03330904071 to make an appointment.

Council Tax Band

B

EPC Rating:

C

| Energy Efficiency Rating | | |
|--|-------------------------|-----------|
| | Current | Potential |
| <i>Very energy efficient - lower running costs</i> | | |
| (92 plus) A | | |
| (81-91) B | | 81 |
| (69-80) C | 69 | |
| (55-68) D | | |
| (39-54) E | | |
| (21-38) F | | |
| (1-20) G | | |
| <i>Not energy efficient - higher running costs</i> | | |
| England & Wales | EU Directive 2002/91/EC | |