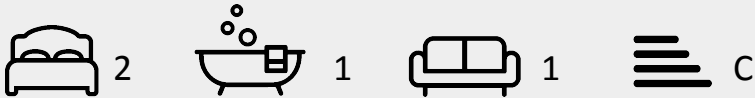




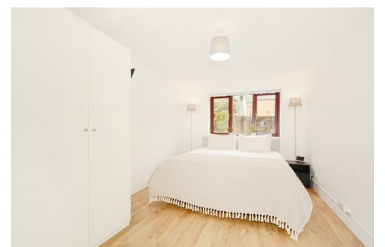
NATHAN K  
REAL ESTATE  
#NO1PROPERTYFINDER



Flat 24, 3, Wentworth Dwellings New Goulston Street,  
Guide price £630,000



A beautifully presented two bedroom apartment ideally situated in the heart of London's Financial District. Accommodation comprises; two double bedrooms, modern fully fitted kitchen, bathroom with walk in shower and underfloor heating, large south west facing living room which leads directly onto a private roof terrace. Liverpool Street is a stroll away as are the vibrant markets of Spitalfields and Brick Lane as well as a plethora of restaurants, cafés and bars.



- City Views
- Two Bedrooms
- Chain Free
- Great Location
- Private South West Facing Terrace
- 750 SQFT