

FLOOR PLAN

DIMENSIONS

**Porch**  
2'11 x 4'09 (0.89m x 1.45m)

**Lounge**  
14'02 x 14' (4.32m x 4.27m)

**Dining Kitchen**  
8'07 x 14' (2.62m x 4.27m)

**Conservatory**  
7'08 x 7'01 (2.34m x 2.16m)

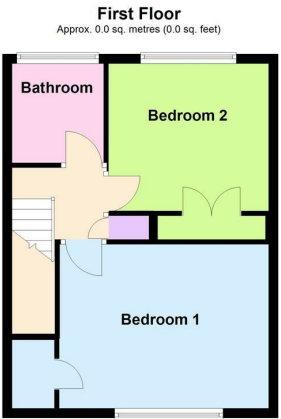
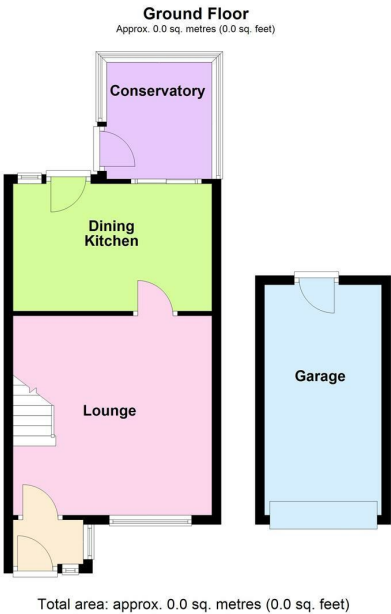
**Landing**

**Bedroom One**  
11' x 10'07 (3.35m x 3.23m)

**Bedroom Two**  
9'04 x 7'09 (2.84m x 2.36m)

**Bathroom**  
6'06 x 5'09 (1.98m x 1.75m)

**Garage**  
16'01 x 8'03 (4.90m x 2.51m)



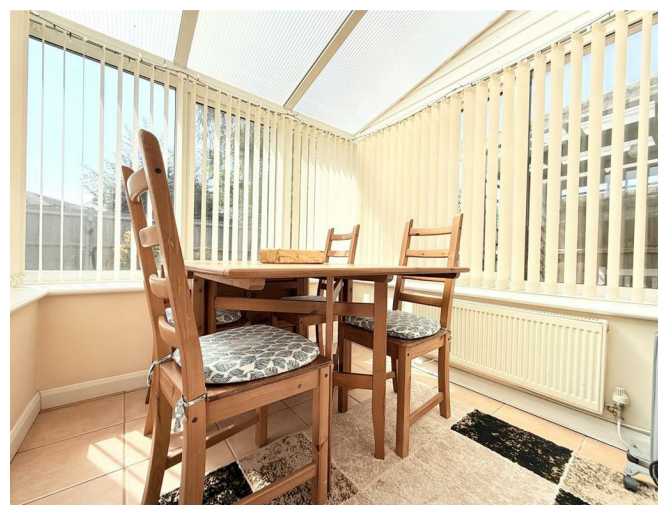
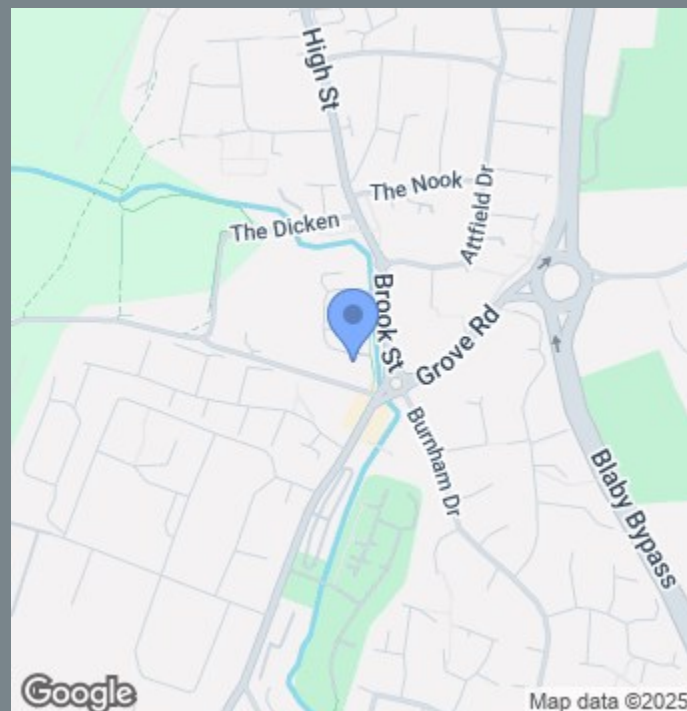


## OVERVIEW

- Lovely Home In Fabulous Location
- Ideal First Time Buy
- Porch & Lounge
- Dining Kitchen & Conservatory
- Two Double Bedrooms
- Family Bathroom
- Landscaped Garden
- Driveway & Detached Garage
- Viewing Is Advised
- EER - C, Freehold, Tax Band - B

## LOCATION LOCATION....

Tucked away in the heart of Whetstone, Bridgewater Close offers that rare blend of village charm and city convenience. Morning walks can begin in leafy Warwick Road Park, where the sound of a cricket match drifts through the air in summer and children's laughter carries from the playground. The High Street hums with friendly cafés, independent shops, and cosy pubs perfect for a weekend lunch. Life here moves at a gentler pace, yet everything you need is close at hand — from well-regarded schools to active community clubs and welcoming social events. When the city calls, regular buses, nearby train stations, and swift access to the M1 make Leicester and beyond effortlessly reachable.



## THE INSIDE STORY

*Tucked away at the end of a peaceful cul-de-sac, this charming end townhouse is the perfect choice for a first-time buyer or savvy investor. Step inside through the welcoming porch into a bright, inviting lounge, where a large picture window frames the outside world & a feature fireplace adds warmth & character. The elegant dining kitchen, with its shaker-style cabinets, contrasting work surfaces & breakfast bar for casual mornings, flows effortlessly through patio doors into the sunlit conservatory—a tranquil spot to relax, dine or simply watch the garden change with the seasons. Upstairs, two spacious double bedrooms, each with built-in storage, promise restful nights, while the fresh white bathroom brings a touch of everyday luxury. Outside, the beautifully landscaped garden is a private haven, with lush lawn, colourful borders, a sunny patio & an undercover seating area for all-weather entertaining. With a driveway & detached garage completing the picture, this charming home invites you to settle in, make memories & enjoy a life of ease.*

