

## 30 Bloomfield Drive, Wynyard

Guide Price £350,000

🛏 4 🚿 2 🛋 1



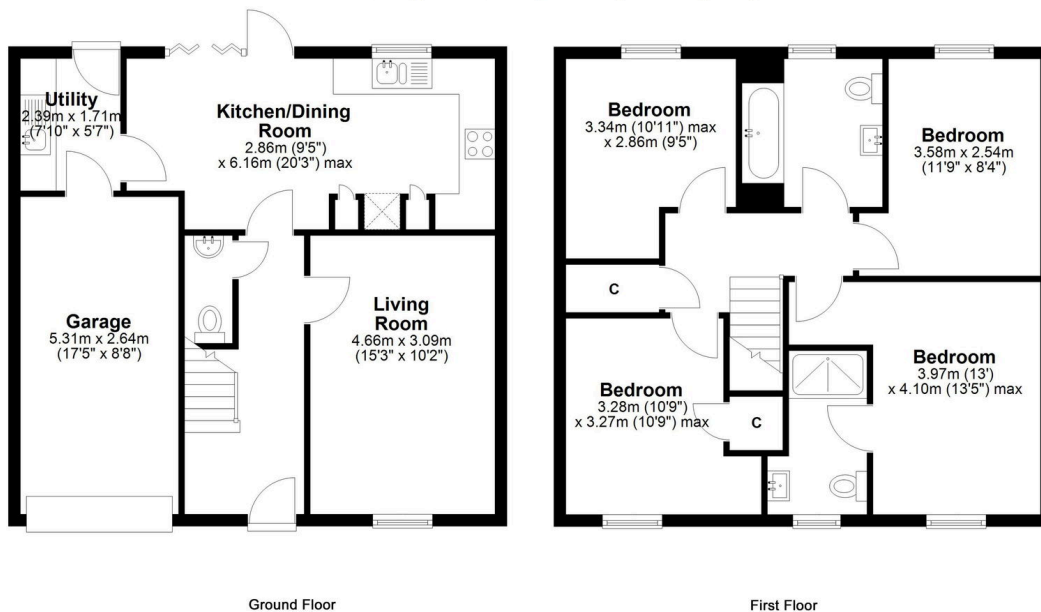
**The Yorkshire Property Agency** is delighted to introduce this fabulous four-bedroom detached family home located in the heart of the popular Wynyard garden village. Boasting a stylish modern interior and priced competitively, we would highly recommend view this property soon.

## Key Features

- Stylish detached family-home
- Two bathrooms
- Off-street parking
- Integral garage
- Located in the heart of the popular Wynyard garden village
- Four bedrooms
- South-facing garden
- Excellent energy-efficiency
- Council tax band G
- Close to local amenities

### 30 Bloomfield Drive Wynyard

Total area: approx. 120.6 sq. metres (1297.7 sq. feet)



Whilst every attempt has been made to ensure the accuracy of the floorplans contained here, measurements of doors, windows, rooms and any other items are approximate and no responsibility is taken for any error, omission or mis-statement. This plan is not drawn to scale and is for illustrative purposes only & should be used as such by any prospective purchaser. Created especially for by Vue3sixty Ltd