




School Cottage, Main Street, Shipton By Beningbrough

£350,000

 3  2  2

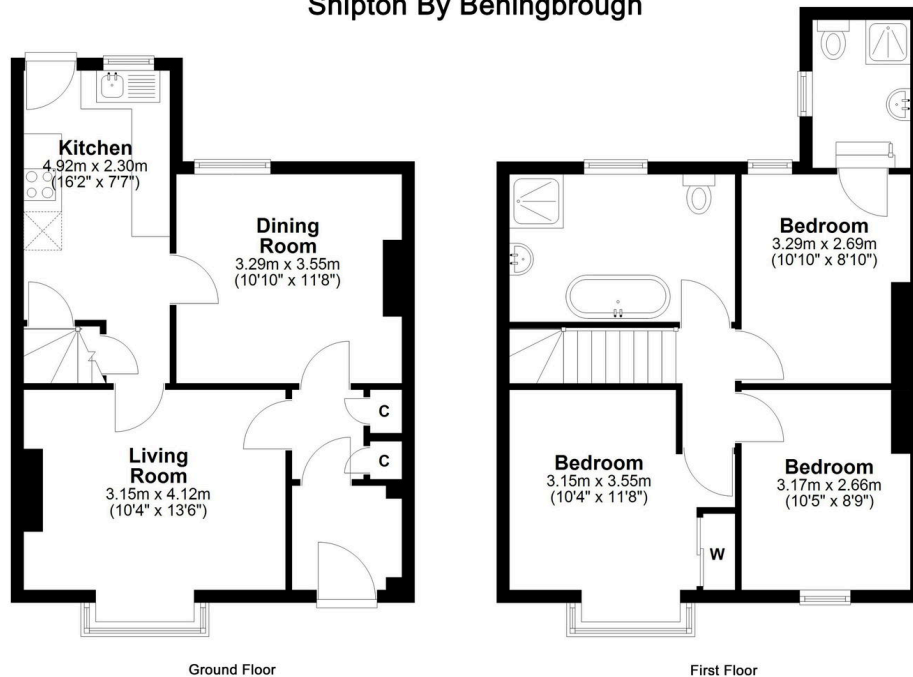


The Yorkshire Property Agency are delighted to introduce this charming three-bedroom cottage located in the heart of the popular North Yorkshire village of Shipton By Beningbrough. Benefitting from attractive original features and secure off-street parking, this property would make a fantastic home or a North Yorkshire pied-à-terre.

Key Features

- Three-bedroom cottage
- Popular village location
- Original features
- Charming interior
- Off-street parking
- Low maintenance garden
- Regular bus routes to York
- Blend of rural tranquillity and urban convenience
- Wood-burning stove
- Council tax band C

School Cottage Shipton By Beningbrough



Whilst every attempt has been made to ensure the accuracy of the floorplans contained here, measurements of doors, windows, rooms and any other items are approximate and no responsibility is taken for any error, omission or mis-statement. This plan is not drawn to scale and is for illustrative purposes only & should be used as such by any prospective purchaser. Created especially for by Vue3sixty Ltd