




2, Afton Hall School Lane, Great Ayton

£300,000

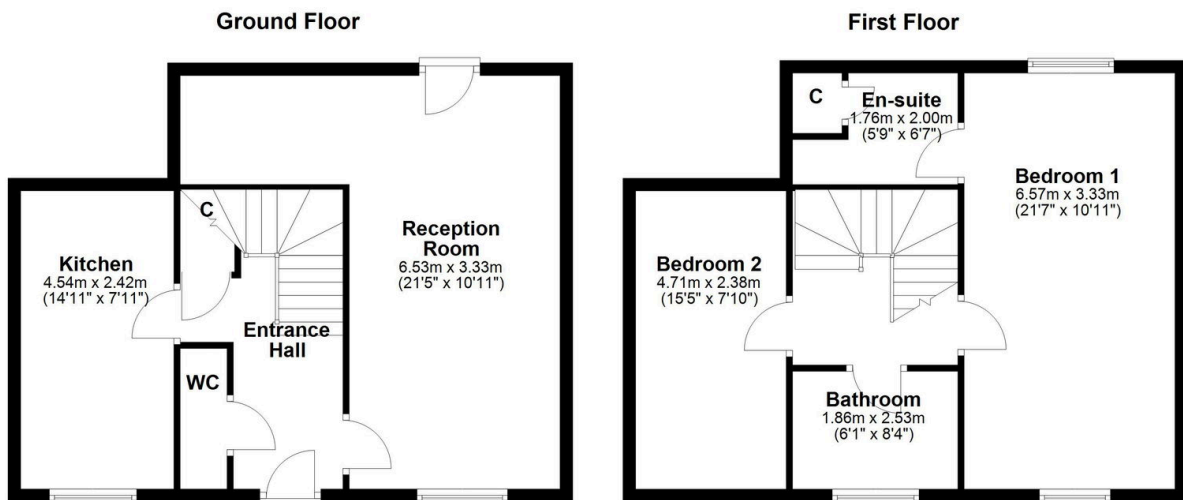
 2  2  1



The Yorkshire Property Agency are delighted to introduce this fabulous Grade II listed two-bedroom townhouse located within an attractive school-conversion development in the popular North Yorkshire village of Great Ayton. Benefitting from a stunning location, this fantastic property would make an ideal downsize or North Yorkshire pied-à-terre

Key Features

- Fabulous Grade II listed property
- Two bathroom
- Beautiful school conversion
- Charming original features
- Council tax band E
- Two bedrooms
- Long lease of 999 yrs from 1999
- Vaulted ceilings
- Amazing communal grounds with tennis court and river
- Prime Great Ayton location



This floorplan is for illustrative purposes only and is not 100% to scale. Measurements of Rooms, Windows, Doors and any other items are an approximation and no responsibility is taken for any error, misstatement or omission. Items such as bathroom suites, or kitchens are representatives only any may not look like the real item. Made by Daniel Kitching Photography