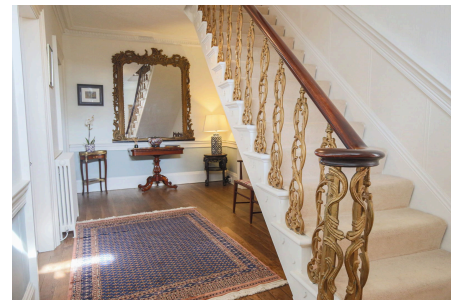


Beech Grove, 69, High Street, Great Ayton

£950,000

🛏 5 🍳 3 🛋 2



The Yorkshire Property Agency is delighted to introduce this fabulous, detached Georgian Grade II listed family home, occupying an impressive site within delightful gardens in the popular North Yorkshire village of Great Ayton. Benefitting from a chain-free sale and boasting a plethora of character period features, this wonderful property is presented in fabulous fashion and represents a rarity on the market.

Key Features

- Detached Grade II Listed family home
- Four bathrooms
- Stunning period features throughout
- Council tax band G
- Close to all the local amenities
- Five bedrooms
- Four reception rooms
- Substantial plot in the heart of the village
- Chain-free sale
- Overlooking the River Leven and with views towards the Cleveland Hills beyond

Beech Grove, 69 High Street, Great Ayton, TS9 6NF



This floorplan is for illustrative purposes only and is not 100% to scale. Measurements of Rooms, Windows, Doors and any other items are an approximate and no responsibility is taken for any error, misstatement or omission. Items such as bathroom suites, or kitchens are representatives only any may not look like the real item. Made by Daniel Kitching Photography