

## Pondell, The Green, Low Worsall

Guide Price £675,000

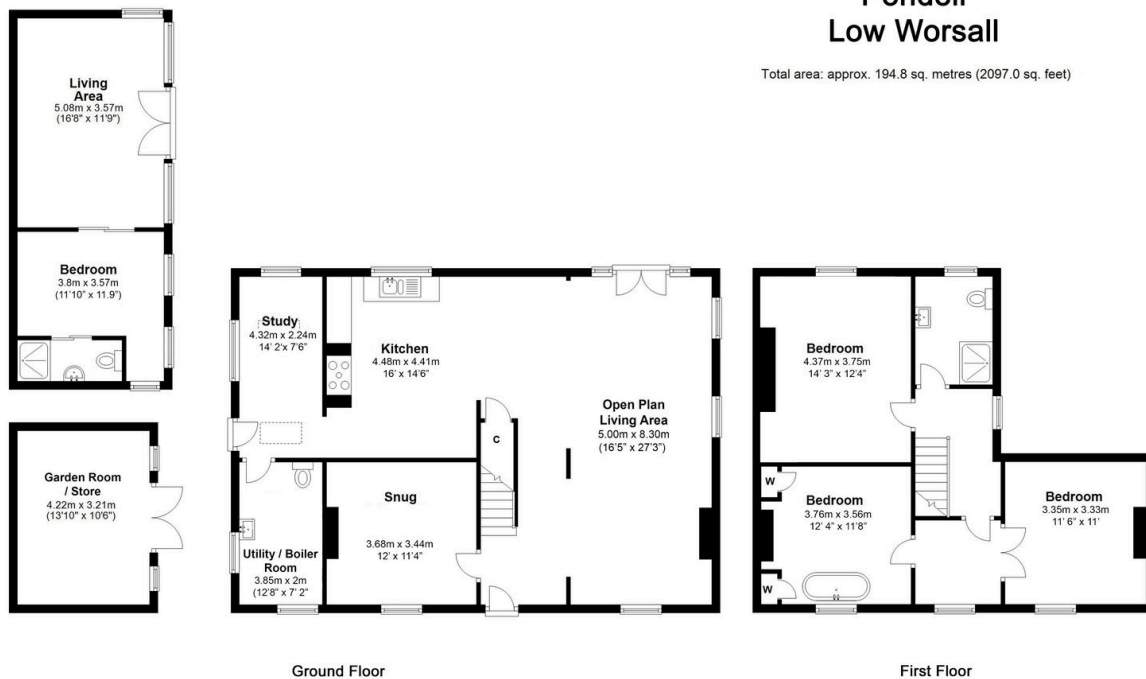
🛏 4 🚿 2 🛋 3



**The Yorkshire Property Agency** is delighted to introduce this fabulous 18th Century, four-bedroom family home located in the attractive North Yorkshire village of Low Worsall. One of the original houses on the green, Pondell benefits from attractive and unique views across the green in addition to planning permission to create a substantial six / seven bedroom family home.

## Key Features

- Fabulous 18th Century family home
- Prime village location
- Potential for multigenerational living
- Stunning facade
- A short drive to the amenities of Northallerton and Yarm
- Four bedrooms with PP to increase to seven bedrooms
- Attractive and unique views across the green
- South-facing rear garden
- Under-floor heating downstairs and cast-iron radiators upstairs
- Council tax band D



Whilst every attempt has been made to ensure the accuracy of the floorplans contained here, measurements of doors, windows, rooms and any other items are approximate and no responsibility is taken for any error, omission or mis-statement. This plan is not drawn to scale and is for illustrative purposes only & should be used as such by any prospective purchaser.