

Southfields, Appleton Wiske

Guide Price £1,150,000

🛏 5 🚗 3 🚗 3



The Yorkshire Property Agency are delighted to introduce this stunning five-bedroom family home located on the periphery of the popular North Yorkshire village of Appleton Wiske. This beautiful smallholding benefits from a high quality finish and is situated in approximately 3.5 acres.

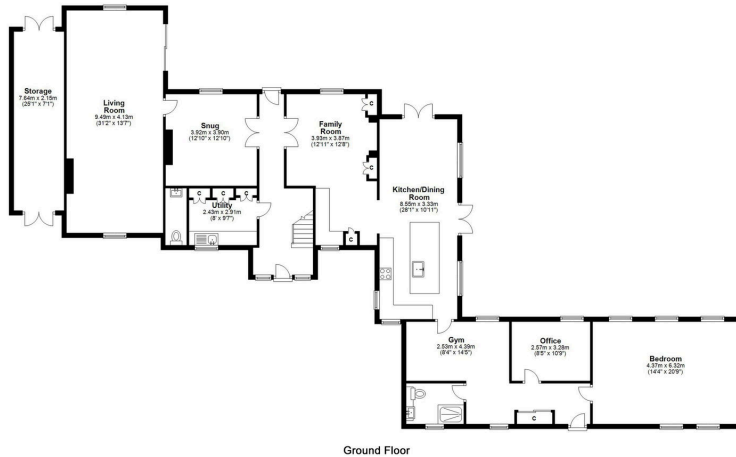
Key Features

- Stunning five-bedroom family home
- Beautiful smallholding of approx. 3.5 acres
- Flexible accommodation
- Three reception rooms
- Paddock and field
- Potential for multi-generational living
- Finished to an exacting standard
- Council tax band G
- Landscaped south-facing gardens
- Close to Northallerton and Yarm's amenities



Southfield Farm Appleton Wiske

Total area: approx. 291.6 sq. metres (3138.6 sq. feet)



Whilst every attempt has been made to ensure the accuracy of the floorplans contained here, measurements of doors, windows, rooms and any other items are approximate and no responsibility is taken for any error, omission or mis-statement. This plan is not drawn to scale and is for illustrative purposes only & should be used as such by any prospective purchaser. Created especially for by Vue3sixty Ltd.