

5 Levendale, Hutton Rudby

Offers Over £400,000

🛏 5 🚿 2 🛋 2



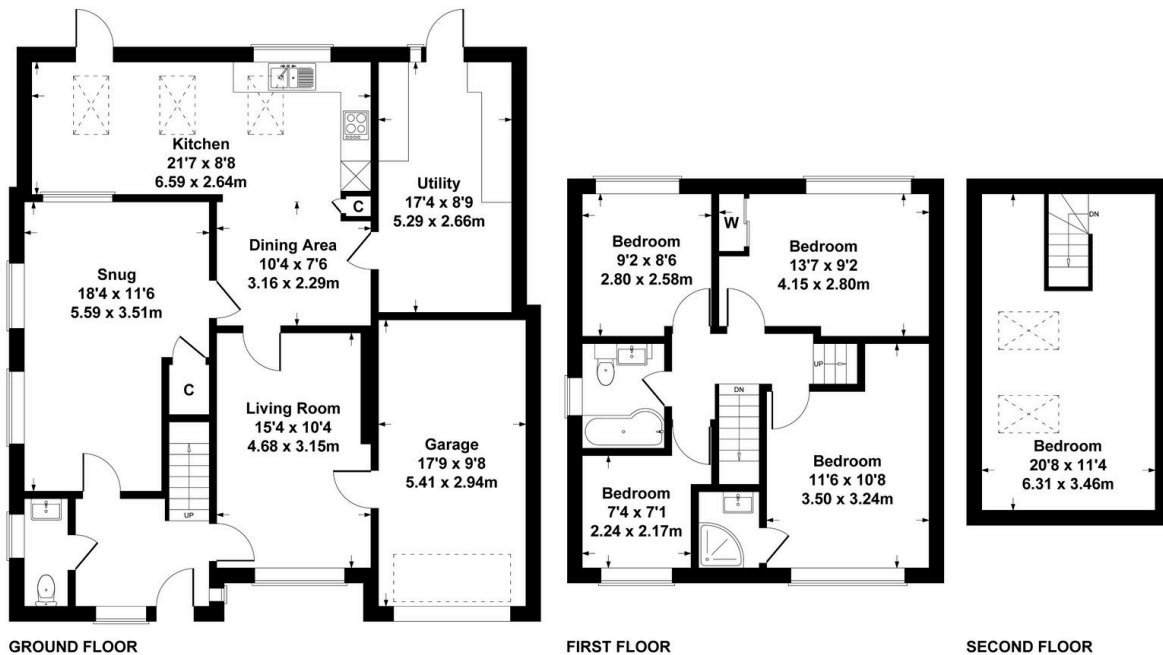
The Yorkshire Property Agency are delighted to introduce this fantastic five-bedroom detached family-home situated on an attractive street in the ever-popular village of Hutton Rudby. Benefitting from a charming finish throughout, this property has also been extended dramatically and boasts huge potential to extend further (STPP).

Key Features

- Five-bedroom detached family home
- Potential to extend further (STPP)
- Contemporary kitchen and bathrooms
- Off-street parking for multiple cars
- Council tax band E
- Extended dramatically
- Charming finish throughout
- West-facing garden
- Integrated garage
- What 3 Words: /// thousands.police.jacuzzi

5 Levenside, Hutton Rudby

Approximate gross internal area
178 sq m - 1916 sq ft



SKETCH PLAN FOR ILLUSTRATIVE PURPOSES ONLY

All measurements walls, doors, windows, fittings and appliances, their sizes and locations, are approximate only. They cannot be regarded as being a representation by the seller, nor their agent.

Produced by Potterplans Ltd. 2024