




20 Moor Park, Nunthorpe

Offers Over £300,000

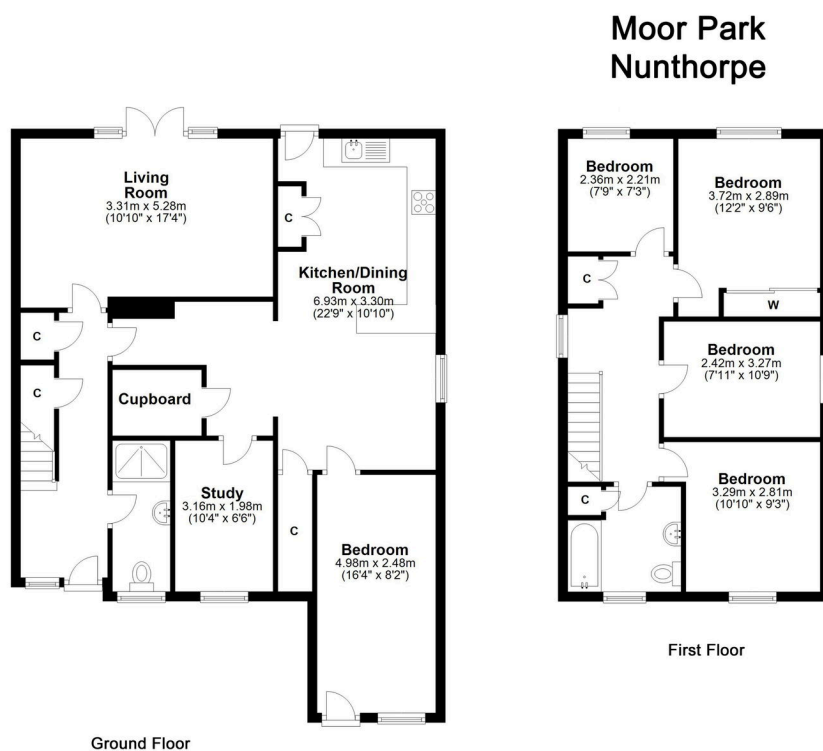
 4  2  2



The Yorkshire Property Agency are delighted to introduce this fantastic four / five bedroom detached family home located on a popular estate in Nunthorpe, TS7. Offering flexible accommodation, a chain-free sale and priced for a quick transaction, this property is unlikely to be on the market for long.

Key Features

- Fantastic four / five bedroom detached family home
- A chain-free sale
- Contemporary finish throughout
- Popular location and estate in TS7
- Council tax band D
- Offering flexible accommodation
- Priced for a quick transaction
- Detached garage and off-street parking
- Proximity to local schools
- Proximity to the local amenities and transport links



Whilst every attempt has been made to ensure the accuracy of the floorplans contained here, measurements of doors, windows, rooms and any other items are approximate and no responsibility is taken for any error, omission or mis-statement. This plan is not drawn to scale and is for illustrative purposes only & should be used as such by any prospective purchaser.
Created by Vue3sixty Ltd