

Beechcroft, Pickhill

Guide Price £785,000

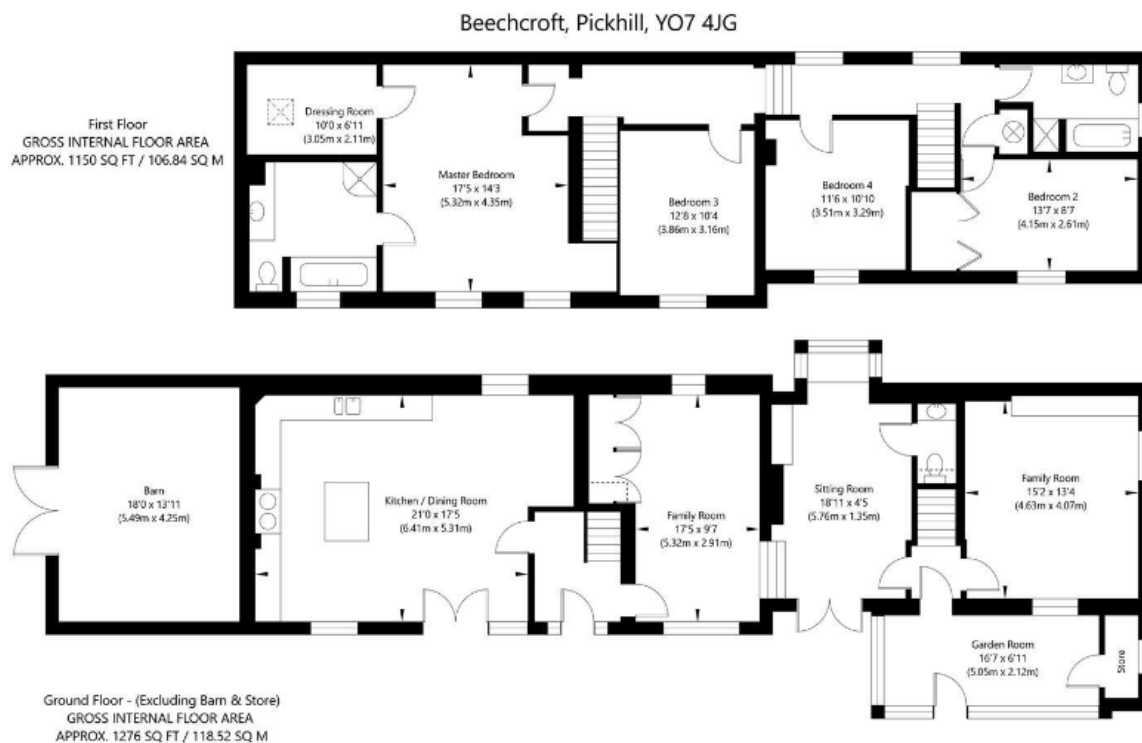
🛏 4 🚿 2 🛋 4



The Yorkshire Property Agency are delighted to introduce this fabulous four-bedroom family home situated in the ever-popular village of Pickhill, nr Thirsk. Benefitting from a substantial plot with mature south-facing gardens, this fantastic property also boasts an attractive finish throughout, superb lateral space and potential to further extend (STPP).

Key Features

- Fabulous detached family home
- Substantial south facing gardens
- Range of out-buildings
- Council tax band F
- Proximity to Thirsk's local amenities
- Four bedrooms & two bathrooms
- Excellent lateral space
- Charming finish throughout
- Excellent commuter villages
- Potential to extend (STPP)



NOT TO SCALE - FOR ILLUSTRATIVE PURPOSES ONLY
APPROXIMATE GROSS INTERNAL FLOOR AREA 2426 SQ FT / 225.36 SQ M - (Excluding Barn & Store)
All measurements and fixtures including doors and windows are approximate and should be independently verified.
www.exposurepropertymarketing.com © 2022

