

## 50 Apsley Way, Ingleby Barwick

£385,000

🛏️ 6 🚗 3 🛋️ 3

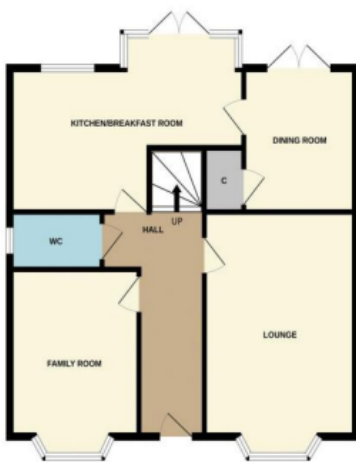


The Yorkshire Property Agency are delighted to introduce this fabulous and substantial double-fronted, six-bedroom family home located on a popular street in arguably Teesside's most popular estate. This fantastic property offers spacious accommodation over three levels and boasts a contemporary and high-spec finish throughout.

## Key Features

- Six-bedroom family home
- Stunning interior throughout
- Bespoke contemporary kitchen
- Off-street parking for multiple cars
- Landscaped low-maintenance garden
- Double-garage
- Council tax band F
- located in the popular 'Rings' area of Ingleby Barwick
- Double-fronted and double-glazed
- Bespoke 'hot-tub house and garden bar'; ideal for al-fresco entertaining

GROUND FLOOR



1ST FLOOR



2ND FLOOR



Whilst every attempt has been made to ensure the accuracy of the floorplan contained here, measurements of doors, windows, rooms and any other items are approximate and no responsibility is taken for any error, omission or mis-statement. This plan is for illustrative purposes only and should be used as such by any prospective purchaser. The services, systems and appliances shown have not been tested and no guarantee as to their operability or efficiency can be given.  
Made with Metroplan ©2024