

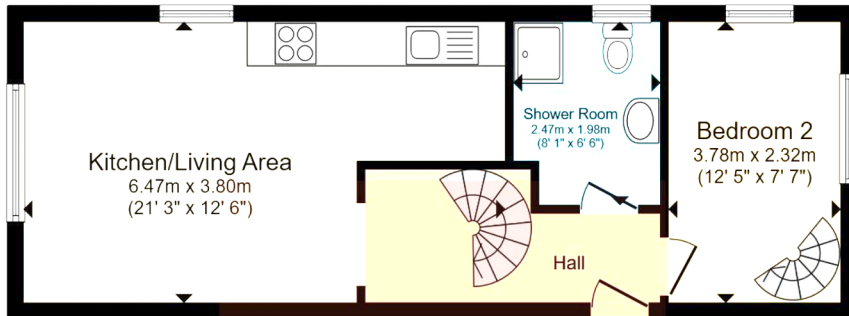
## Apartment 8, De Mowbray House, 180, Front Street, Sowerby

£170,000

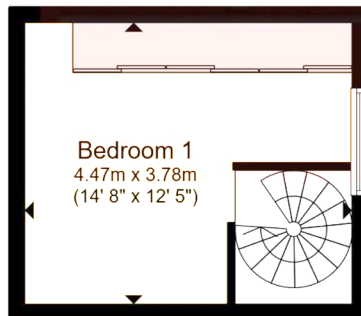
🛏️ 2 🚿 1 🚗 1



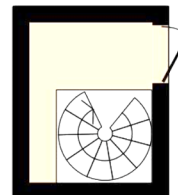
- One / Two bedroom maisonette
- Benefitting from its own front door
- Stunning stucco-fronted Georgian conversion
- Attractive communal gardens
- Private allocated parking space
- Long lease (details below)
- Great location within the popular North Yorkshire village of Sowerby
- Excellent commuting potential with a short distance to travel to A19 arterial route
- Modern and stylish finish throughout
- Double-glazed windows throughout



**Ground Floor**



**First Floor**



The Yorkshire Property Agency are delighted to introduce this fabulous one / two bedroom maisonette located in a stunning Georgian conversion in the popular North Yorkshire village of Sowerby. Benefitting from its own front door, this split level property would make an ideal first-time buy or investment.