

BRUNTON

RESIDENTIAL



SHAW HOUSE COTTAGES, NEWTON, STOCKSFIELD, NE43

£199,500

BRUNTON

RESIDENTIAL





BRUNTON

RESIDENTIAL



BRUNTON

RESIDENTIAL



TWO BEDROOMS – END TERRACED – NO CHAIN

Brunton Residential are delighted to offer for sale Shaw House Cottage, a beautifully restored, stone-built two-bedroom end-terrace cottage, positioned on the outskirts of the sought-after rural village of Newton. Just a short drive from Corbridge and ideally located for easy access to Newcastle, Carlisle, and the surrounding countryside, this charming home has been renovated to an exceptional standard, offering a bright, spacious, and thoughtfully designed interior that blends character with contemporary style.

BRUNTON

RESIDENTIAL



BRUNTON

RESIDENTIAL

Upon entering the property, you're welcomed into a hallway with wood-effect flooring that runs throughout. There's a convenient space for coats and a large storage cupboard located beneath the stairs.

To the left, you step into a stylish open-plan kitchen and lounge. The contemporary kitchen is well-equipped with a range of high-quality base and wall units, integrated appliances including a Hotpoint oven, induction hob, dishwasher, and extractor fan, as well as a breakfast bar. Contrasting worktops add a modern touch of style.

The lounge area features a charming inglenook fireplace with a wood-burning stove set on a stone-flag hearth. A door from the lounge leads to a rear hallway, where stairs rise to the first-floor landing.

Upstairs, the first floor offers two generously sized double bedrooms and a modern bathroom, complete with a bath, walk-in shower, washbasin, WC, and a heated towel rail.

Externally, the property benefits from ample parking for multiple vehicles within a large courtyard. There's also an external store room, a utility room, and a stone outbuilding for additional storage. A shared lawned garden is enjoyed in common with the adjoining cottages—this could be fenced off by a potential buyer if desired.



BRUNTON

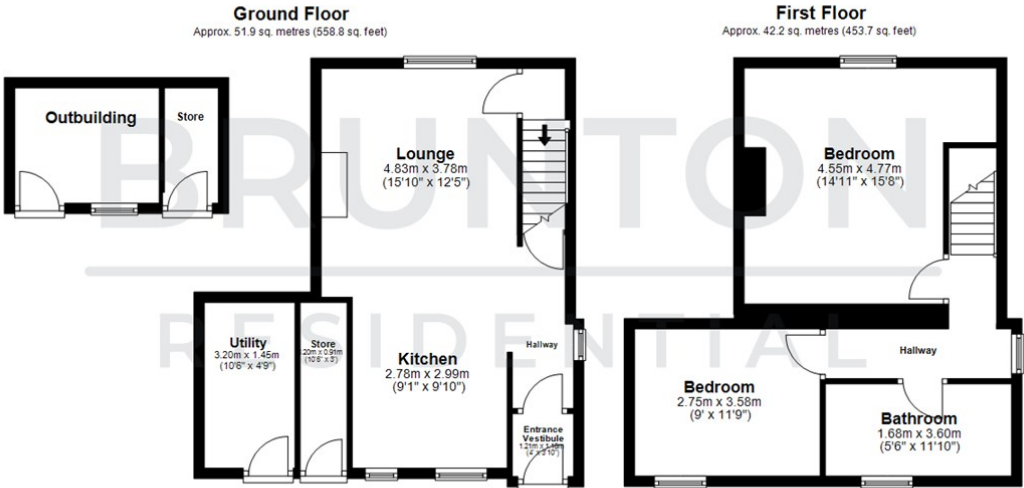
RESIDENTIAL

TENURE : Freehold

LOCAL AUTHORITY : Northumberland
County Council

COUNCIL TAX BAND : B

EPC RATING : D



All measurements are approximate and are for illustration only.
Plan produced using PlanUp.

