

# BRUNTON

---

## RESIDENTIAL



**SHAW HOUSE COTTAGES, NEWTON, STOCKSFIELD, NE43**

**£265,000**



# BRUNTON

---

## RESIDENTIAL







# BRUNTON

---

## RESIDENTIAL



# BRUNTON

---

## RESIDENTIAL



NO CHAIN | THREE GOOD SIZED BEDROOMS | STONE BUILT TERRACE

Brunton Residential are delighted to offer for sale Shaw House Cottage, a beautifully restored, stone-built three-bedroom terraced cottage, positioned on the outskirts of the sought-after rural village of Newton. Just a short drive from Corbridge and ideally located for easy access to Newcastle, Carlisle, and the surrounding countryside, this charming home has been renovated to an exceptional standard, offering a bright, spacious, and thoughtfully designed interior that blends character with contemporary style.



# BRUNTON

---

## RESIDENTIAL



# BRUNTON

---

## RESIDENTIAL

Upon entering the property, you are welcomed into a hallway with wood flooring.

To the right-hand side, there is access to a WC/utility room, offering practical convenience. To the left, you enter an contemporary open-plan kitchen/lounge. The kitchen is well-equipped with a range of high quality base and wall units, integrated appliances including an Cooke and Lewis oven, hob, and extractor fan, fridge and dishwasher, as well as a breakfast bar.

The lounge features a wood-burning stove, and a door leading through to a rear hallway. From here, stairs lead to the first-floor landing, and there is access to a good-sized sitting room, offering additional living space.

Upstairs, the first floor comprises three good-sized double bedrooms and a modern bathroom fitted with a bath, walk-in shower, heated towel rail, washbasin, and WC.

Externally, the property benefits from ample parking for multiple vehicles within a large courtyard. There's also an external store room. A shared lawned garden is enjoyed in common with the adjoining cottages—this could be fenced off by a potential buyer if desired.





# BRUNTON

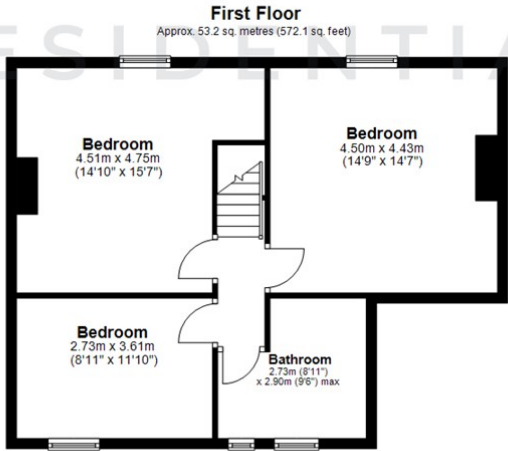
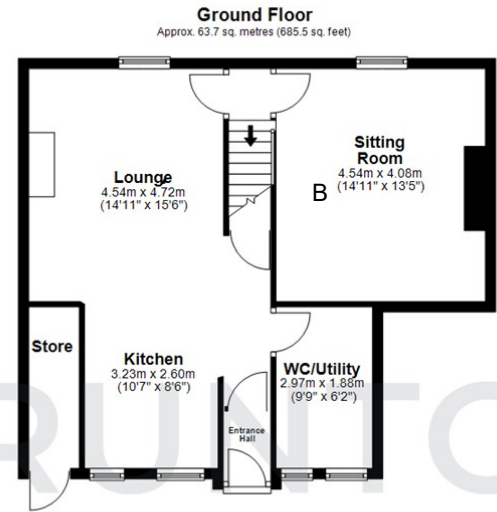
## RESIDENTIAL

TENURE : Freehold

LOCAL AUTHORITY : Northumberland  
County Council

COUNCIL TAX BAND : B

EPC RATING : D



All measurements are approximate and are for illustration only.  
Plan produced using PlanUp.

