

BRUNTON

RESIDENTIAL



BATTLE HILL, HEXHAM, NE46

Offers Over £145,000

BRUNTON

RESIDENTIAL





BRUNTON

RESIDENTIAL



BRUNTON

RESIDENTIAL

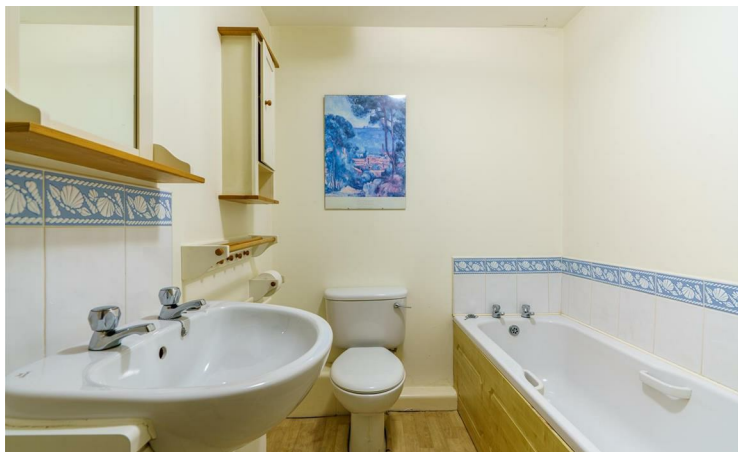


TWO BEDROOM APARTMENT - SOUGHT AFTER LOCATION - PARKING SPACE

Brunton Residential are delighted to offer this well-presented first floor two bedroom apartment in a popular position within the sought after area of Hexham. This first floor property offers convenient access to the town centre, schools and transport links.

BRUNTON

RESIDENTIAL



BRUNTON

RESIDENTIAL

Upon entering the property, you are greeted by an inviting inner hallway that provides access to two generously sized bedrooms. The principal bedroom boasts an en-suite shower room and fitted wardrobes, while the second bedroom also benefits from built-in storage.

The hallway leads into a spacious lounge/diner featuring a charming fireplace and double doors that open onto a Juliet balcony, allowing natural light to fill the room. From here, you can access the well-appointed kitchen, complete with integrated appliances including an oven and hob, a range of wall and base units, a stainless steel sink with mixer tap, and wood-effect flooring.

At the end of the hallway, you'll find a bathroom fitted with a bath, washbasin, WC, and a handy storage unit.

Outside, the property enjoys access to communal garden areas and includes the added convenience of a parking space.



BRUNTON

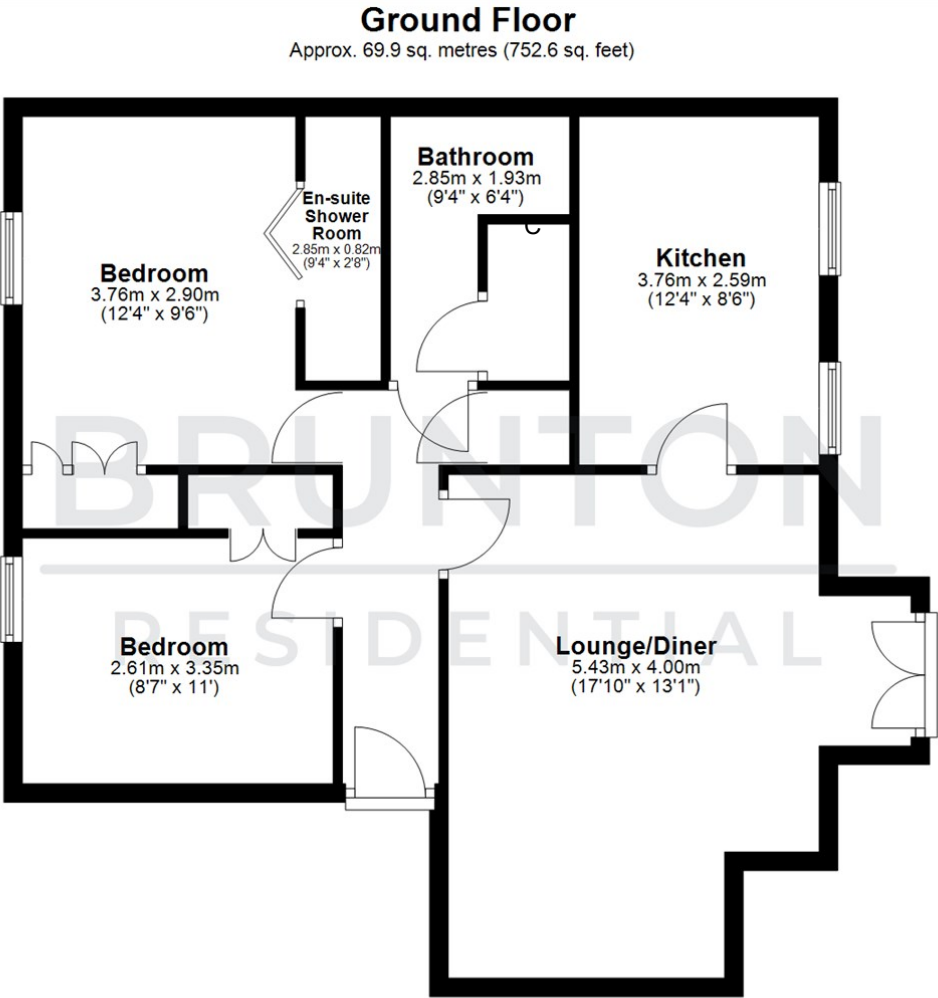
RESIDENTIAL

TENURE : Leasehold

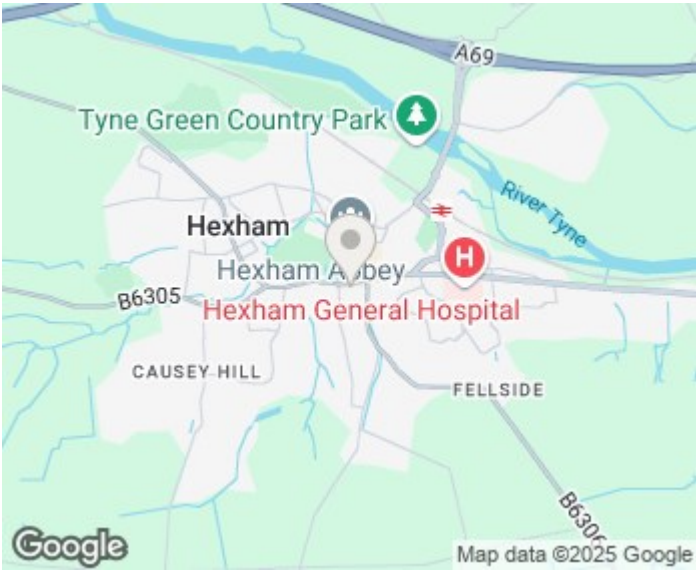
LOCAL AUTHORITY : Northumberland CC

COUNCIL TAX BAND : C

EPC RATING :



All measurements are approximate and are for illustration only.
Plan produced using PlanUp.



Energy Efficiency Rating		
	Current	Potential
Very energy efficient - lower running costs		
(92 plus) A		
(81-91) B		
(69-80) C		
(55-68) D		
(39-54) E		
(21-38) F		
(1-20) G		
Not energy efficient - higher running costs		
EU Directive 2002/91/EC		
England & Wales		

Environmental Impact (CO ₂) Rating		
	Current	Potential
Very environmentally friendly - lower CO ₂ emissions		
(92 plus) A		
(81-91) B		
(69-80) C		
(55-68) D		
(39-54) E		
(21-38) F		
(1-20) G		
Not environmentally friendly - higher CO ₂ emissions		
EU Directive 2002/91/EC		
England & Wales		