

BRUNTON

RESIDENTIAL



FRONT STREET, BELLINGHAM, HEXHAM

£270,000

BRUNTON

RESIDENTIAL





BRUNTON

RESIDENTIAL



BRUNTON

RESIDENTIAL



Unique Ground Floor Luxury Apartment Situated within Bellingham, A Large Open Plan Living Space, Well Appointed Kitchen, Three Double Bedrooms, Three En-suites and Large Rear Gardens.

The property is located within the former Barclays Bank building, retaining some of the original features including the vault door. The property is situated in the centre of Bellingham, with local shops nearby and just across the road from the Co-Op. Bellingham is on the edge of the Northumberland National Park, making it an ideal base for exploring nearby attractions such as Hadrian's Wall, Kielder's Dark Skies, the Borders, and everything the National Park has to offer.

The property has been refurbished to a very high specification and is offered in excellent order throughout.

BRUNTON

RESIDENTIAL

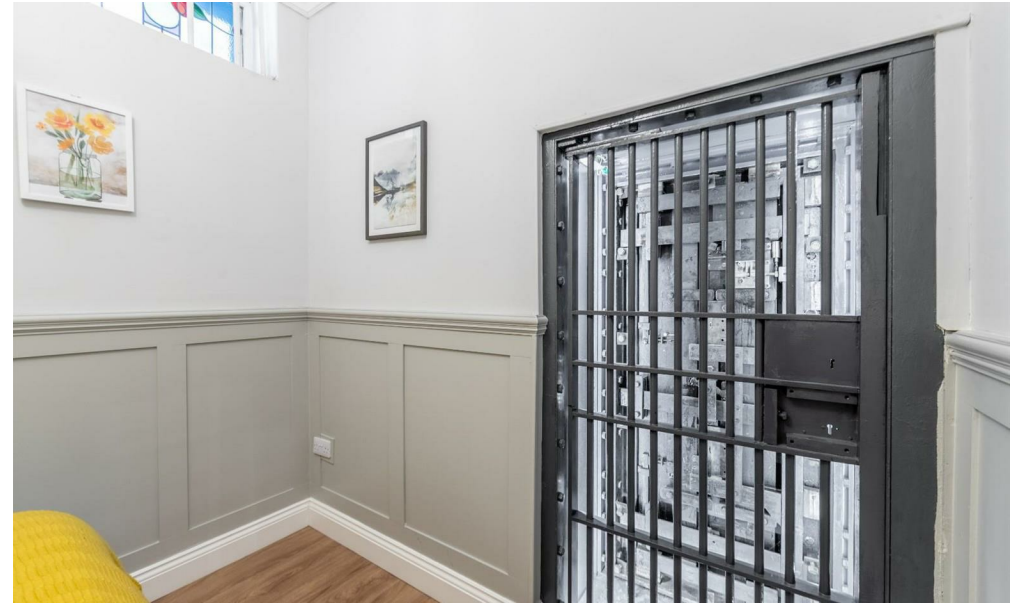


BRUNTON

RESIDENTIAL

The accommodation briefly comprises an entrance vestibule with original feature tiling, leading into a spacious living area with high ceilings, decorative cornices, parquet flooring, and a fireplace with a wood-burning stove, complemented by panelled walls. The kitchen features windows to the front aspect, including a small, charming window where the ATM once stood. It boasts high-quality fitted wall and base units, an enamel sink with a mixer tap, a breakfast bar, a corniced ceiling, and integrated appliances, including a dishwasher and hob, along with a freestanding oven. From the kitchen, you can access three double bedrooms, all of which have en-suite bathrooms. Two of the en-suites include ladder-style chrome radiators, shower cubicles, wash hand basins in vanity units, and low-level WCs. The third en-suite also features a panelled bath with a shower overhead. On the opposite side of the property, there's a convenient utility room and an additional WC.

To the rear, you'll find a large, lawned garden with stone boundaries, mainly laid to lawn with flower borders and fruit trees. There is also a raised decking sun terrace at the back of the garden.



BRUNTON

RESIDENTIAL

TENURE : Freehold

LOCAL AUTHORITY :

COUNCIL TAX BAND :

EPC RATING : E

