

BRUNTON

RESIDENTIAL



BURSWELL AVENUE, HEXHAM, NE46

£295,000

BRUNTON

RESIDENTIAL





BRUNTON

RESIDENTIAL



BRUNTON

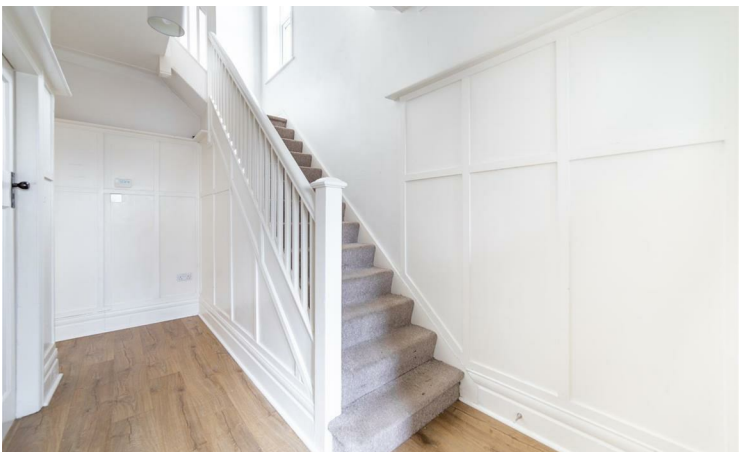
RESIDENTIAL



SOUGHT AFTER LOCATION - CLOSE TO LOCAL AMENITIES - NO ONWARD CHAIN
Nestled in the highly sought after West End of Hexham, Brunton Residential are delighted to present this three bed semi-detached home. The property is conveniently located close to local amenities including great access to popular schools and excellent access to the A69 and Hexham Railway Station for links to Newcastle, Carlisle and beyond.

BRUNTON

RESIDENTIAL



BRUNTON

RESIDENTIAL

The home briefly comprises of; entrance porch, with door leading through the hall. The lounge is situated to the front of the property with bay window and character features such as deep skirting boards and high ceilings complimented with feature fire place. The spacious kitchen / diner is located at the back of the home, the dining room has double doors out to the courtyard ample space for dining table and lounge area with again feature fire place, it leads seamlessly through to the kitchen, here shaker-style wall and base units and an overhead extractor fan, while a convenient side garden entrance adds practicality. A downstairs WC completes this level. Upstairs there are three good size bedrooms and a bathroom comprising of bath, shower cubicle, wc and wash hand basin. Externally, the property boasts a yard to the front and side along with a rear private courtyard and a garage. The property is offered with no forward chain.



BRUNTON

RESIDENTIAL

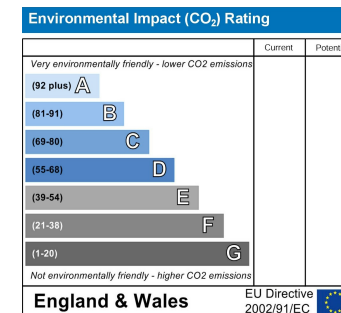
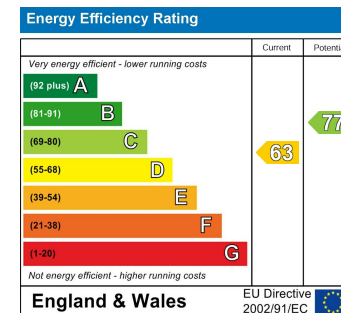
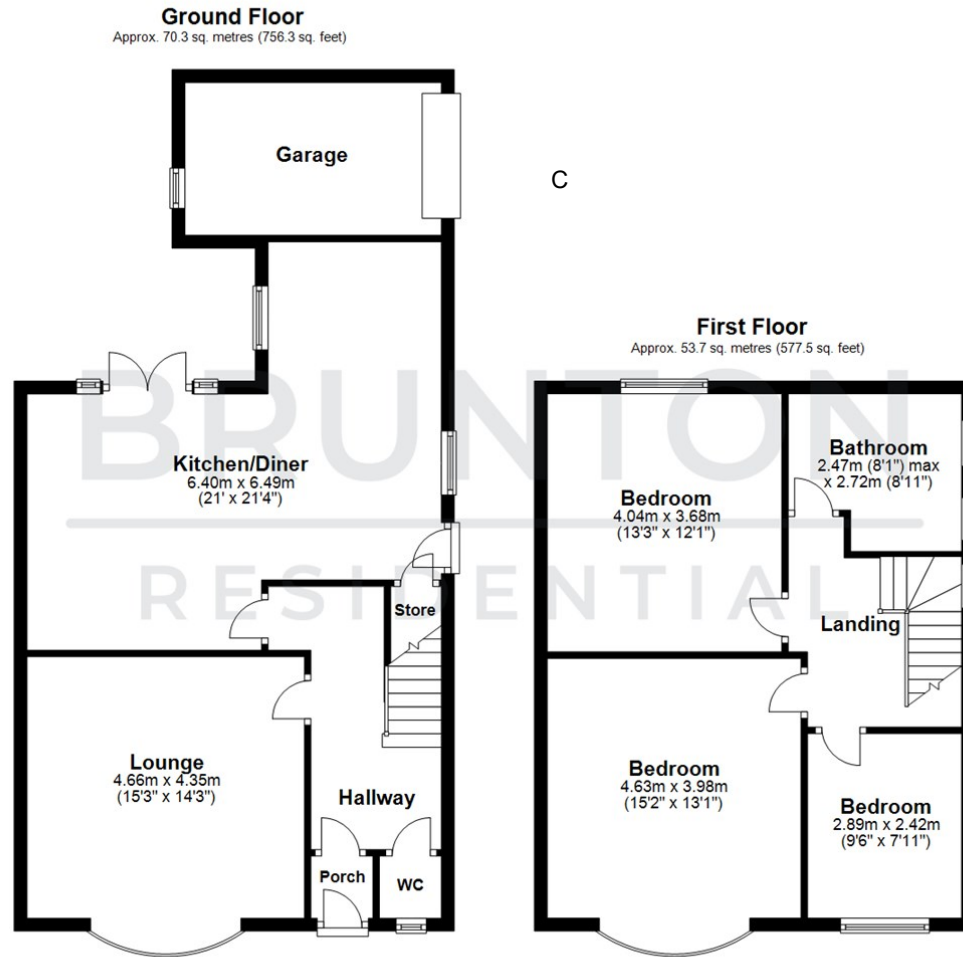
TENURE : Freehold

LOCAL AUTHORITY :

COUNCIL TAX BAND : C

EPC RATING : D

SERVICES :



England & Wales

England & Wales