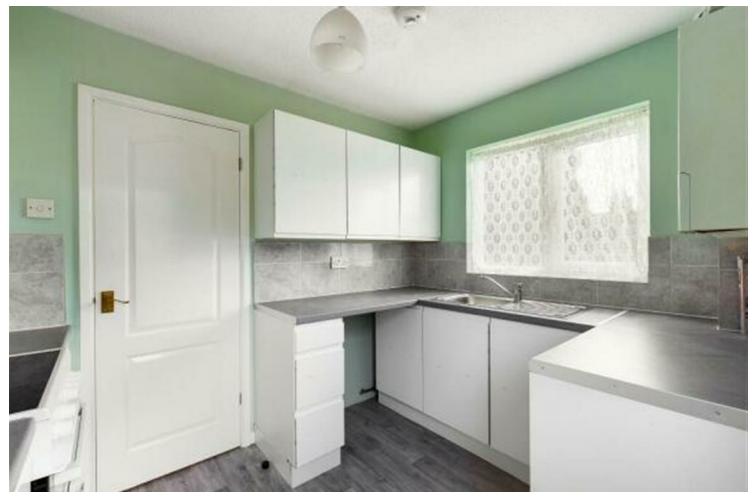


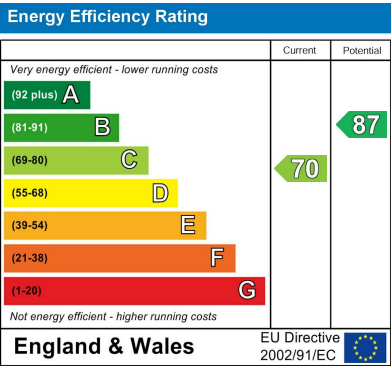


**14 CORNFLOWER HILL  
EXETER  
EX4 2PF**

**£1,250 Per month**

A well presented semi detached family house occupying a corner plot, with double glazing, gas central heating and two parking spaces. The accommodation has been freshly decorated throughout and comprises, lounge, dining room, recently refitted kitchen, three bedrooms and a refitted bathroom. Gardens to the front and rear. two parking spaces. The property enjoys views over the surrounding area and countryside.





Agents Note: Whilst every care has been taken to prepare these particulars, they are for guidance purposes only. All measurements are approximate and are for general guidance purposes only and whilst every care has been taken to ensure their accuracy, they should not be relied upon and potential buyers/tenants are advised to recheck the measurements

