



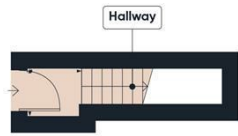
6 DAISY LINKS

EXETER, EX4 2PQ

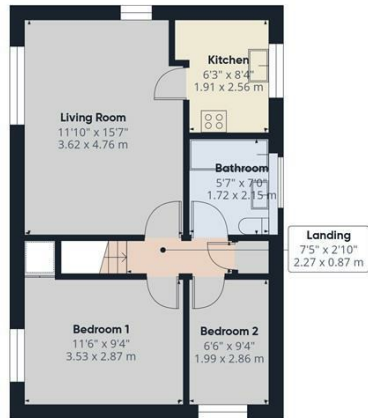
£850 PER MONTH

A well presented modern purpose built first floor apartment with pleasant views. The accommodation which is presented in excellent condition and benefits from UPVC double glazing and gas central heating comprises entrance lobby, living room, refitted kitchen and bathroom. Two bedrooms, Enclosed courtyard garden and allocated parking.

**weekes
& partners**
estate agents



Ground floor



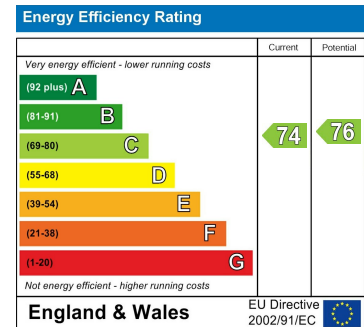
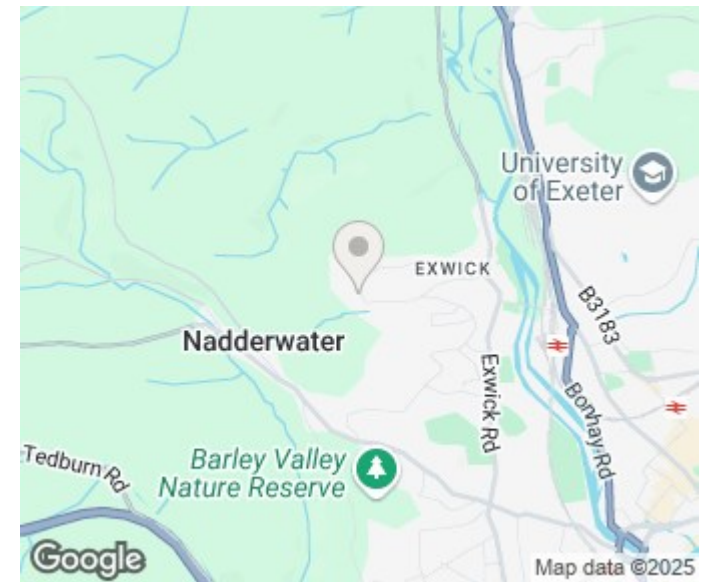
Floor 1

Approximate total area⁽¹⁾
519 ft²
48.2 m²

(1) Excluding balconies and terraces

Calculations reference the RICS IPMS 3C standard. Measurements are approximate and not to scale. This floor plan is intended for illustration only.

GIRAFFE360



Agents Note: Whilst every care has been taken to prepare these particulars, they are for guidance purposes only. All measurements are approximate and are for general guidance purposes only and whilst every care has been taken to ensure their accuracy, they should not be relied upon and potential buyers/tenants are advised to recheck the measurements

LCO Management
Broadwalk House Southernhay West
Exeter
Devon
EX1 1TS

01392 343200
enquiries@lcomanagement.com

weekes
& partners
estate agents