

HARWOOD
FOUR
BEDROOM
HOME

BLOOR HOMES



A four bedroom detached home comprising a spacious lounge and impressive kitchen / dining / family area with a bay window, both feature beautiful French doors opening onto the rear garden. Downstairs also includes a convenient utility cupboard, study and cloakroom. Upstairs is home to the family bathroom with separate bath and shower cubicle, plus four double bedrooms. The master bedroom benefits from fitted wardrobes and an en suite shower room.

HARWOOD

AN OUTSTANDING FOUR
BEDROOM FAMILY HOME

**HARWOOD
FOUR
BEDROOM
HOME**

FIRST FLOOR:

BEDROOM 1
3.73m x 3.01m
12'3" x 9'10"

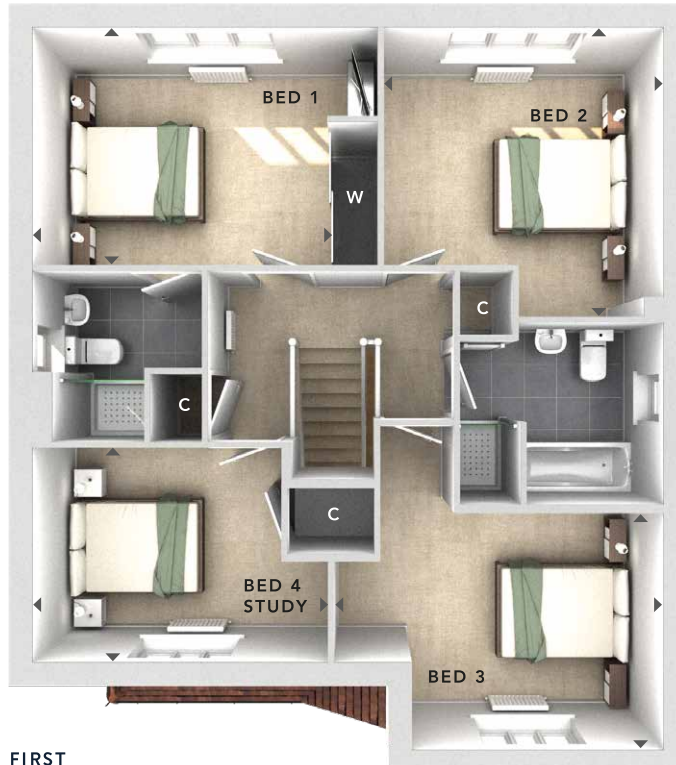
EN SUITE

BEDROOM 2
3.55m x 3.66m
11'8" x 12'0"

BEDROOM 3
4.19m x 3.00m
13'9" x 9'10"

BEDROOM 4 / STUDY
3.74m x 2.72m
12'3" x 8'11"

BATHROOM



FIRST FLOOR

GROUND FLOOR:

LOUNGE
3.59m x 4.75m
11'9" x 15'7"

KITCHEN / DINING / FAMILY
4.26m x 8.05m
14'0" x 26'5"

STUDY
3.16m x 2.23m
10'4" x 7'4"

UTILITY CUPBOARD

CLOAKS



GROUND FLOOR

W	- Fitted Wardrobes
C	- Storage
U	- Utility Cupboard
△	- External Access
◀▶	- Measurement Points
481 BRICK 6.10 SOU BOU	



These particulars are intended as a preliminary guide for prospective purchasers and should not be relied upon. The elevational treatment for individual house types shows a typical arrangement. Details of materials and design treatments may vary. Any artist impressions shown are not intended to represent any particular plot. Purchasers are advised to inspect the layout plan to establish the arrangement of the house and surrounding property. Internal layouts show a general arrangement which may vary from plot to plot. Room sizes given are approx. overall finished room sizes and subject to normal building tolerances (i.e. ± 75mm). In all instances purchasers are advised to inspect plot specific information available from our sales team. Nothing in these particulars or verbal assurance shall form or constitute part of any contract, and are given without any responsibility on behalf of Bloor Homes.