



2 Floors



4 Bedrooms



2 En suites



Home Office

PEELE
FOUR
BEDROOM
HOME

Creating Better Life Experiences.
One Home at a Time.

A four bedroom detached home featuring a generously sized lounge, home office, an outstanding open plan kitchen / dining / family area with French doors opening onto the rear garden. Upstairs is home to four double bedrooms, two with an en suite shower room and the master bedroom complete with fitted wardrobes.

PEELE FOUR BEDROOM HOME

◇ DIMENSIONS

First Floor:

Bedroom 1
2.77m x 3.91m
9'1" x 12'10"

En Suite

Bedroom 2
2.85m x 4.56m
9'4" x 14'11"

Bedroom 3
2.85m x 2.98m
9'4" x 9'9"

Bedroom 4
3.42m x 3.08m
11'3" x 10'1"

Ground Floor:

Lounge
3.81m x 4.94m
12'6" x 16'2"

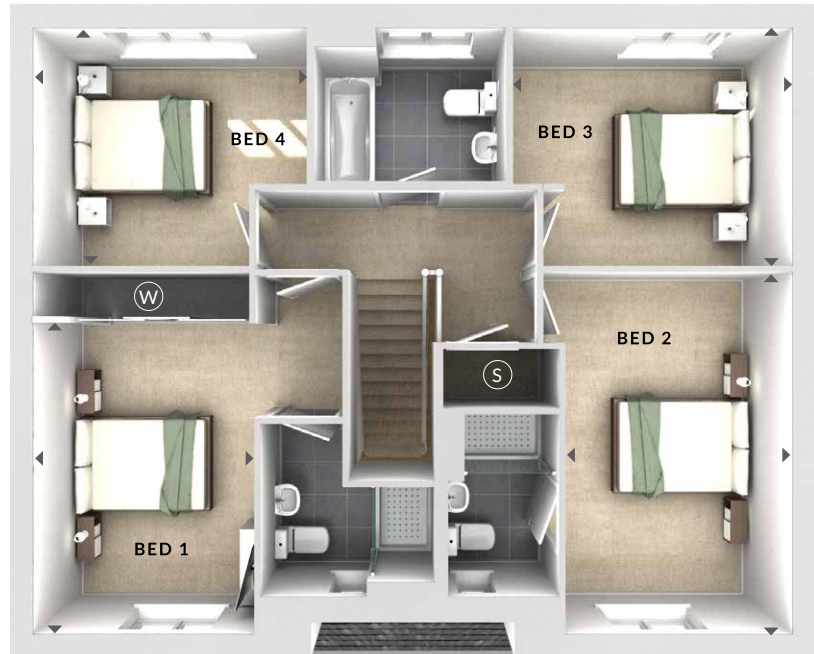
Kitchen / Dining / Family

9.28m x 3.70m
30'5" x 12'1"

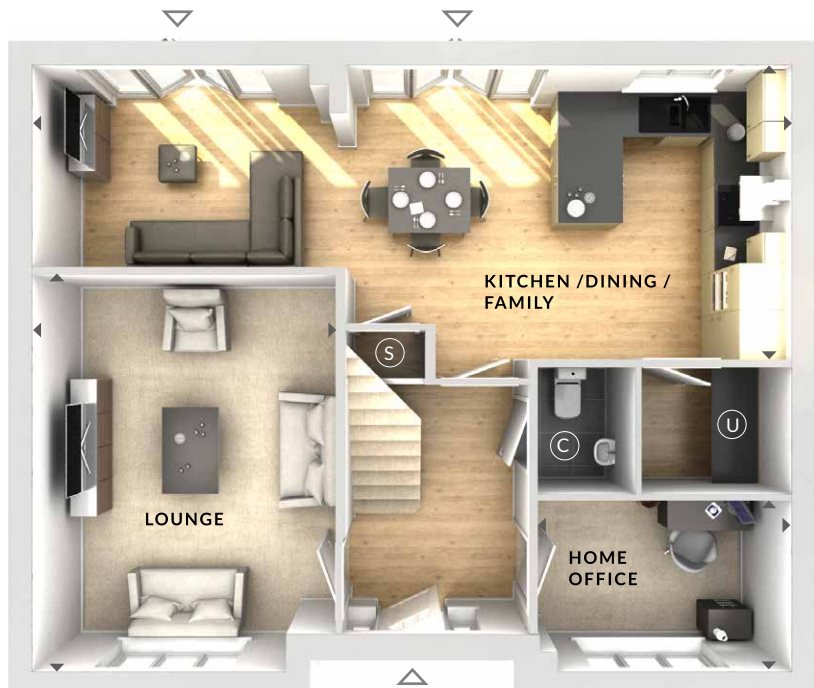
Home Office
3.16m x 2.12m
10'4" x 6'11"

- (S) Storage
- (C) Cloaks
- (W) Wardrobes
- (U) Utility

- ◄► Measurement Points
- △ External Access



First Floor



Ground Floor