



River Gardens, Feltham, TW14 0

**£250,000**

Ash Estates

| 02035765423







- Access to loft space
- Private garden
- Moments from Hounslow High Street and Feltham Leisure Park
- Excellent transport links to Central London and Heathrow

---

Brought to you by Ash Estates, this fantastic first-floor maisonette in Feltham offers an incredible opportunity to get on the property ladder or make a smart investment.

- Private garden – your own outdoor space - Spacious living area and well-proportioned bedroom - Moments from Hounslow High Street and Feltham Leisure Park - Excellent transport links to Central London and Heathrow

A rare find – act fast. With its low running costs, sought-after location, and private garden, this property is not to be missed.

Contact Ash Estates today to book a viewing.







1



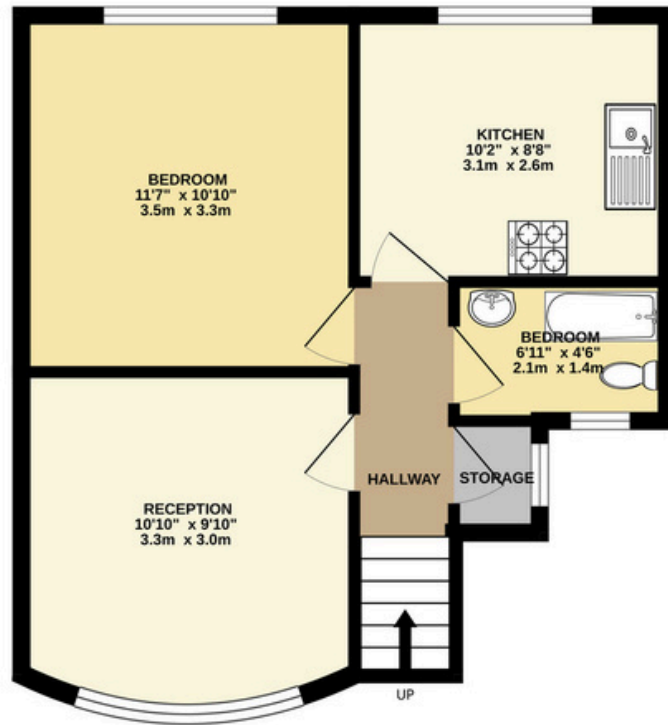
1



1



1ST FLOOR  
422 sq.ft. (39.2 sq.m.) approx.



1 BEDROOM FIRST FLOOR MAISONNETTE  
TOTAL FLOOR AREA: 422 sq.ft. (39.2 sq.m.) approx.  
Whilst every attempt has been made to ensure the accuracy of the floorplan contained here, measurements of doors, windows, rooms and any other items are approximate and no responsibility is taken for any error, omission or mis-statement. This plan is for illustrative purposes only and should be used as such by any prospective purchaser. The services, systems and appliances shown have not been tested and no guarantee as to their operability or efficiency can be given.  
Made with Metropix ©2025

