



THE OLD INFANT SCHOOL ST. ANDREWS

GAINSBOROUGH, DN21 4PJ

£335,000
FREEHOLD

The former infant school in Kirton In Lindsey is a remarkable stone-built Grade 2 listed property situated near the local church. The building has been thoughtfully converted into a residential home while preserving its character as a former school.



WWW.BILTONS.CO.UK
01724 642002

THE OLD INFANT SCHOOL

- PERIOD HOME • THREE BEDROOMS • DOUBLE GARAGE • CHURCH SIDE LOCATION • VILLAGE LOCATION



The former infant school in Kirton In Lindsey is a remarkable stone-built Grade 2 listed property situated near the local church. The building has been thoughtfully converted into a residential home while preserving its character as a former school. The conversion has been carried out to the highest standards, resulting in a stunning living space. Upon entering the property through the Reception Hallway, you'll be greeted by high ceilings, creating a spacious and grand entrance. From there, the Lounge offers a delightful view of the courtyard to the front, with picturesque church views adding to the ambiance. The Dining Room features a unique and eye-catching pillar box red spiral staircase that leads to the first floor, adding a touch of character to the space, this follows onto the Kitchen which is well-appointed and provides a functional and stylish area for culinary activities. The Master Bedroom is complete with built-in wardrobes is to the ground floor, offering ample storage space, and an En-Suite bathroom for added convenience and privacy. Completing the ground floor is bedroom Three, currently utilized as a home office, offers flexibility in its use to suit the needs of the residents, additionally, there is a Utility Room that also serves as a WC, providing practicality and functionality to the home. On the first floor, you'll find Bedroom Two, also with its own En-Suite, providing comfort and privacy to its occupants. The property truly combines modern living standards with the unique charm and character of a former school building. Externally, the property boasts city-style gardens, adding to its charm and providing a pleasant outdoor space. Additionally, there

is a double garage, offering convenient parking and storage options. Reception hallway 17' 3" x 6' 8" (5.26m x 2.03m) Lounge 19' 7" x 13' 8" (5.97m x 4.17m) Dining room 13' 2" x 10' 0" (4.01m x 3.05m) Kitchen 11' 4" x 10' 10" (3.45m x 3.3m) Master bedroom 19' 4" x 11' 9" (5.89m x 3.58m) En-suite 8' 4" x 6' 8" (2.54m x 2.03m) Utility Room With two piece suite comprising of wash hand basin, Victorian style high flush WC and plumbing for shower, built in cupboard and tiled flooring. Bedroom three 12' 5" x 8' 4" (3.78m x 2.54m) . First floor galleried landing 10' 8" x 8' 10" (3.25m x 2.69m) Approx Having first floor cast iron walk way leading from the spiral staircase to three sides, cast iron school style radiator, skylight window and door into: Bedroom two 11' 6" x 10' 8" (3.51m x 3.25m) Two skylight windows, radiator, built in cupboard housing central heating boiler and door into: En-suite 9' 0" x 3' 2" (2.74m x 0.97m) With suite comprising of low level WC, pedestal wash hand basin and shower cubicle. Outside The property is bounded by stone walling and double wrought iron gates leading to a block paved driveway. There are two front garden areas which are mainly laid to gravel with a variety of flowers, plants and shrubs and garden tool shed. Kent style barn garage 18' 8" x 17' 7" (5.69m x 5.36m) Approx Being wooden framed with a slate roof with light, power and boarded storage area above

Full Description

The former infant school in Kirton In Lindsey is a remarkable stone-built Grade 2 listed property situated near the local church. The building has been thoughtfully converted into a residential home while

preserving its character as a former school. The conversion has been carried out to the highest standards, resulting in a stunning living space.

Upon entering the property through the Reception Hallway, you'll be greeted by high ceilings, creating a spacious and grand entrance. From there, the Lounge offers a delightful view of the courtyard to the front, with picturesque church views adding to the ambiance. The Dining Room features a unique and eye-catching pillar box red spiral staircase that leads to the first floor, adding a touch of character to the space, this follows onto the Kitchen which is well-appointed and provides a functional and stylish area for culinary activities. The Master Bedroom is complete with built-in wardrobes is to the ground floor, offering ample storage space, and an En-Suite bathroom for added convenience and privacy. Completing the ground floor is bedroom Three, currently utilized as a home office, offers flexibility in its use to suit the needs of the residents, additionally, there is a Utility Room that also serves as a WC, providing practicality and functionality to the home. On the first floor, you'll find Bedroom Two, also with its own En-Suite, providing comfort and privacy to its occupants. The property truly combines modern living standards with the unique charm and character of a former school building. Externally, the property boasts city-style gardens, adding to its charm and providing a pleasant outdoor space. Additionally, there is a double garage, offering convenient parking and storage options.

RECEPTION HALLWAY

Lounge

Dining room

Kitchen

Master bedroom

En-suite

Utility Room

With two piece suite comprising of wash hand basin, Victorian style high flush WC and plumbing for shower, built in cupboard and tiled flooring

Bedroom three

First floor galleried landing

Having first floor cast iron walkway leading from the spiral staircase to three sides, cast iron school style radiator, skylight window and door into:

Bedroom Two

Two skylight windows, radiator, built in cupboard housing central heating boiler and door into:

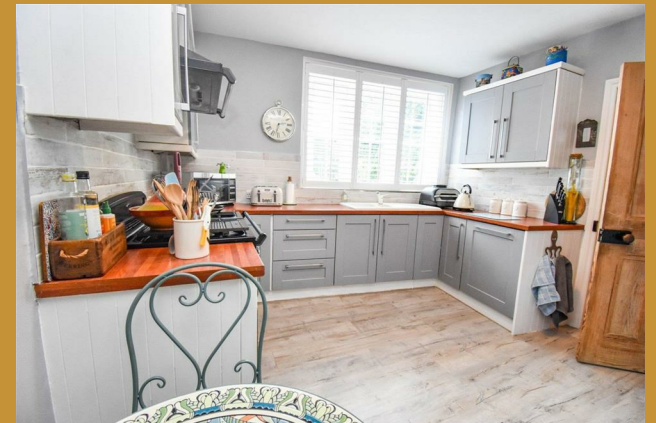
En-suite

(With suite comprising of low level WC, pedestal wash hand basin and shower cubicle.

Outside

The property is bounded by stone walling and double wrought iron gates leading to a block paved driveway. There are two front garden areas which are mainly laid to gravel with a variety of flowers, plants and shrubs and garden tool shed. Kent style barn garage 18' 8" x 17' 7" (5.69m x 5.36m) Approx Being wooden framed with a slate roof with light, power and boarded storage area above

THE OLD INFANT SCHOOL





THE OLD INFANT SCHOOL

ADDITIONAL INFORMATION

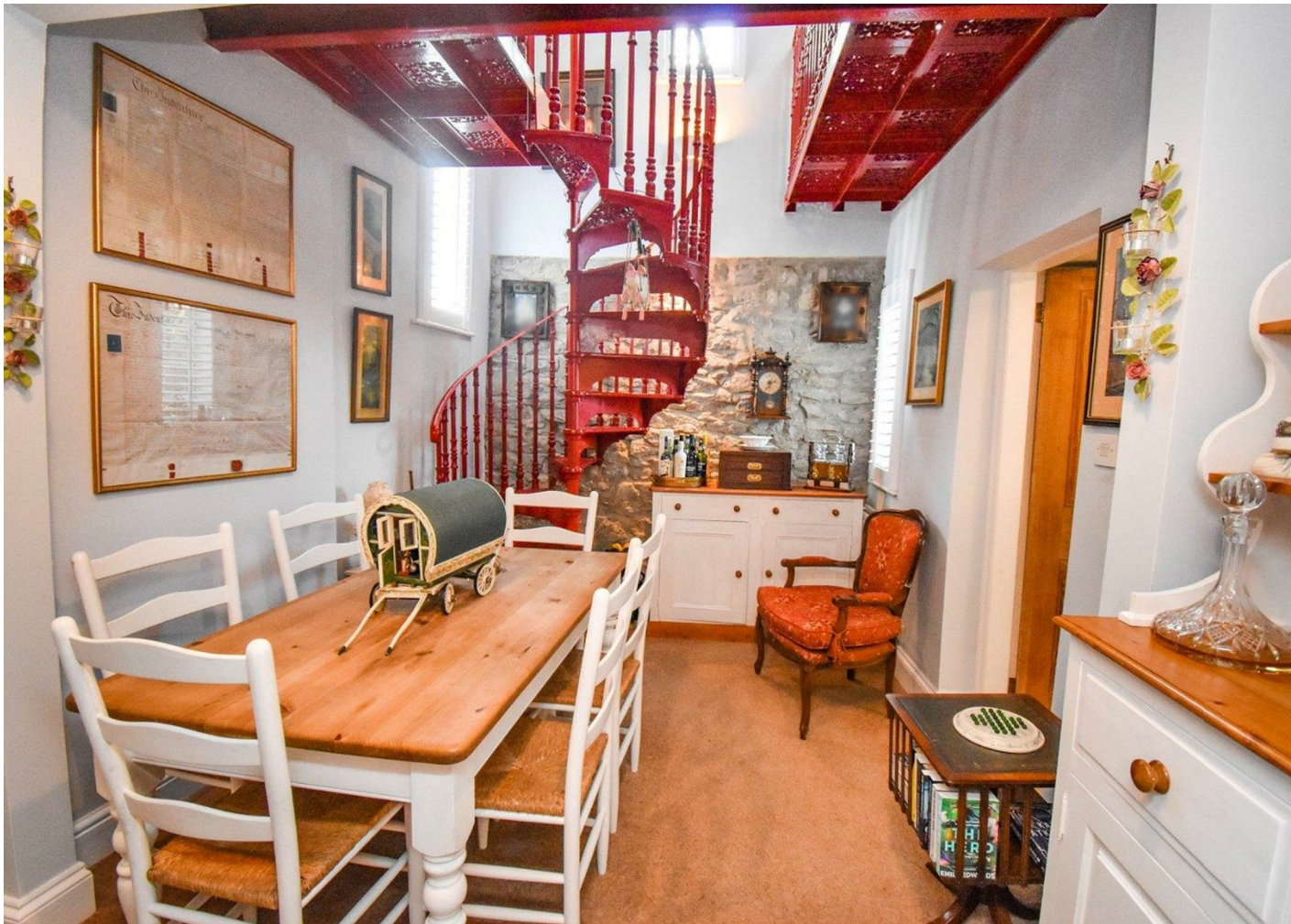
Local Authority –

Council Tax – Band


Viewings – By Appointment Only

Floor Area – sq ft

Tenure – Freehold





Energy Efficiency Rating		
	Current	Potential
<i>Very energy efficient - lower running costs</i>		
(92 plus) A		
(81-91) B		
(69-80) C		
(55-68) D		
(39-54) E		
(21-38) F		
(1-20) G		
<i>Not energy efficient - higher running costs</i>		
England & Wales	EU Directive 2002/91/EC 	

Agents Note: Whilst every care has been taken to prepare these particulars, they are for guidance purposes only. All measurements are approximate and are for general guidance purposes only and whilst every care has been taken to ensure their accuracy, they should not be relied upon and potential buyers/tenants are advised to recheck the measurements

Biltons Estate Agents
 20 Dartmouth Road
 Scunthorpe
 DN17 1TR

01724 642002
enquiries@biltons.co.uk
<https://biltons.co.uk/>



BILTONS

THE PERSONAL
 AGENTS

WWW.BILTONS.CO.UK

01724 642002