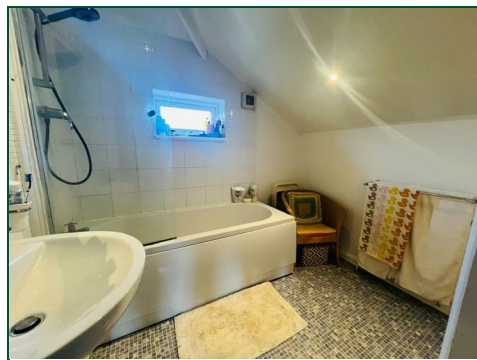




# Wheatfield Road

Abington, Northampton

oriordanbond  
SALES & LETTINGS



## Wheatfield Road

Abington

NN3 2NE

PRICE £255,000

O'Riordan Bond is thrilled to offer for sale this impressive two double bedroom property with good size gardens to the front and rear and ample off road parking plus a tandem garage.

The accommodation comprises spacious entrance hall, sitting room, kitchen/dining room, utility, cloakroom/WC, landing, two good size bedrooms and a re-fitted bathroom. Benefits include gas radiator heating and uPVC double glazing. Of particular note is the outside space that comes with this property with a decent front garden and very impressive rear garden as well as off road parking to the side which also leads to a double length garage. (B/863/L)

### Additional information

- Council Tax Band: A
- Energy Efficiency Rating: E

### Viewing

Viewing strictly by appointment – details below

### Disclaimer

O'Riordan Bond Estate Agents Limited has not tested apparatus, equipment, fittings or services and so cannot verify they are in working order. The buyer is advised to obtain verification from their solicitor or surveyor.

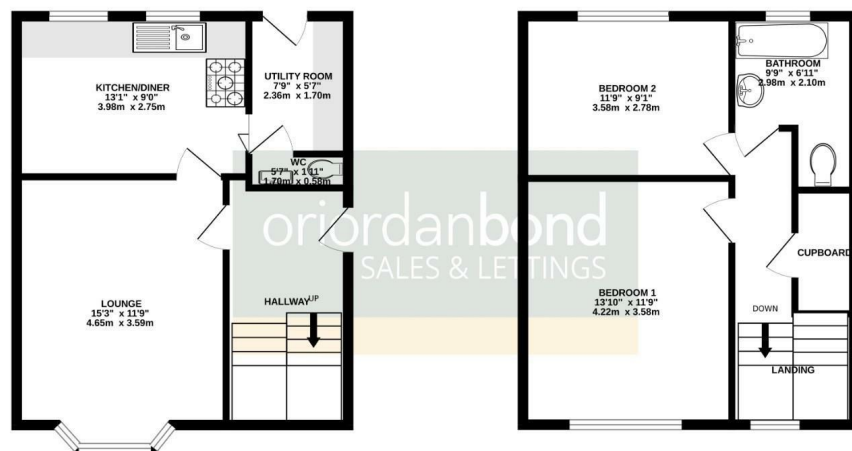
O'Riordan Bond Abington East Sales  
01604 639007

abingtoneast@oriordanbond.co.uk



GROUND FLOOR

1ST FLOOR



TOTAL FLOOR AREA : 863 sq.ft. (80.2 sq.m.) approx.

Whilst every attempt has been made to ensure the accuracy of the floorplan contained here, measurements of doors, windows, rooms and any other items are approximate and no responsibility is taken for any error, omission or mis-statement. This plan is for illustrative purposes only and should be used as such by any prospective purchaser. The services, systems and appliances shown have not been tested and no guarantee as to their operability or efficiency can be given.  
Made with Metagap CSD25