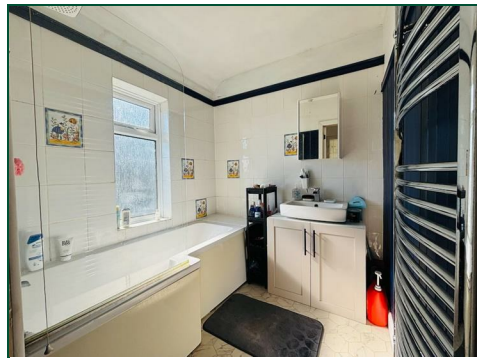




Wheatfield Road South

Abington, Northampton

oriordanbond
SALES & LETTINGS



Wheatfield Road South

Abington

NN3 2HH

OFFERS OVER £220,000

O'Riordan Bond is delighted to offer for sale this much extended and improved two double bedroom terraced home located in a quiet area within walking distance to Abington Park.

The accommodation comprises entrance hall, large kitchen/breakfast room, sitting room open to a sun lounge/dining room, two first floor double bedrooms with built-in wardrobes/cupboards and a refitted bathroom suite with separate WC. Outside is a double width block paved driveway to the front providing off road parking and a south facing rear garden being laid mainly to lawn with large decked patio area. There is a covered path to the side of the property providing access front to back. Further benefits include uPVC double glazing and gas radiator heating. (B/890/M)

Additional information

- Council Tax Band: A
- Energy Efficiency Rating: D

Viewing

Viewing strictly by appointment – details below

Disclaimer

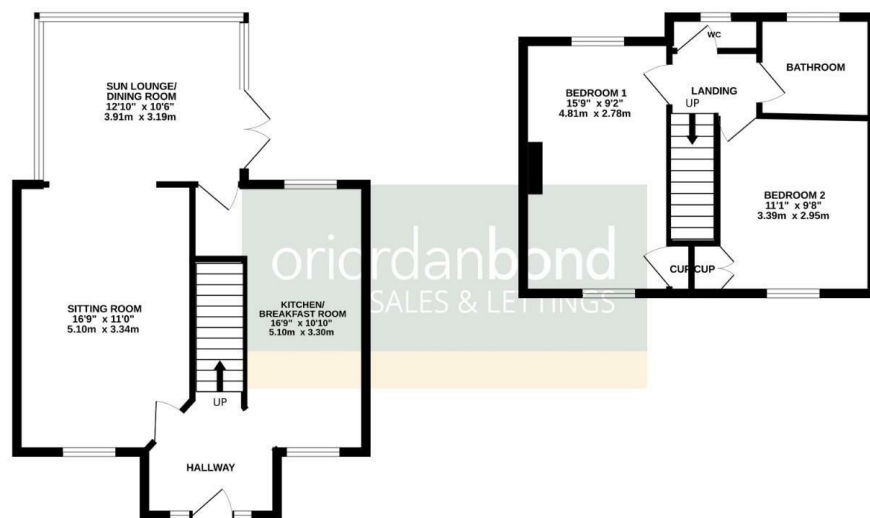
O'Riordan Bond Estate Agents Limited has not tested apparatus, equipment, fittings or services and so cannot verify they are in working order. The buyer is advised to obtain verification from their solicitor or surveyor.

O'Riordan Bond Abington East Sales
01604 639007

abingtoneast@oriordanbond.co.uk

GROUND FLOOR

1ST FLOOR



TOTAL FLOOR AREA : 890 sq.ft. (82.7 sq.m.) approx.

Whilst every attempt has been made to ensure the accuracy of the floorplan contained here, measurements of doors, windows, rooms and any other items are approximate and no responsibility is taken for any error, omission or mis-statement. This plan is for illustrative purposes only and should be used as such by any prospective purchaser. The services, systems and appliances shown have not been tested and no guarantee as to their operability or efficiency can be given.
Made with Metropix ©2025

