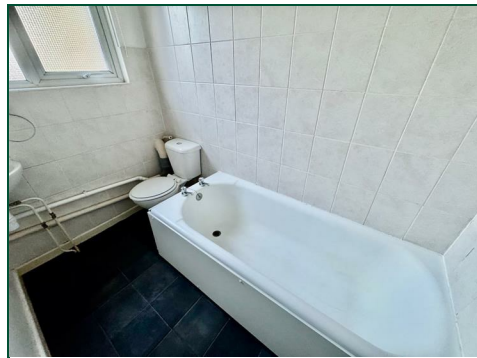
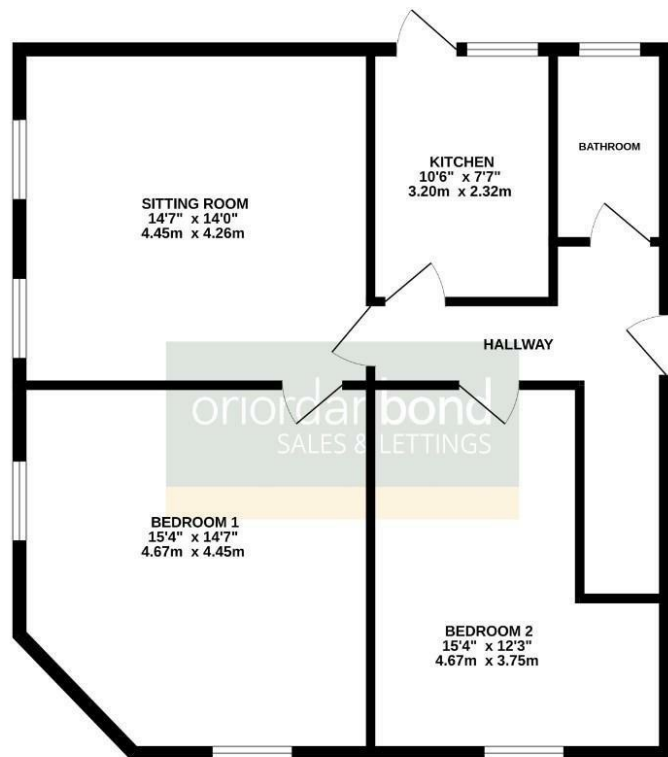


Abington, Northampton

SALES & LETTINGS



GROUND FLOOR
776 sq.ft. (72.1 sq.m.) approx.



TOTAL FLOOR AREA : 776 sq.ft. (72.1 sq.m.) approx.
Whilst every attempt has been made to ensure the accuracy of the floorplan contained here, measurements of doors, windows, rooms and any other items are approximate and no responsibility is taken for any error, omission or mis-statement. This plan is for illustrative purposes only and should be used as such by any prospective purchaser. The services, systems and appliances shown have not been tested and no guarantee as to their operability or efficiency can be given.
Made with Metagen 02/04

Birchfield Road East

Abington

NN3 2HG

GUIDE PRICE £100,000

O'Riordan Bond is pleased to offer for sale this very spacious and well presented two bedroom first floor apartment situated in this popular location. Offered with no upper chain, the property has access to many local amenities as well as Abington Park.

The accommodation comprises entrance hall, large sitting room, fitted kitchen, two large double bedrooms and a re-fitted bathroom. Benefits include double glazing and a secure private entrance to the rear with garden/patio area. (B/776/S)

Leasehold Information: Lease Remaining - 85 years (as of 2024) / Ground Rent - £600 per annum / Service Charge - £163 per annum

Additional information

- Council Tax Band: A
- Energy Efficiency Rating: E

Viewing

Viewing strictly by appointment – details below

Disclaimer

O'Riordan Bond Estate Agents Limited has not tested apparatus, equipment, fittings or services and so cannot verify they are in working order. The buyer is advised to obtain verification from their solicitor or surveyor.

O'Riordan Bond Abington East Sales
01604 639007

abingtoneast@oriordanbond.co.uk

