



# Birchfield Crescent

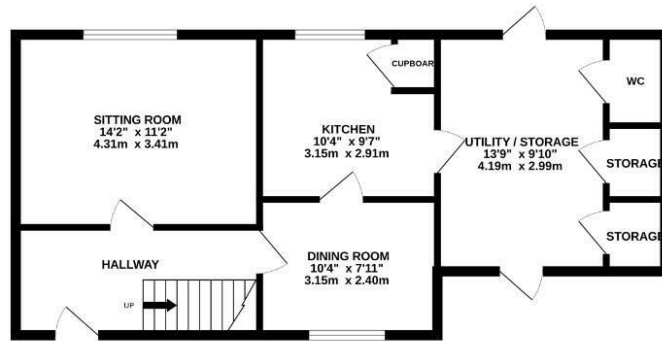
Abington, Northampton

oriordanbond  
SALES & LETTINGS

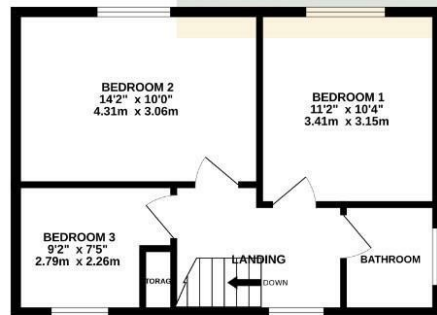




GROUND FLOOR



1ST FLOOR



TOTAL FLOOR AREA : 1035 sq.ft. (96.2 sq.m.) approx.

Whilst every attempt has been made to ensure the accuracy of the floorplan contained herein, measurements of doors, windows, rooms and any other items are approximate and no responsibility is taken for any error, omission or mis-statement. This plan is for illustrative purposes only and should be used as such by any prospective purchaser. The services, systems and appliances shown have not been tested and no guarantee as to their operability or efficiency can be given.  
Made with Metageo.CO2004

# Birchfield Crescent

Abington  
NN3 2TG

PRICE £220,000

A three bedroom semi-detached home situated in this popular location. The property is offered to the market with no onward chain and is located close to many local schools.

The accommodation comprises entrance hall, sitting room, dining room kitchen and utility/store room with access to a cloakroom/WC. The first floor provides three bedrooms and a wet room. Outside is a large front garden and a large enclosed rear garden mainly laid to patio with lawn area beyond. Further benefits include gas radiator heating and double glazed windows. (C/1035/L)

### Additional information

- Council Tax Band: B
- Energy Efficiency Rating: D

### Viewing

Viewing strictly by appointment – details below

### Disclaimer

O'Riordan Bond Estate Agents Limited has not tested apparatus, equipment, fittings or services and so cannot verify they are in working order. The buyer is advised to obtain verification from their solicitor or surveyor.

O'Riordan Bond Abington East Sales  
01604 639007

abingtoneast@oriordanbond.co.uk

