



495, Wellingborough Road
Abington, Northampton

oriordanbond
SALES & LETTINGS



495

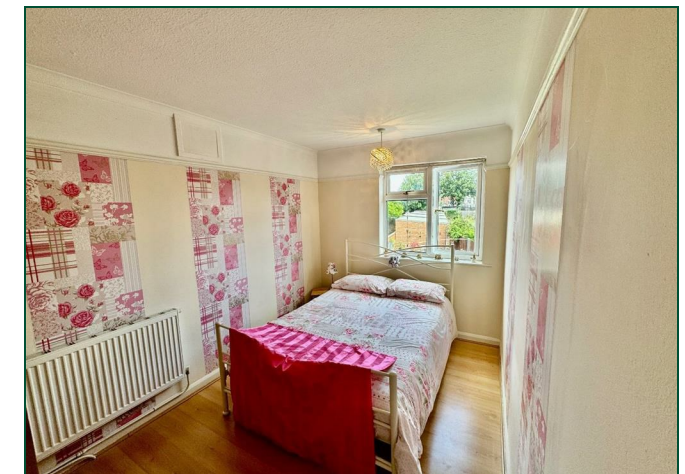
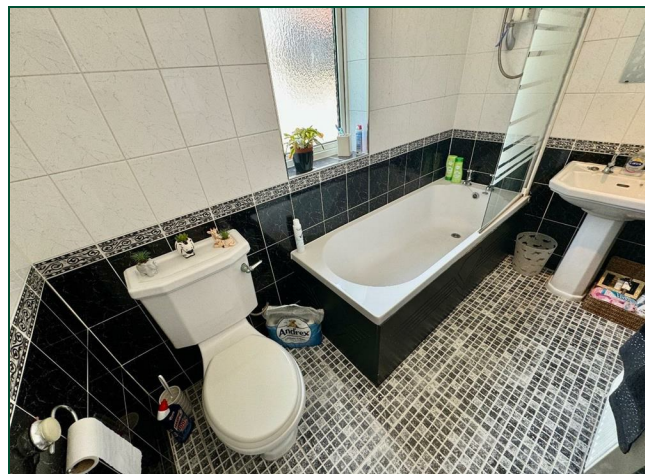
Wellingborough Road
Abington NN3 3HN

Offers Over
£300,000

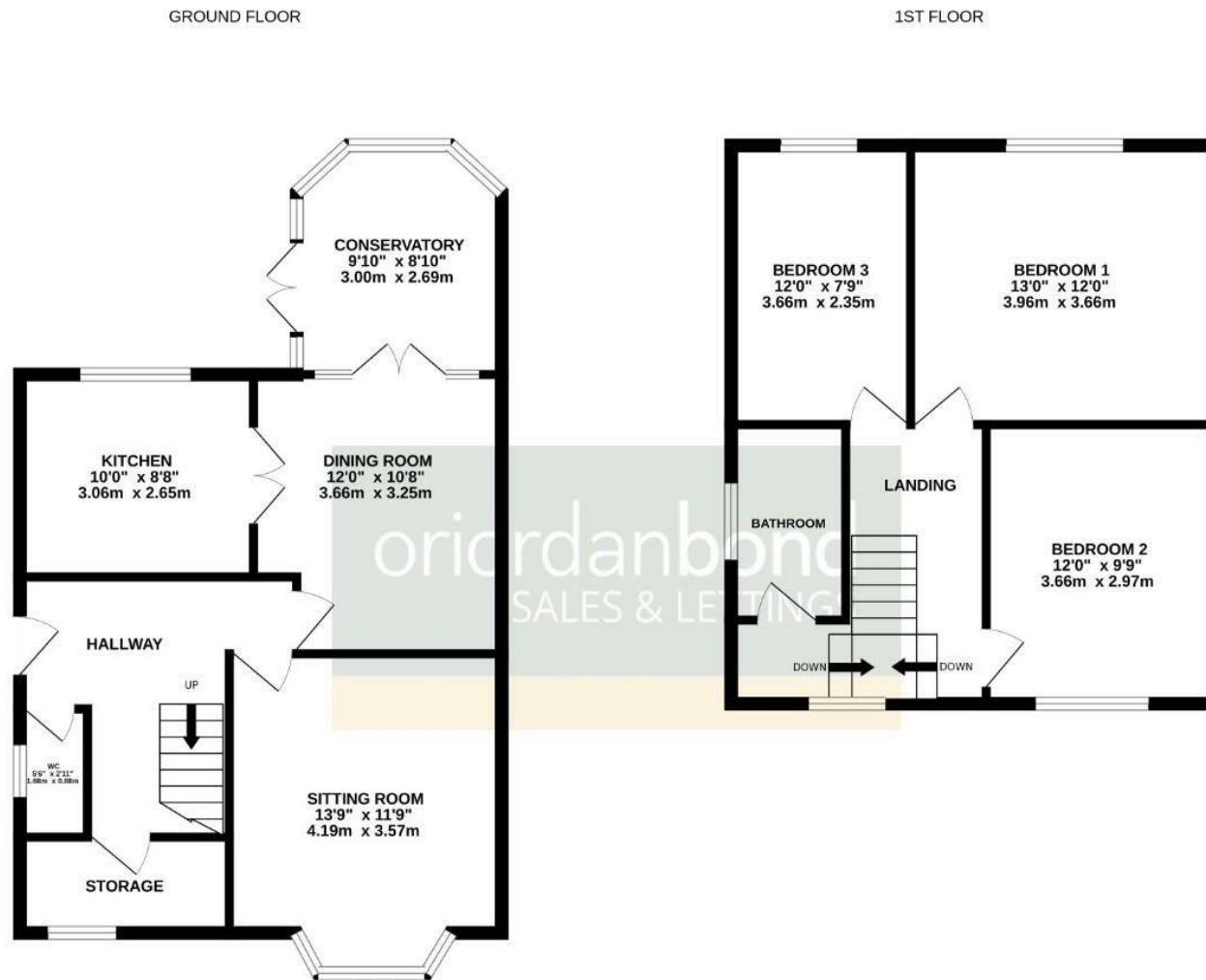
O'Riordan Bond is pleased to offer to the market this substantial three bedroom semi-detached property, situated in a highly regarded location, positioned opposite Abington Park, offering charming views of the park and lake.

The accommodation over two floors comprises entrance hall, cloakroom/WC, utility/storage, sitting room, dining room, kitchen and a conservatory. To the first floor are three double bedrooms and a family bathroom. Outside is a front garden and a larger than average mature rear garden. Further benefits include uPVC double glazing and gas radiator heating. (B/1086/L)

- Three bedroom semi-detached home
- Two reception rooms
- Conservatory
- Gas radiator heating
- Larger than average rear garden
- Opposite Abington Park







TOTAL FLOOR AREA : 1086 sq.ft. (100.9 sq.m.) approx.
 Whilst every attempt has been made to ensure the accuracy of the floorplan contained here, measurements of doors, windows, rooms and any other items are approximate and no responsibility is taken for any error, omission or mis-statement. This plan is for illustrative purposes only and should be used as such by any prospective purchaser. The services, systems and appliances shown have not been tested and no guarantee as to their operability or efficiency can be given.
 Made with Metropix ©2024



Additional information

- Council Tax Band: B
- Energy Efficiency Rating: D

Viewing

Viewing strictly by appointment – details below

Disclaimer

O’Riordan Bond Estate Agents Limited has not tested apparatus, equipment, fittings or services and so cannot verify they are in working order. The buyer is advised to obtain verification from their solicitor or surveyor.

O’Riordan Bond Abington East Sales
 01604 639007

abingtoneast@oriordanbond.co.uk

