



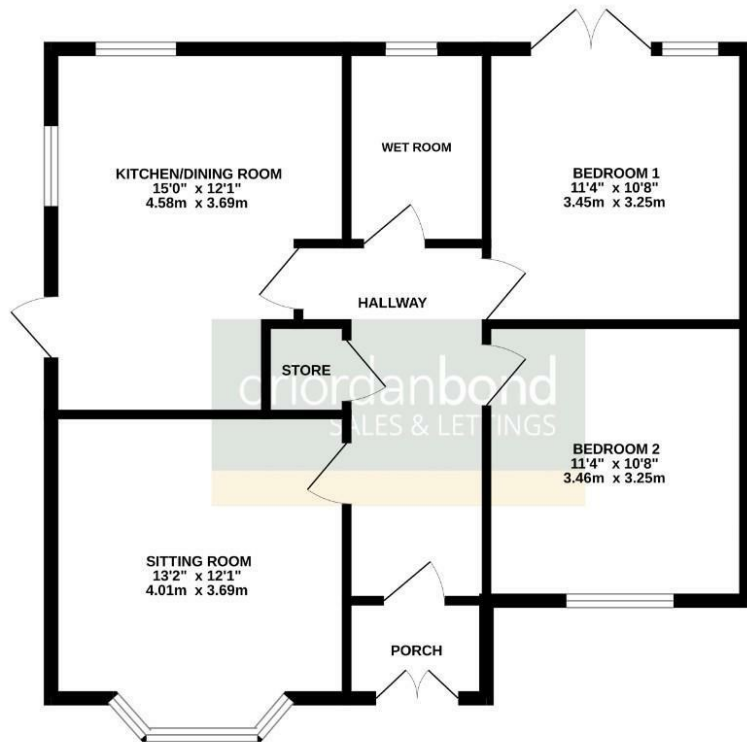
Birchfield Road East

The Headlands, Northampton

oriordanbond
SALES & LETTINGS



GROUND FLOOR
727 sq.ft. (67.5 sq.m.) approx.



TOTAL FLOOR AREA: 727 sq.ft. (67.5 sq.m.) approx.

Whilst every attempt has been made to ensure the accuracy of the floorplan contained here, measurements of doors, windows, rooms and any other items are approximate and no responsibility is taken for any error, omission or misstatement. This plan is for illustrative purposes only and should be used as such by any prospective purchaser. The services, systems and appliances shown have not been tested and no guarantee as to their operability or efficiency can be given.
Made with Metropac C2024

Birchfield Road East

The Headlands

NN3 2SZ

GUIDE PRICE £250,000

A well presented and spacious two bedroom semi-detached bungalow, in this quiet and sought after location, close to Abington Park and lots of local amenities. Offered for sale with no onward chain.

Accommodation comprises entrance porch, large tiled hallway, bay fronted sitting room, kitchen/breakfast room with large pantry store, two good size double bedrooms and a modern, re-fitted fully tiled wet room. Outside are private gardens to three aspects and a driveway to side leading to a single garage. The property benefits from a gas radiator heating system and uPVC double glazing. (B/727/M)

Additional information

- Council Tax Band: C
- Energy Efficiency Rating: D

Viewing

Viewing strictly by appointment – details below

Disclaimer

O'Riordan Bond Estate Agents Limited has not tested apparatus, equipment, fittings or services and so cannot verify they are in working order. The buyer is advised to obtain verification from their solicitor or surveyor.

O'Riordan Bond Abington East Sales
01604 639007

abingtoneast@oriordanbond.co.uk

