



311 Birchfield Road East

Abington, Northampton

oriordanbond
SALES & LETTINGS



GROUND FLOOR



1ST FLOOR



311 Birchfield Road East

Abington
NN3 2SY

OFFERS OVER
£215,000

This extended and beautifully presented semi-detached home is positioned on this sought after road close to schools and local amenities. Offered for sale with no onward chain.

Accommodation comprises entrance hall, sitting room with hard wood flooring, snug/family room with feature fireplace, extended kitchen/dining room with some built-in appliances, utility and cloakroom/WC to the ground floor. The first floor offers three good size bedrooms, two with built-in wardrobes, and a re-fitted shower room. Outside is a block paved driveway providing off road road parking to the front and a large rear garden with two feature patio areas and a summerhouse. Further benefits include gas radiator heating, uPVC double glazing, spot lights and a partly converted loft room. (A/1250/L)

Additional information

- Council Tax Band: C
- Energy Efficiency Rating: E

Viewing

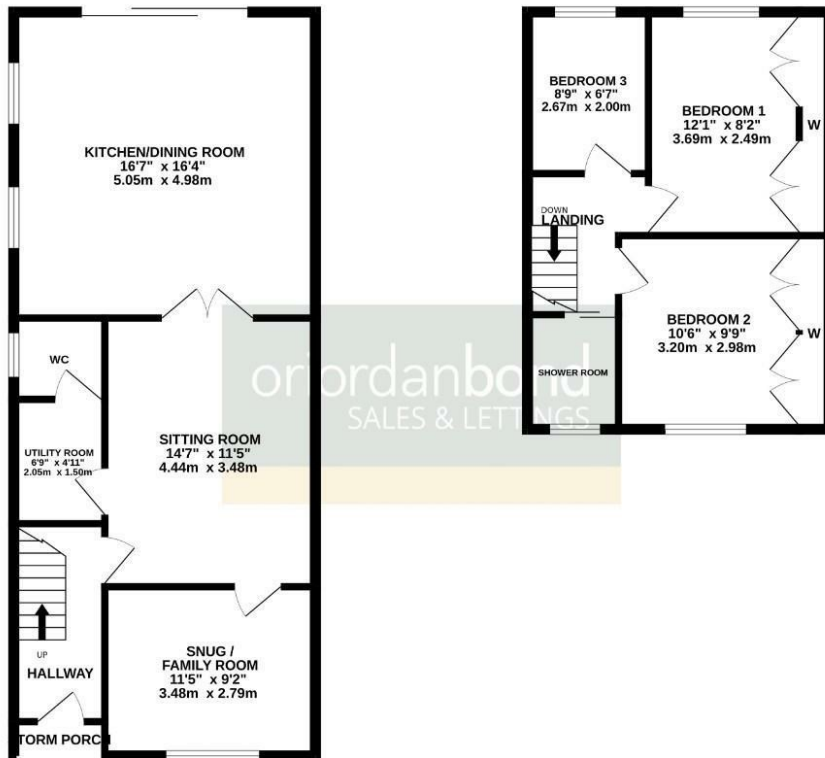
Viewing strictly by appointment – details below

Disclaimer

O’Riordan Bond Estate Agents Limited has not tested apparatus, equipment, fittings or services and so cannot verify they are in working order. The buyer is advised to obtain verification from their solicitor or surveyor.

O’Riordan Bond Abington East Sales
01604 639007

abingtoneast@oriordanbond.co.uk



TOTAL FLOOR AREA: 1250sq. ft. (116.1 sq.m.) approx.

Whilst every attempt has been made to ensure the accuracy of the floor plan contained here, measurements of doors, windows, stairs and any other items are approximate and no responsibility is taken for any error, omission or misstatement. This plan is for illustrative purposes only and should be used as such by any prospective purchaser. The services, systems and appliances shown have not been tested and no guarantee as to their operability or efficiency can be given. Made with Hologra CCDC