



267B Birchfield Road East

Abington, Northampton

oriordanbond
SALES & LETTINGS



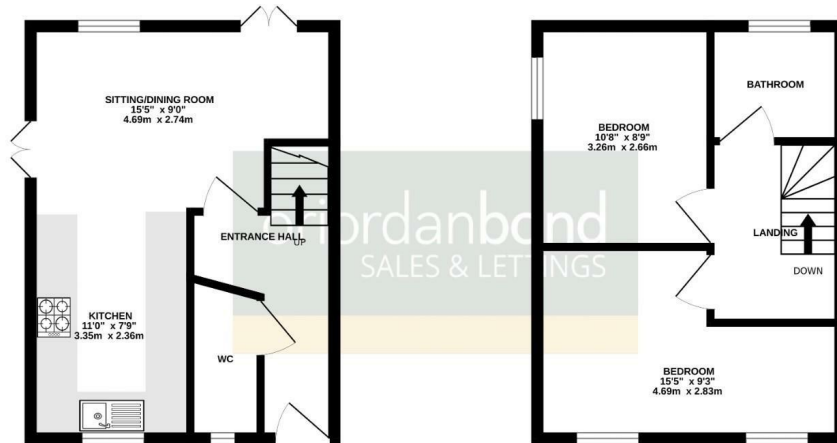
267B Birchfield Road East

Abington
NN3 2SN

OFFERS OVER
£210,000

GROUND FLOOR

1ST FLOOR



TOTAL FLOOR AREA: 725sq.ft. (67.4 sq.m.) approx.

Whilst every attempt has been made to ensure the accuracy of the floorplan contained here, measurements of doors, windows, rooms and any other items are approximate and no responsibility is taken for any error, omission or mis-statement. This plan is for illustrative purposes only and should be used as such by any prospective purchaser. The services, systems and appliances shown have not been tested and no guarantee as to their operability or efficiency can be given.
Made with Metropix 02024

Built in 2007 is this superbly presented end of terrace home, situated in this sought position within Abington, within walking distance to shops, schools and Abington Park.

Accommodation comprises entrance hall, cloakroom/WC, open plan sitting/dining room with hard wood flooring through to a modern kitchen with built-in cooking appliances to the ground floor. To the first floor are two double bedrooms and a family bathroom suite. Outside are enclosed gardens to three aspects incorporating a gravelled patio and seating area. Further benefits include gas radiator heating serviced via a combination boiler and uPVC double glazing. (A/725/M)

Additional information

- Council Tax Band: B
- Energy Efficiency Rating: C

Viewing

Viewing strictly by appointment – details below

Disclaimer

O'Riordan Bond Estate Agents Limited has not tested apparatus, equipment, fittings or services and so cannot verify they are in working order. The buyer is advised to obtain verification from their solicitor or surveyor.

O'Riordan Bond Abington East Sales
01604 639007

abingtoneast@oriordanbond.co.uk