



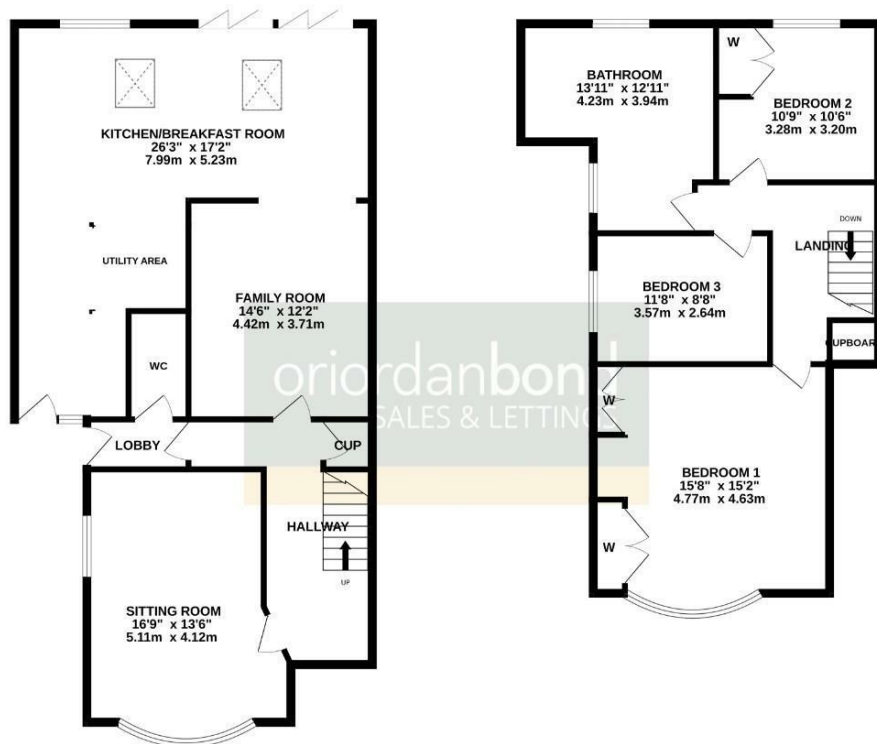
Pinewood Road
Spinney Hill, Northampton

oriordanbond
SALES & LETTINGS



GROUND FLOOR

1ST FLOOR



TOTAL FLOOR AREA : 1697 sq.ft. (157.7 sq.m.) approx.

Whilst every attempt has been made to ensure the accuracy of the floorplan contained here, measurements of doors, windows, rooms and any other items are approximate and no responsibility is taken for any error, omission or mis-statement. The plan is for illustrative purposes only and should be used as such by any prospective purchaser. The services, systems and appliances shown have not been tested and no guarantee as to their capability or efficiency can be given.
Made with Metrage CS224

Pinewood Road

Spinney Hill

NN3 2RB

PRICE £329,950

This extended and beautifully presented semi-detached home is positioned on this sought after road within Spinney Hill. The property provides good access to Eastfield Academy, Kingsley Primary School and Northampton School for Girls.

Accommodation comprises entrance hall, spacious sitting room with chimney breast surround, dining room with wood burning stove feature, large L-shaped re-fitted kitchen/breakfast room with built-in appliances, bi-folding doors to garden, skylights, utility area and re-fitted cloakroom/WC. The first floor offers three double bedrooms with built-in wardrobes to bedrooms one and two and a large re-fitted L-shaped bathroom suite. Outside is gravelled off road parking to the front and a large southerly facing landscaped rear garden with feature decking, further patio leading to a recently constructed detached home office with adjoining bar with seating area for entertaining. Further benefits include gas radiator heating, uPVC double glazing, hard wood flooring and spotlights. (A/1697/L)

Additional information

- Council Tax Band: C
- Energy Efficiency Rating: D

Viewing

Viewing strictly by appointment – details below

Disclaimer

O'Riordan Bond Estate Agents Limited has not tested apparatus, equipment, fittings or services and so cannot verify they are in working order. The buyer is advised to obtain verification from their solicitor or surveyor.

O'Riordan Bond Abington East Sales

01604 639007

abingtoneast@oriordanbond.co.uk

