



The Brook - Rosemary.
4 Bedrooms.
Detached.

The Brook - Rosemary.

4 Bedrooms.

Detached.

The Rosemary offers a grand design to be proud of.

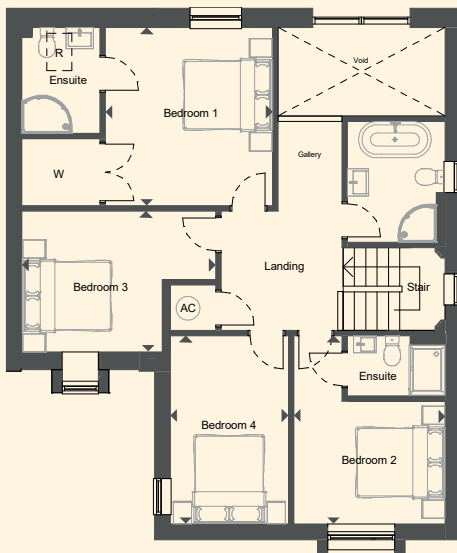
An expansive open-plan kitchen, family and dining area with double height ceiling above – where you can wave at those at the gallery landing and enjoy the space and light from the two-storey window. Glazed sliding doors lead onto the garden terrace – inviting the outdoors in.

An additional living room with a large window provides the perfect retreat for cosy nights in.

Upstairs doesn't fall short of expectations either – with four double bedrooms (two ensuite) plus a luxurious family bathroom, with large freestanding bath, off a generous landing with an open gallery to the ground floor.

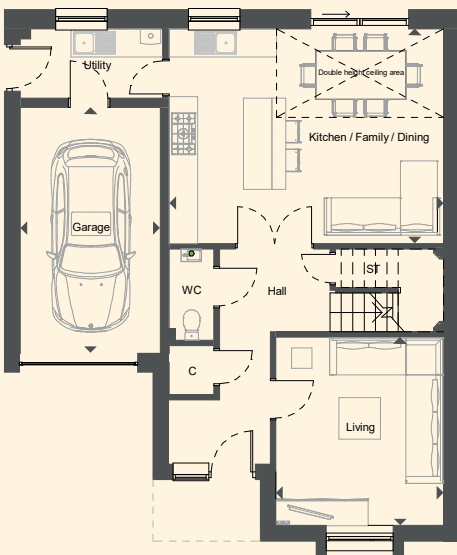
This house is complete with an integral garage and driveway.

We take every care in preparing our sales details and endeavour to make sure that details are correct at the point of going to print, however they are pre construction and may be subject to changes and prospective purchasers should satisfy themselves as to the correctness before purchase and take legal advice. Photographs and illustrations are a guide and do not represent items included in the sale. Room sizes are approximate; do not use them to buy carpets or furniture. Floor plans are for guidance only. You must take advice from your legal representative who should make local enquiries and searches. If you are travelling a long distance to view a property please contact Floreat Homes to check that it has the features you are looking for. These details do not form any part of a contract.



First Floor Plan

Bedroom 1	3.9m x 3.7m	12'11" x 12'1"
Bedroom 2	3.4m x 2.7m	11' x 8'11"
Bedroom 3	4.3m x 3.1m	14'1" x 10'2"
Bedroom 4	4.2m x 2.6m	13'8" x 8'7"



Ground Floor Plan

Kitchen / Family / Dining	6.1m x 4.7m	19'10" x 15'5"
Living	4.2m x 3.7m	13'7" x 12'1"
Garage	5.4m x 3.1m	17'9" x 10'2"

Gross Internal Area

Level	Area	
Ground Floor	83.3 m ²	897 ft ²
First Floor	79.5 m ²	856 ft ²
	162.8 m ²	1753 ft ²

**CONSUMER
CODE FOR
HOME BUILDERS**

www.consumercode.co.uk



FLOREAT