



The Mews.
3 Bedrooms.
Detached or Link-detached.

The Mews.

3 Bedrooms.

Detached or Link-detached.

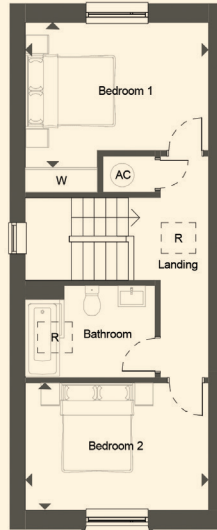
Our Mews homes have been cleverly designed to enable ground floor living if required, without compromising on style and space.

This Mews home has a separate kitchen/dining room with a vaulted ceiling above to offer plenty of natural light. Relaxation is therefore preserved in the living room – with both reception rooms offering glazed sliding door access to the garden.

A ground floor bedroom/study with separate shower room means a home that can evolve and adapt to differing circumstances. On the first floor there are a further two double bedrooms and a family bathroom.

Attached Single garage and driveway.

We take every care in preparing our sales details and endeavour to make sure that details are correct at the point of going to print, however they are pre construction and may be subject to changes and prospective purchasers should satisfy themselves as to the correctness before purchase and take legal advice. Photographs and illustrations are a guide and do not represent items included in the sale. Room sizes are approximate; do not use them to buy carpets or furniture. Floor plans are for guidance only. You must take advice from your legal representative who should make local enquiries and searches. If you are travelling a long distance to view a property please contact Floreat Homes to check that it has the features you are looking for. These details do not form any part of a contract.



First Floor Plan

Bedroom 1	4.02m x 3.20m	13'2" x 10'5"
Bedroom 2	4.02m x 2.80m	13'2" x 9'2"



Ground Floor Plan

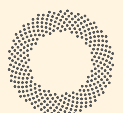
Kitchen / Dining	5.53m x 3.37m	18'1" x 11'0"
Living	4.25m x 3.74m	13'11" x 12'3"
Bedroom 3	4.02m x 2.93m	13'2" x 9'7"
Garage	5.52m x 3.16m	18'0" x 10'4"

Gross Internal Area

Level	Area	
Ground Floor	72.90 m ²	784.40 ft ²
First Floor	43.30 m ²	465.70 ft ²
	116.10 m ²	1250.20 ft ²

**CONSUMER
CODE FOR
HOME BUILDERS**

www.consumercode.co.uk



FLOREAT