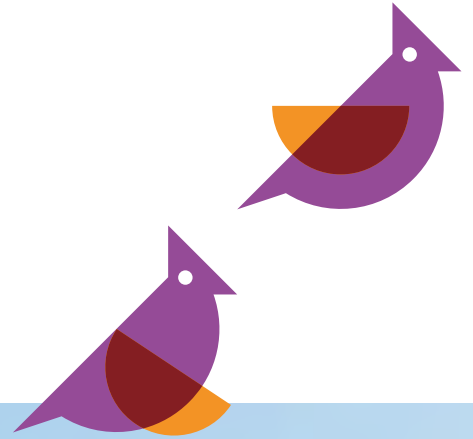


Centurion Village



3 & 4 bedroom homes available
through Shared Ownership

Leyland, PR26 6TD

0161 447 5050 / sales@plumlife.co.uk

People. Places. Purpose.

Plumlife
homes 



Welcome to Centurion Village

We're delighted to welcome you to Centurion Village, a stunning collection of three- and four-bedroom homes located a stone's throw away from Leyland. These beautiful new houses are part of a larger Barratt Homes development.

Situated in an idyllic location, residents can enjoy a vibrant community ambiance while being surrounded by picturesque landscapes. Nestled within the Lancashire woodlands, this development has an abundance of green spaces, making this the perfect place for those who love to explore the outdoors. The local area also boasts excellent transportation links to city centre amenities, making it convenient for commuting and exploring nearby cities and towns.

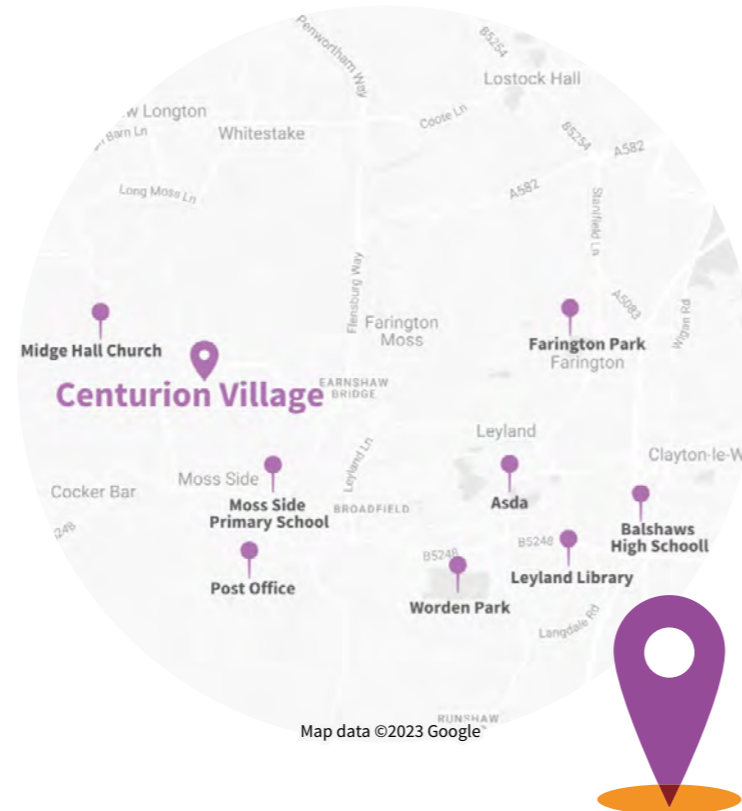
Buyers can enjoy living in this sought after area much more easily, with Shared Ownership. This means that new homebuyers can buy a share of the home that they can afford and then pay rent on the remaining share.





Leyland, Lancashire

Surrounding Centurion Village in Leyland, residents are spoiled for choice with an abundance of things to do and enjoy. The local area offers an array of parks and green spaces, such as Worden Park, providing the perfect setting for leisurely walks, picnics and outdoor activities. Additionally, there is a diverse selection of shops, from charming boutiques to well-known retail chains in the centre of Leyland, located less than 8 minutes away from the site. Here you can also find a variety of restaurants, bars, cafes and pubs, offering a wide range of cuisines to satisfy every palate. For families with children, there are a number of 'Good' and 'Outstanding' rated schools in the vicinity, providing peace of mind for parents seeking quality education options for their little ones. With its superb transport links and top-rated schools, the local area of Centurion Village offers both practicality and excellent opportunities for residents of all ages.



Nearby to Centurion Village

- | | | | | | |
|---------------------------------|----------|-----------------------------|-----------|--------------------------|-----------|
| Asda Supermarket | 🚗 6 mins | Post Office | 🚶 7 mins | Midge Hall Church | 🚶 1 mins |
| Centre of Leyland | 🚗 7 mins | Balshaws High School | 🚗 9 mins | Farington Park | 🚗 10 mins |
| Worden Park | 🚗 9 mins | Leyland Library | 🚗 7 mins | | |
| Moss Side Primary School | 🚗 4 mins | Preston City Centre | 🚗 15 mins | | |

Getting around in Leyland

- Leyland Train station 🚆 11 mins
2.4 miles
- Links to Preston (A6 Motorway) 🚗 11 mins
3.8 miles
- Methodist Church Bus Stop to Town Centre 🚶 1 mins
256ft
- Links to South Manchester (M6 Motorway) 🚗 13 mins
3.5 miles



Did you know?

Did you know that Leyland was home to the one of the UK's most iconic car and commercial vehicle manufacturers, British Leyland Motor Corporation. The land that Centurion Village sits on was once a bustling test track for groundbreaking vehicles, and as a result, the streets of this development are named after the classic truck and bus models that once roamed the tracks. Now you can immerse yourself in the rich automotive history of Leyland, where every street tells a story of innovation and progress!



Centurion Village



The Alderney

4 Bedroom home
Plots 204, 212



The Kingsley

4 Bedroom home
Plots 209



The Birchmoor

3 Bedroom home
Plots 167, 168, 169, 193, 194



The Kingsville

3 Bedroom home
Plots 54, 96, 105, 110, 111, 130,
131, 210, 211, 213, 214, 215



The Brentford

3 Bedroom home
Plots 48, 55, 95, 106, 109



The Lutterworth

3 Bedroom home
Plots 94, 115



The Chester

4 Bedroom home
Plots 123



The Maidstone

3 Bedroom home
Plots 186



The Ellerton

3 Bedroom home
Plots 126, 136, 137, 195, 205,
206, 207



The Moresby

3 Bedroom home
Plots 132, 135, 185, 196, 199,
208



The Folkstone

3 Bedroom home
Plots 124, 125



The Roxby

3 Bedroom home
Plots 116



The Hale

4 Bedroom home
Plots 49, 112



The Woodcote

4 Bedroom home
Plots 97, 98





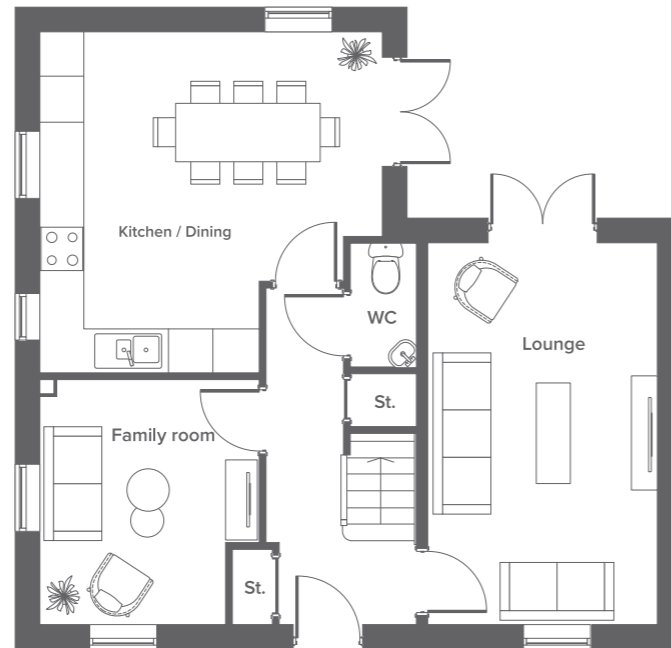
The Alderney

4 Bedroom home
 Plots: 204*, 212*
 Sq.m: 113.8
 Sq.ft: 1225



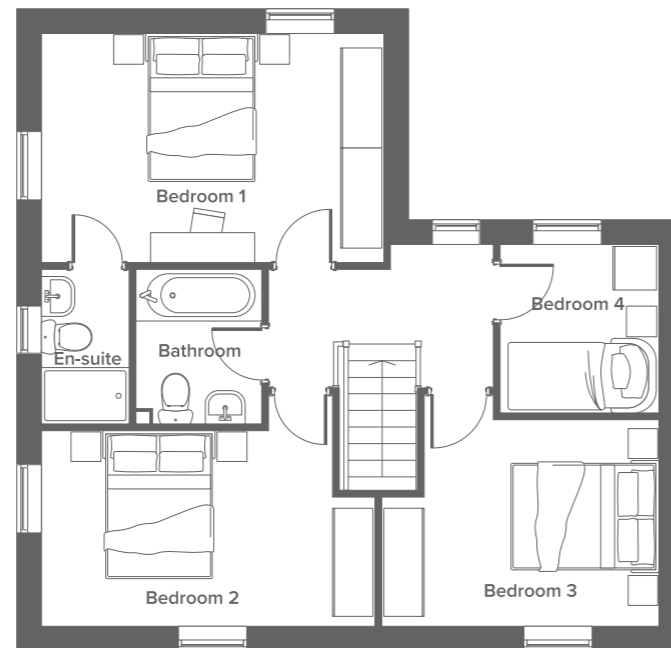
Ground Floor

Kitchen/Diner Metres: 4.6 x 4.6 Feet: 15.0 x 15.0	Family Room Metres: 3.3 x 3.0 Feet: 10.8 x 9.8
Lounge Metres: 5.1 x 3.1 Feet: 16.7 x 10.1	W/C Metres: 1.7 x 0.9 Feet: 5.5 x 2.9



First Floor

Master Bedroom Metres: 4.6 x 3.1 Feet: 15.0 x 10.1	Third Bedroom Metres: 3.7 x 3.1 Feet: 12.1 x 10.1
Ensuite Metres: 2.1 x 1.2 Feet: 6.8 x 3.9	Fourth Bedroom Metres: 2.3 x 2.2 Feet: 7.5 x 7.2
Second Bedroom Metres: 4.5 x 3.1 Feet: 14.7 x 10.1	Bathroom Metres: 2.1 x 1.7 Feet: 6.8 x 5.5



*Plots 204, 212 have garages

Disclaimer
 The details in this brochure are subject to change and do not constitute part of a contract. Prospective buyers must satisfy themselves by inspection or otherwise as to the accuracy of information given in this brochure. Images are provided for illustration purposes only and may differ to the homes available; please ask a sales advisor for more information.



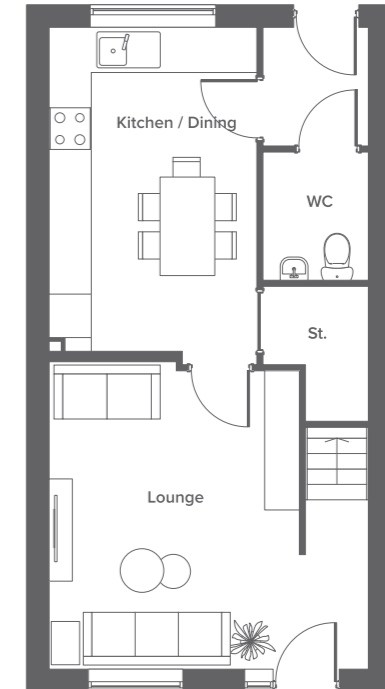
The Birchmoor

3 Bedroom home
 Plots: 167, 168, 169, 193, 194
 Sq m: 86.1
 Sq ft: 927



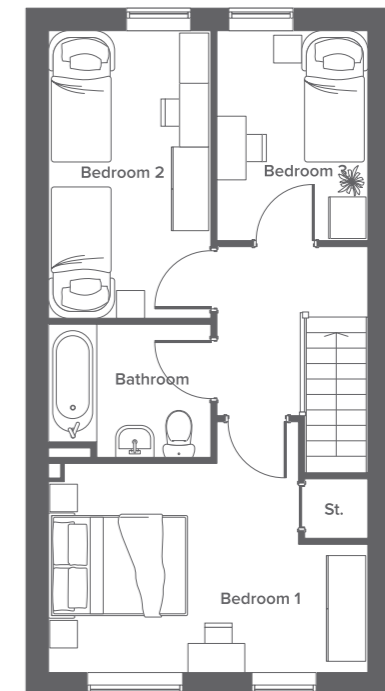
Ground Floor

Kitchen/Diner Metres: 3.0 x 4.7 Feet: 9.8 x 15.4	W/C Metres: 1.4 x 1.9 Feet: 4.5 x 6.2
Lounge Metres: 4.6 x 4.5 Feet: 15.0 x 14.6	



First Floor

Master Bedroom Metres: 4.6 x 3.0 Feet: 15.0 x 9.8	Bathroom Metres: 2.4 x 1.9 Feet: 7.8 x 6.2
Second Bedroom Metres: 2.4 x 4.2 Feet: 7.8 x 13.7	
Third Bedroom Metres: 2.2 x 3.0 Feet: 7.2 x 9.8	



Disclaimer
 The details in this brochure are subject to change and do not constitute part of a contract. Prospective buyers must satisfy themselves by inspection or otherwise as to the accuracy of information given in this brochure. Images are provided for illustration purposes only and may differ to the homes available; please ask a sales advisor for more information.



The Brentford

3 Bedroom home
 Plots: 48, 55, 95*, 106*, 109
 Sq.m: 107.9
 Sq.ft: 1162

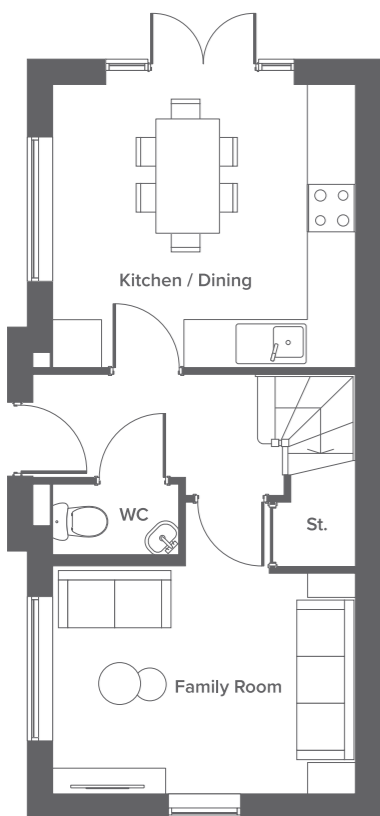


Ground Floor

Kitchen/Diner
 Metres: 3.9 x 3.6
 Feet: 12.7 x 11.8

W/C
 Metres: 0.9 x 1.7
 Feet: 2.9 x 5.5

Family Room
 Metres: 3.9 x 2.8
 Feet: 12.7 x 9.1

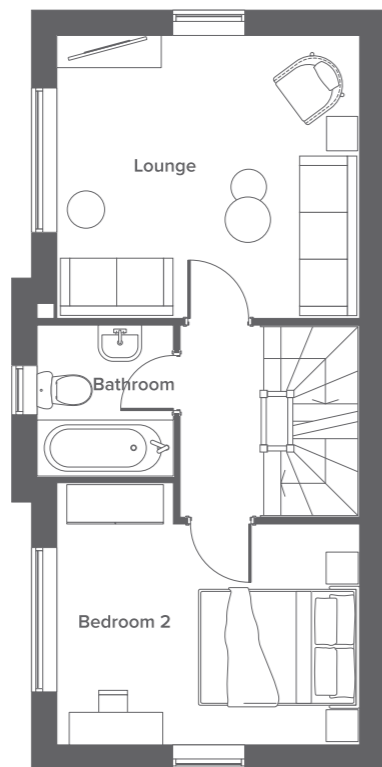


First Floor

Lounge
 Metres: 3.9 x 2.8
 Feet: 12.7 x 9.1

Bathroom
 Metres: 1.7 x 1.9
 Feet: 5.5 x 6.2

Second Bedroom
 Metres: 3.9 x 2.8
 Feet: 12.7 x 9.1

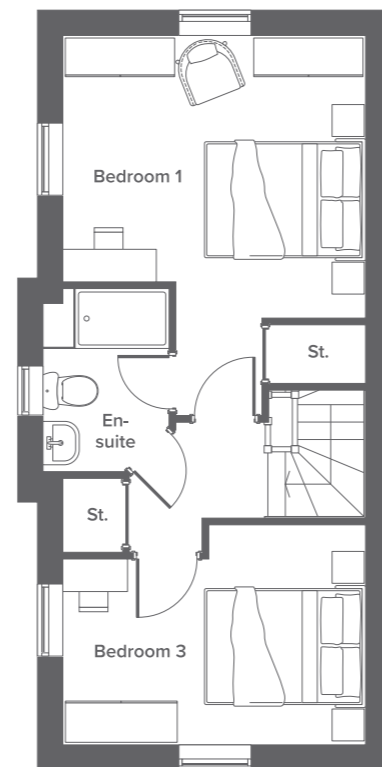


Second Floor

Master Bedroom
 Metres: 3.9 x 3.2
 Feet: 12.7 x 10.4

Third Bedroom
 Metres: 3.9 x 2.8
 Feet: 12.7 x 9.18

Ensuite
 Metres: 1.5 x 2.3
 Feet: 4.9 x 7.5



The Chester

4 Bedroom home
 Plots: 123*
 Sq.m: 95.9
 Sq.ft: 1032

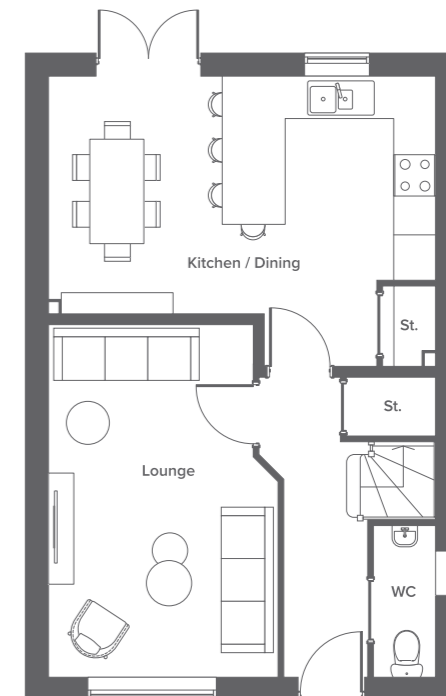


Ground Floor

Kitchen/Diner
 Metres: 5.5 x 2.9
 Feet: 18.0 x 9.5

W/C
 Metres: 0.9 x 2.5
 Feet: 2.9 x 8.2

Lounge
 Metres: 3.3 x 4.3
 Feet: 10.8 x 14.1



First Floor

Master Bedroom
 Metres: 2.7 x 3.6
 Feet: 8.8 x 11.8

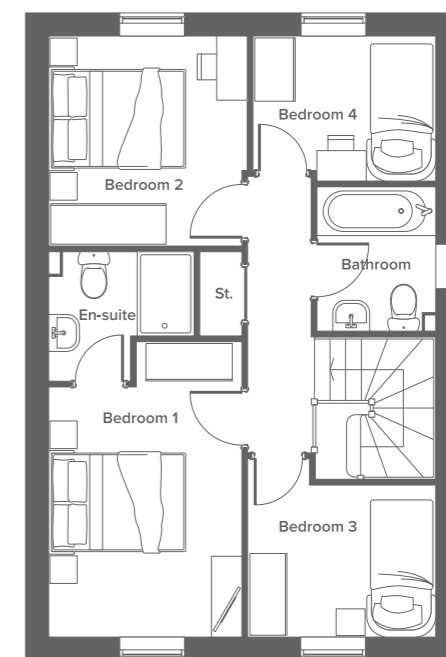
Third Bedroom
 Metres: 2.7 x 2.2
 Feet: 8.8 x 7.2

Ensuite
 Metres: 1.1 x 1.9
 Feet: 3.6 x 6.2

Fourth Bedroom
 Metres: 2.6 x 2.1
 Feet: 8.5 x 6.8

Second Bedroom
 Metres: 2.8 x 3.0
 Feet: 9.1 x 9.8

Bathroom
 Metres: 1.8 x 2.1
 Feet: 5.9 x 6.8



Disclaimer
 The details in this brochure are subject to change and do not constitute part of a contract. Prospective buyers must satisfy themselves by inspection or otherwise as to the accuracy of information given in this brochure. Images are provided for illustration purposes only and may differ to the homes available; please ask a sales advisor for more information.

*Plots 95, 106 have garages

Disclaimer
 The details in this brochure are subject to change and do not constitute part of a contract. Prospective buyers must satisfy themselves by inspection or otherwise as to the accuracy of information given in this brochure. Images are provided for illustration purposes only and may differ to the homes available; please ask a sales advisor for more information.

*Plot 123 has a garage



The Ellerton

3 Bedroom home

Plots: 126, 136, 195, 137, 205, 206, 207

Sq.m: 77.1

Sq.ft: 830



Ground Floor

Lounge

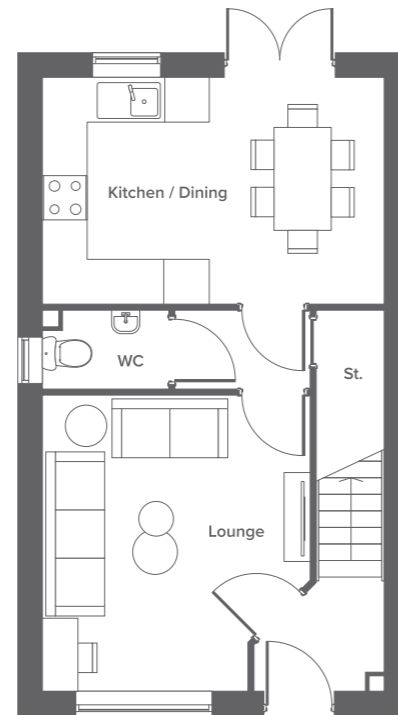
Metres: 3.6m x 4.0
Feet: 11.8 x 13.1

W/C

Metres: 1.7 x 1.1
Feet: 5.5 x 3.6

Kitchen/Diner

Metres: 4.6 x 3.0
Feet: 15.0 x 9.8



First Floor

Master Bedroom

Metres: 3.6m x 4.1
Feet: 11.8 x 13.4

Third Bedroom

Metres: 2.1m x 2.9
Feet: 6.8 x 9.5

Ensuite

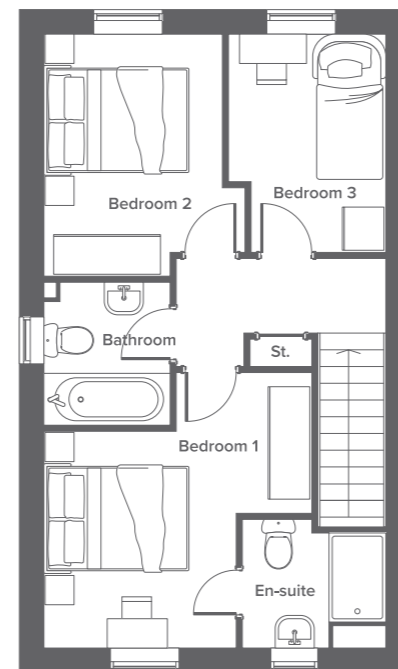
Metres: 2.0 x 1.6
Feet: 6.5 x 5.2

Bathroom

Metres: 1.7 x 1.9
Feet: 5.5 x 6.2

Second Bedroom

Metres: 2.7m x 3.3
Feet: 8.8 x 10.8



Disclaimer

The details in this brochure are subject to change and do not constitute part of a contract. Prospective buyers must satisfy themselves by inspection or otherwise as to the accuracy of information given in this brochure. Images are provided for illustration purposes only and may differ to the homes available; please ask a sales advisor for more information.



The Folkstone

3 Bedroom home

Plots: 124, 125

Sq.m: 77

Sq ft: 830



Ground Floor

Lounge/Diner

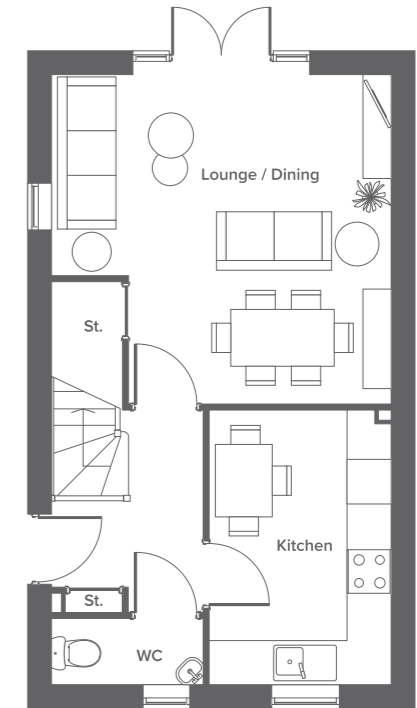
Metres: 4.6 x 4.5
Feet: 15.0 x 14.7

W/C

Metres: 2.1 x 0.9
Feet: 6.8 x 2.9

Kitchen

Metres: 2.4 x 3.7
Feet: 7.8 x 12.1



First Floor

Master Bedroom

Metres: 2.6 x 3.7
Feet: 8.5 x 12.1

Third Bedroom

Metres: 2.0 x 2.7
Feet: 6.5 x 8.8

Ensuite

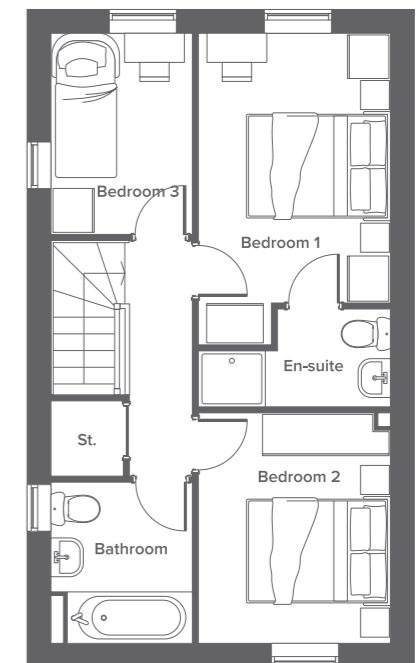
Metres: 2.6 x 1.4
Feet: 8.5 x 3.2

Bathroom

Metres: 2.0 x 2.2
Feet: 6.5 x 7.2

Second Bedroom

Metres: 2.6 x 3.1
Feet: 8.5 x 10.1



Disclaimer

The details in this brochure are subject to change and do not constitute part of a contract. Prospective buyers must satisfy themselves by inspection or otherwise as to the accuracy of information given in this brochure. Images are provided for illustration purposes only and may differ to the homes available; please ask a sales advisor for more information.



The Hale

4 Bedroom home
 Plots: 49, 112
 Sq.m: 122.3
 Sq ft: 1316



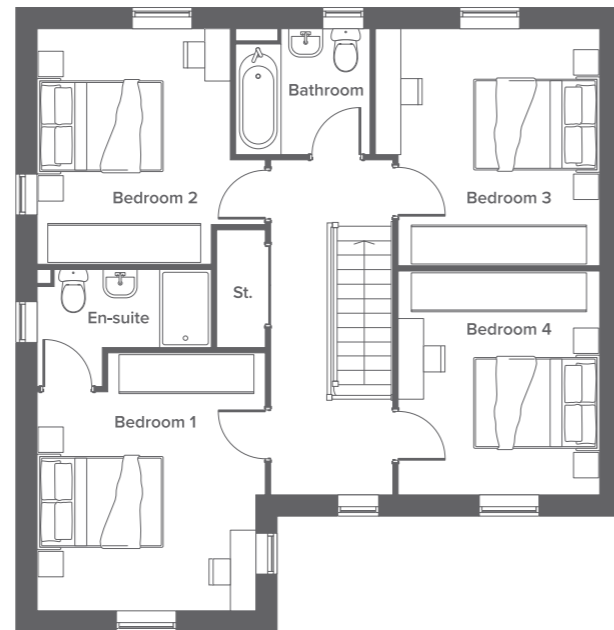
Ground Floor

Lounge Metres: 3.4 x 4.4 Feet: 11.1 x 14.4	Utility Metres: 2.0 x 1.7 Feet: 6.5 x 5.5
Kitchen/Diner Metres: 5.5 x 3.7 Feet: 18.0 x 12.1	W/C Metres: 1.1 x 1.7 Feet: 3.6 x 5.5



First Floor

Master Bedroom Metres: 4.0 x 3.4 Feet: 13.1 x 11.1	Third Bedroom Metres: 3.5 x 3.7 Feet: 11.4 x 12.1
Ensuite Metres: 1.2 x 2.7 Feet: 3.9 x 8.8	Fourth Bedroom Metres: 3.1 x 3.5 Feet: 10.1 x 11.4
Second Bedroom Metres: 3.0 x 3.7 Feet: 9.8 x 12.1	Bathroom Metres: 2.1 x 3.7 Feet: 6.8 x 12.1



Disclaimer
 The details in this brochure are subject to change and do not constitute part of a contract. Prospective buyers must satisfy themselves by inspection or otherwise as to the accuracy of information given in this brochure. Images are provided for illustration purposes only and may differ to the homes available; please ask a sales advisor for more information.



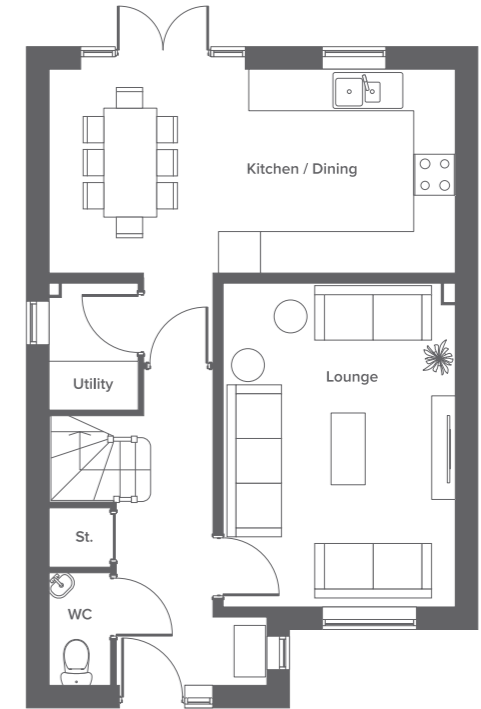
The Kingsley

4 Bedroom home
 Plots: 209*
 Sq.m: 100.8
 Sq ft: 1085



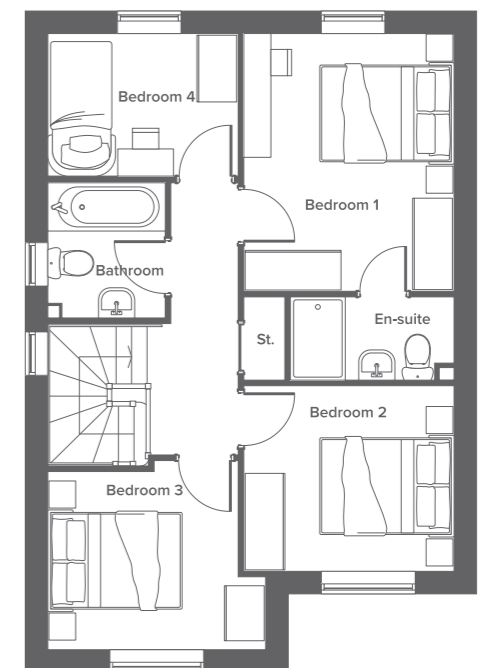
Ground Floor

Kitchen/Diner Metres: 5.9 x 3.0 Feet: 19.3 x 9.8	Utility Metres: 1.3 x 1.8 Feet: 4.2 x 5.9
Lounge Metres: 3.0 x 4.8 Feet: 9.8 x 15.7	W/C Metres: 0.9 x 1.7 Feet: 2.9 x 5.5



First Floor

Master Bedroom Metres: 3.0 x 3.7 Feet: 9.8 x 12.1	Third Bedroom Metres: 3.2 x 2.6 Feet: 10.4 x 8.5
Ensuite Metres: 2.4 x 1.2 Feet: 7.8 x 3.9	Fourth Bedroom Metres: 2.7 x 2.1 Feet: 8.8 x 6.8
Second Bedroom Metres: 2.7 x 2.7 Feet: 8.8 x 8.8	Bathroom Metres: 1.7 x 2.0 Feet: 5.5 x 6.5



Disclaimer
 The details in this brochure are subject to change and do not constitute part of a contract. Prospective buyers must satisfy themselves by inspection or otherwise as to the accuracy of information given in this brochure. Images are provided for illustration purposes only and may differ to the homes available; please ask a sales advisor for more information.

*Plot 209 has a garage



The Kingsville

3 Bedroom home

Plots: 54, 96, 105, 110, 111, 130, 131, 210, 211, 213, 214, 215
 Sq.m: 99.6
 Sq ft: 1072



Ground Floor

Family/Dining
 Metres: 3.9 x 4.8
 Feet: 12.7 x 15.7

Study
 Metres: 1.9 x 2.7
 Feet: 6.2 x 8.8

Kitchen
 Metres: 1.9 x 3.0
 Feet: 6.2 x 9.8

W/C
 Metres: 0.7 x 1.6
 Feet: 2.2 x 5.2



First Floor

Lounge
 Metres: 3.9 x 3.6
 Feet: 12.7 x 11.8

Ensuite
 Metres: 1.6 x 2.2
 Feet: 5.2 x 7.2

Master Bedroom
 Metres: 3.9 x 3.0
 Feet: 12.7 x 9.8

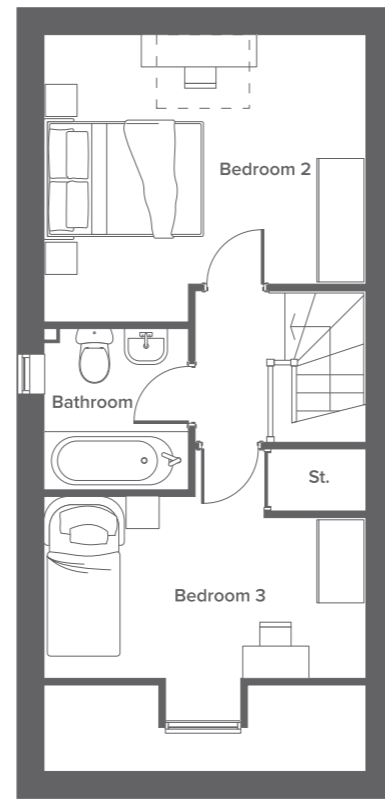
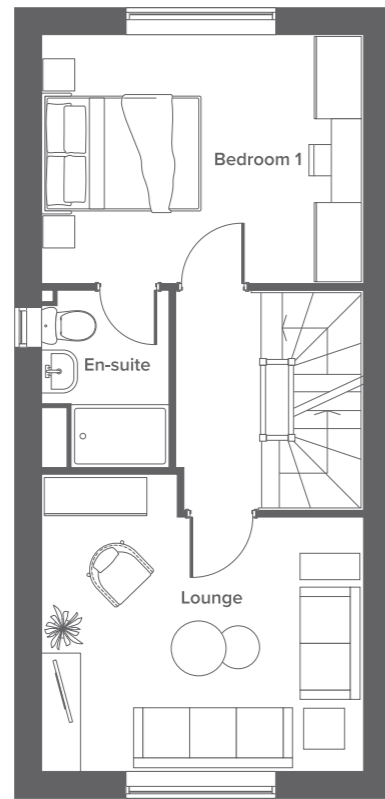
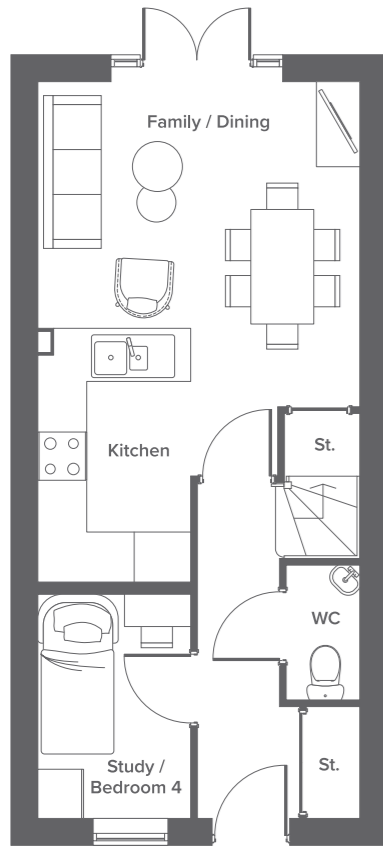


Second Floor

Second Bedroom
 Metres: 3.9 x 3.5
 Feet: 12.7 x 11.4

Bathroom
 Metres: 1.9 x 2.7
 Feet: 6.2 x 8.8

Third Bedroom
 Metres: 3.9 x 3.3
 Feet: 12.7 x 10.8



Disclaimer
 The details in this brochure are subject to change and do not constitute part of a contract. Prospective buyers must satisfy themselves by inspection or otherwise as to the accuracy of information given in this brochure. Images are provided for illustration purposes only and may differ to the homes available; please ask a sales advisor for more information.



The Lutterworth

3 Bedroom home

Plots: 94,115
 Sq.m: 92.9
 Sq ft: 1000

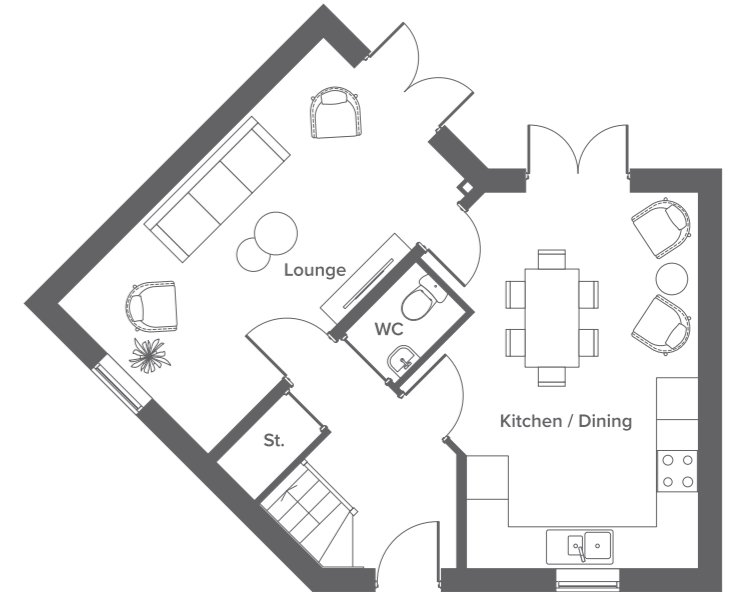


Ground Floor

Kitchen/Diner
 Metres: 3.7 x 5.4
 Feet: 12.1 x 17.7

W/C
 Metres: 1.0 x 1.7
 Feet: 3.2 x 5.5

Lounge
 Metres: 3.0 x 5.4
 Feet: 9.8 x 17.7



First Floor

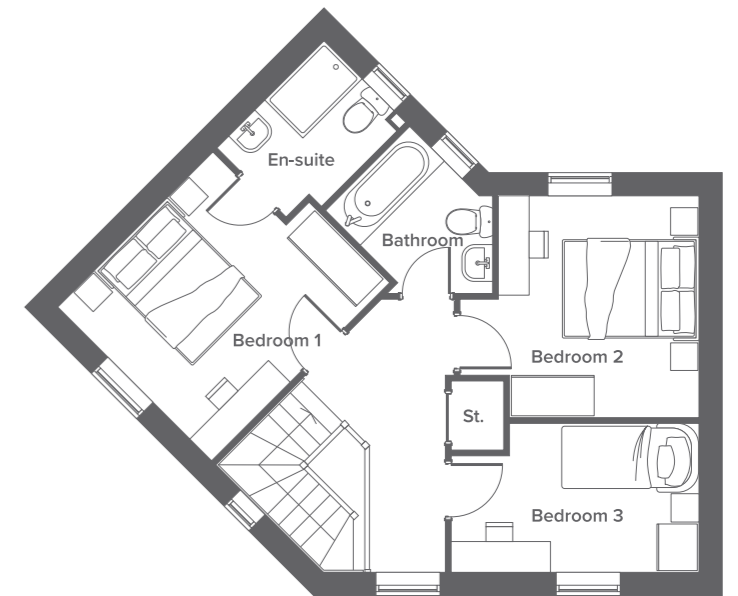
Master Bedroom
 Metres: 3.1 x 3.1
 Feet: 10.1 x 10.1

Third Bedroom
 Metres: 3.5 x 2.1
 Feet: 11.4 x 6.8

Ensuite
 Metres: 1.6 x 2.1
 Feet: 5.2 x 6.8

Bathroom
 Metres: 1.4 x 2.2
 Feet: 4.5 x 7.2

Second Bedroom
 Metres: 2.8 x 3.2
 Feet: 9.1 x 10.4



Disclaimer
 The details in this brochure are subject to change and do not constitute part of a contract. Prospective buyers must satisfy themselves by inspection or otherwise as to the accuracy of information given in this brochure. Images are provided for illustration purposes only and may differ to the homes available; please ask a sales advisor for more information.



The Maidstone

3 Bedroom home

Plot: 186
Sq.m: 77.1
Sq ft: 830

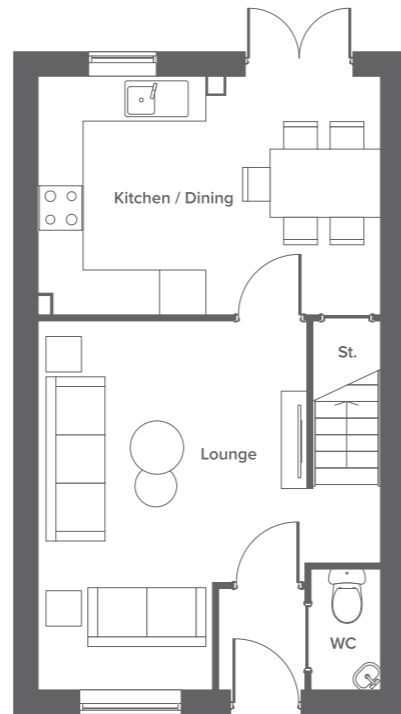


Ground Floor

Kitchen/Diner
Metres: 3.2 x 4.6
Feet: 10.4 x 15.0

W/C
Metres: 0.9 x 1.6
Feet: 2.9 x 5.2

Lounge
Metres: 5.0 x 3.6
Feet: 16.4 x 11.8



First Floor

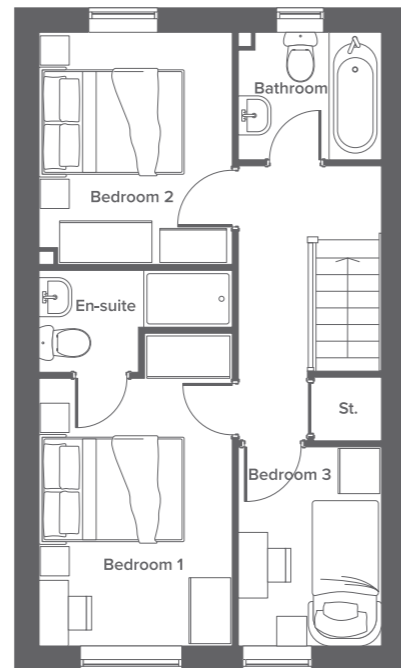
Master Bedroom
Metres: 4.2 x 2.6
Feet: 13.7 x 8.5

Third Bedroom
Metres: 1.9 x 2.7
Feet: 6.2 x 8.8

Ensuite
Metres: 1.4 x 1.4
Feet: 4.5 x 4.5

Bathroom
Metres: 1.9 x 1.7
Feet: 6.2 x 5.5

Second Bedroom
Metres: 3.1 x 2.6
Feet: 10.7 x 8.5



Disclaimer
The details in this brochure are subject to change and do not constitute part of a contract. Prospective buyers must satisfy themselves by inspection or otherwise as to the accuracy of information given in this brochure. Images are provided for illustration purposes only and may differ to the homes available; please ask a sales advisor for more information.



The Moresby

3 Bedroom home

Plot: 132, 135, 185, 196, 199, 208
Sq.m: 79.4
Sq ft: 854

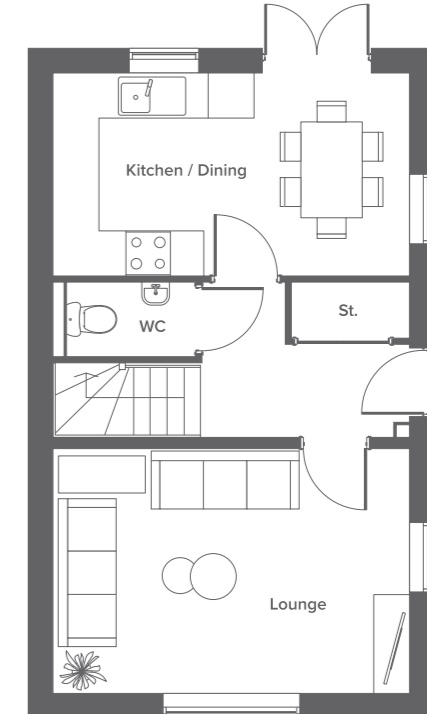


Ground Floor

Kitchen/Diner
Metres: 4.7 x 2.9
Feet: 15.4 x 9.5

W/C
Metres: 1.9 x 0.9
Feet: 6.2 x 2.9

Lounge
Metres: 4.7 x 3.3
Feet: 15.4 x 10.8



First Floor

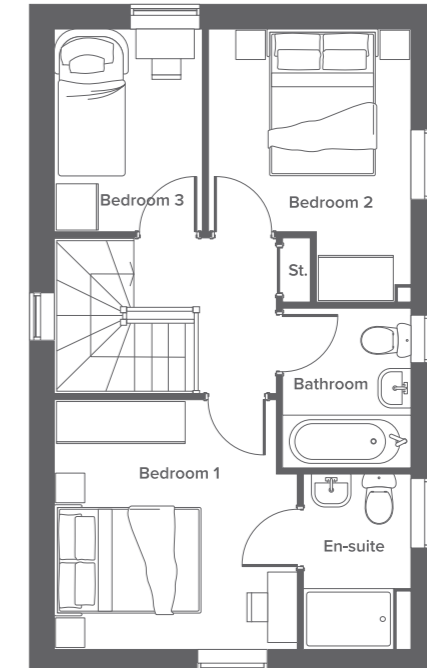
Master Bedroom
Metres: 3.2 x 3.3
Feet: 10.4 x 10.8

Third Bedroom
Metres: 2.7 x 2.0
Feet: 8.8 x 6.5

Ensuite
Metres: 1.5 x 2.4
Feet: 4.9 x 7.8

Bathroom
Metres: 2.1 x 1.7
Feet: 6.8 x 5.5

Second Bedroom
Metres: 2.7 x 3.6
Feet: 8.8 x 11.8



Disclaimer
The details in this brochure are subject to change and do not constitute part of a contract. Prospective buyers must satisfy themselves by inspection or otherwise as to the accuracy of information given in this brochure. Images are provided for illustration purposes only and may differ to the homes available; please ask a sales advisor for more information.



The Roxby

3 Bedroom home

Plots: 116
Sq.m: 71.8
Sq ft: 773

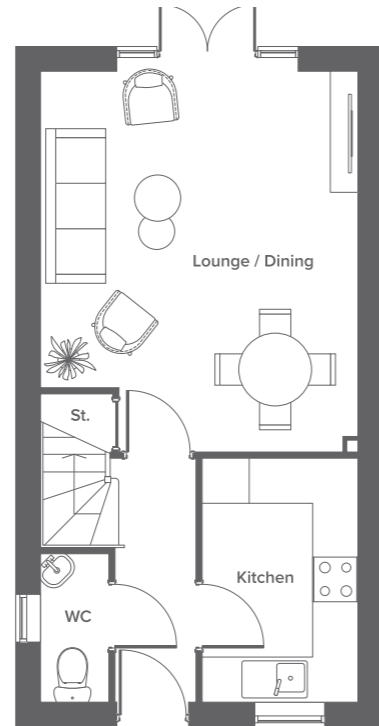


Ground Floor

Lounge/Diner
Metres: 4.2 x 5.0
Feet: 13.7 x 16.4

W/C
Metres: 0.9 x 2.0
Feet: 2.9 x 6.5

Kitchen
Metres: 2.1 x 3.3
Feet: 6.8 x 10.8



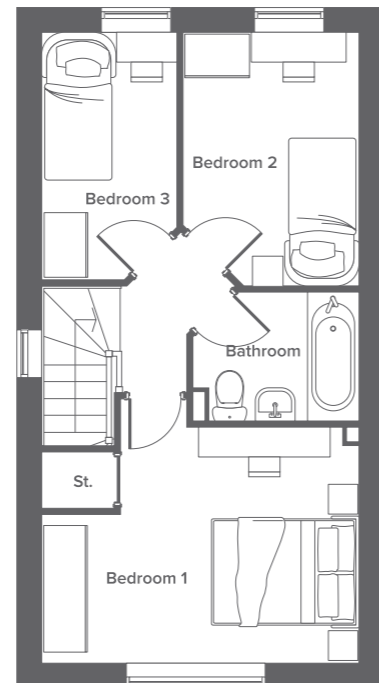
First Floor

Master Bedroom
Metres: 4.3 x 3.2
Feet: 14.1 x 10.4

Bathroom
Metres: 2.3 x 1.7
Feet: 7.5 x 5.5

Second Bedroom
Metres: 2.4 x 3.4
Feet: 7.8 x 11.1

Third Bedroom
Metres: 1.8 x 3.3
Feet: 5.9 x 10.8



The Woodcote

4 Bedroom home

Plots: 97, 98
Sq.m: 113.1
Sq ft: 1217

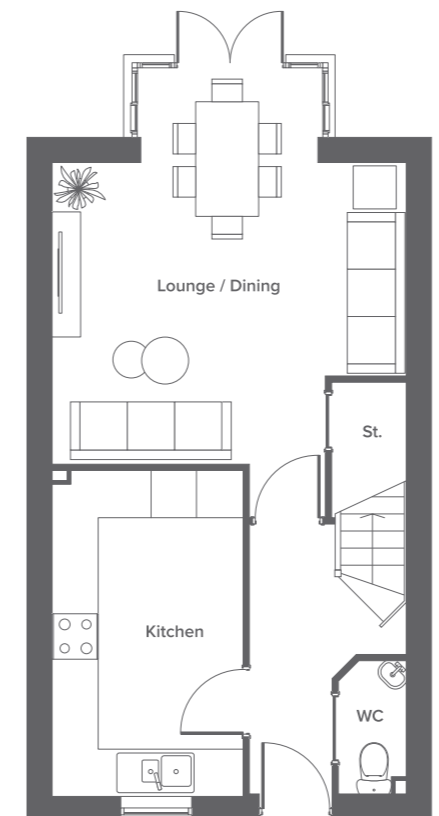


Ground Floor

Lounge/Diner
Metres: 4.7 x 5.0
Feet: 15.4 x 16.4

W/C
Metres: 0.9 x 1.8
Feet: 2.9 x 5.9

Kitchen
Metres: 2.5 x 4.2
Feet: 8.2 x 13.7



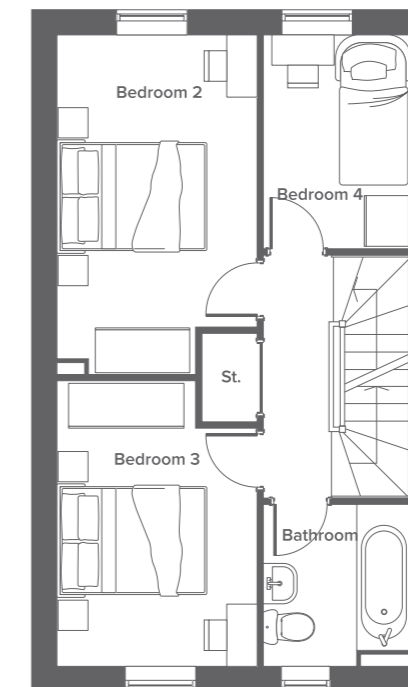
First Floor

Second Bedroom
Metres: 2.6 x 4.5
Feet: 8.5 x 14.7

Fourth Bedroom
Metres: 2.0 x 2.8
Feet: 6.5 x 9.1

Third Bedroom
Metres: 2.6 x 3.8
Feet: 8.5 x 12.4

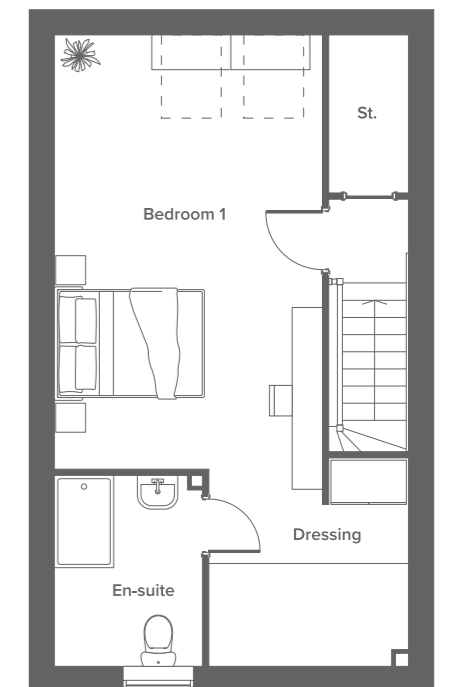
Bathroom
Metres: 2.0 x 2.1
Feet: 6.5 x 6.8



Second Floor

Master Bedroom
Metres: 3.5 x 5.7
Feet: 11.4 x 18.7

Ensuite
Metres: 2.0 x 2.5
Feet: 6.5 x 8.2



Disclaimer
The details in this brochure are subject to change and do not constitute part of a contract. Prospective buyers must satisfy themselves by inspection or otherwise as to the accuracy of information given in this brochure. Images are provided for illustration purposes only and may differ to the homes available; please ask a sales advisor for more information.

Disclaimer
The details in this brochure are subject to change and do not constitute part of a contract. Prospective buyers must satisfy themselves by inspection or otherwise as to the accuracy of information given in this brochure. Images are provided for illustration purposes only and may differ to the homes available; please ask a sales advisor for more information.

Specification

Kitchen

- Contemporary fitted Symphony kitchens
- Electric oven, gas hob & extractor hood in stainless steel finish*
- Plumbing for washing machine^Δ
- Splash back to hob area
- Comfytex vinyl flooring

Bathroom

- Contemporary chrome bathroom fittings
- CTD wall tiles to bathroom & Ensuite
- Chrome heated towel rails to bathroom & Ensuite^Δ
- Shower over the bath
- Comfytex vinyl flooring

Internal features

- Almond white matt emulsion to walls
- Chrome ironmongery to doors
- Patio doors to the rear^Δ
- LED downlights to kitchen and bathrooms^Δ
- Mains wired smoke alarm
- TV sockets to master bedroom and lounge
- Mains wired Carbon Monoxide Detector

*Electric hob to plot 94

^ΔThis may differ between plots

Disclaimer

The details in this brochure are subject to change and do not constitute part of a contract. Prospective buyers must satisfy themselves by inspection or otherwise as to the accuracy of information given in this brochure. Images are provided for illustration purposes only and may differ to the homes available; please ask a sales advisor for more information.

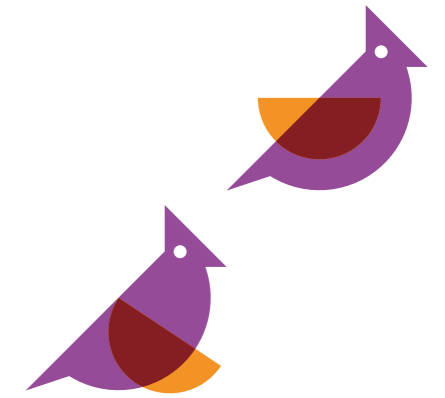


External features

- Fully turfed gardens
- Full height fencing
- Driveway parking to every property

General

- 10 year NHBC New Homes Warranty
- 'A' rated Ideal 'Logic' combination boiler





What is Shared Ownership?

Stepping into a new home that belongs to you is one of the best feelings in the world and with Shared Ownership, you might be able to have that feeling sooner than you think.

Shared Ownership is a way to buy a share in a home now with the option to buy more of it in the future. You pay a rent on the share of the home that you don't own.

Shared Ownership is a popular scheme for people who can't afford to buy a home on the open market. This is a common position to be in and our Shared Ownership customers are of varying ages and from all walks of life, with many being first time buyers in their early twenties and thirties, while some are looking to step back onto the property market in their forties through to seventies.

Initially, you can purchase the share of a home that you can afford, usually between 25-75% and then you'll pay

rent on the other share. On some newer Shared Ownership homes, lower shares may be available, subject to eligibility checks and further approval.

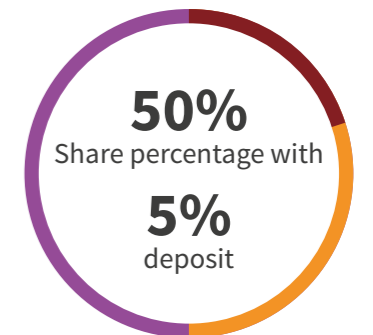
You'll need a minimum level of income and savings, the amount will be determined by the value of the home you want to buy, your personal circumstances, and your lender's requirements, but depending on which lender you use, the deposit can be as little as 5% of the share value. If you want to see what you could afford, why not head to our website at www.plumlife.co.uk and try out our affordability calculator? On our website you'll also be able to see a full list of Shared Ownership FAQs.



Who is eligible?

Certain key eligibility criteria apply to Shared Ownership, these include:

- Not owning any other property
- Being in permanent employment
- Having a household income of less than £80,000 per year
- In some cases, having work and/or family connections to the area in which you want to buy. Please check the requirements for the specific site you are interested in for more details.



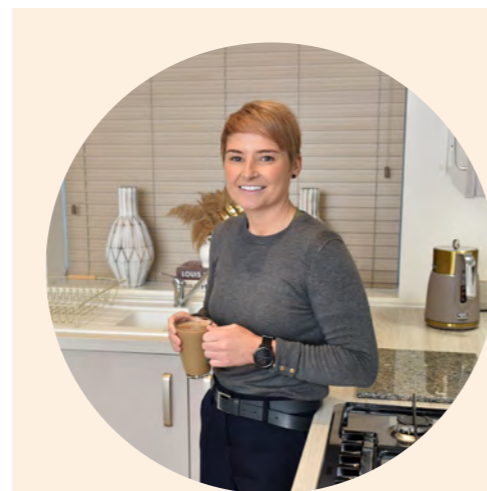
Example borrowing*

Work out the typical monthly costs of buying a Shared Ownership home using our handy affordability calculator. Simply input the value of the property you are interested in, select a share percentage, complete the remaining details, and the calculator will provide you with an example of what you can expect to pay on a monthly basis.

Full Market Value:	£200,000
Share Percentage:	50%
Deposit Amount: (£5,000)	5%
Mortgage Term:	30 years
Interest Rate:	5%
Share Value	£100,000
Mortgage amount	£95,000
Monthly Mortgage Costs:	£510
Monthly Rental Costs:	£229.17
Total monthly costs:	£739.17

Find out your results now at plumlife.co.uk

*Other fees not shown in calculations. This a guide only, not actual mortgage advice.



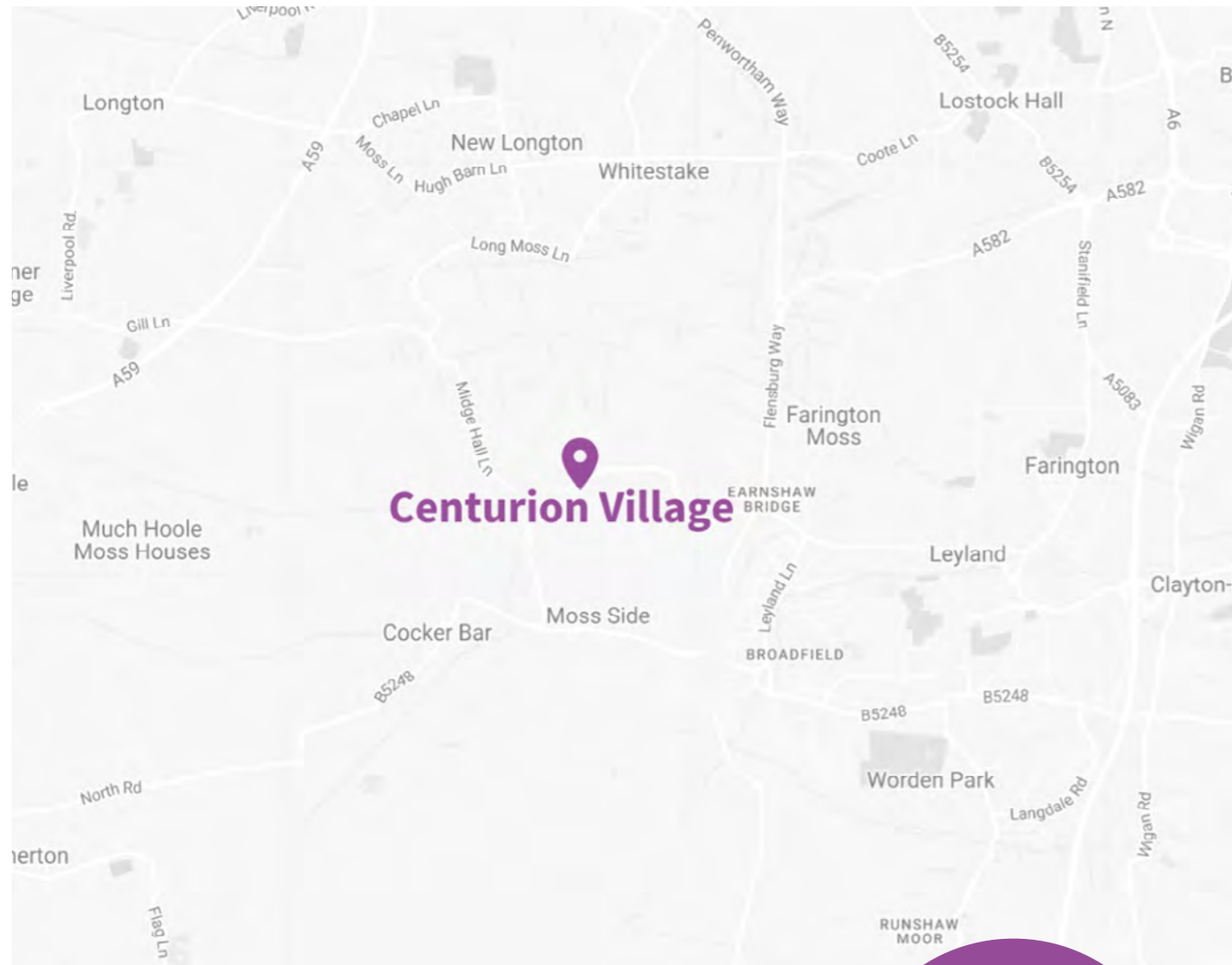
“Plumlife did everything we needed them to do and the fact we have been able to take advantage of the Shared Ownership scheme has been a god send for me and my girls. We couldn't ask for more.”

Jennifer

Getting a rung on the property ladder can seem like an unnerving prospect sometimes, especially when you have a busy family life that takes up your time. But the process can be much easier than you might think, as Jennifer, 34 found out.

Find out how Jennifer was able to make the move back to Lancaster, thanks to Plumlife Homes and Shared Ownership at

plumlife.co.uk/customer-stories



How to find us

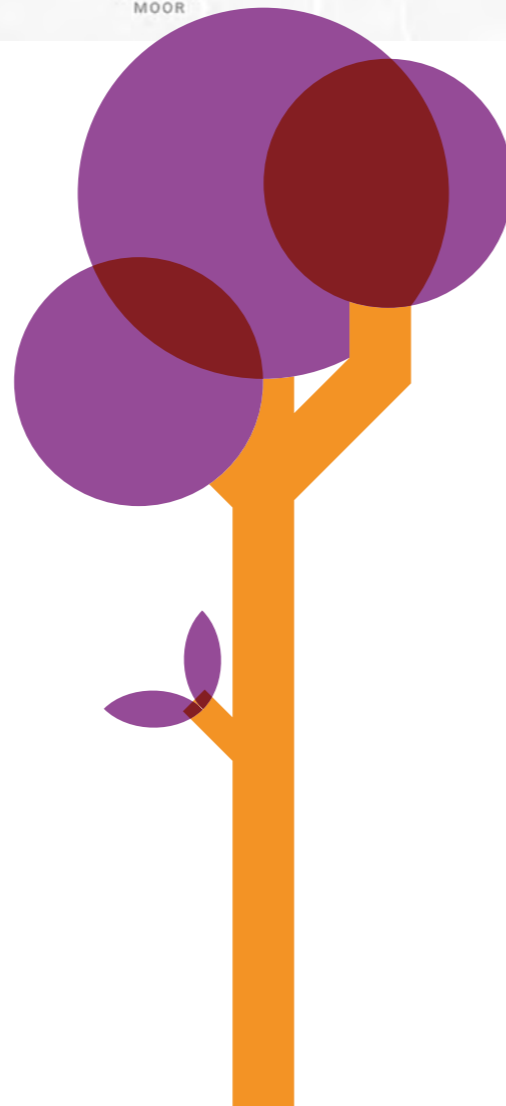
Pop in and see how we can help you find your new home.

Leyland benefits from excellent transport links, with easy access to major motorways, including the M6, M61 and M65, making it ideal for commuters and explorers alike.

To reach us you'll need to head down Flensburg Way. Take Comet Rd to Longmeanygate, this is the main entrance to the development.

The development is a:

- 9 min drive from Leyland Train Station
- 1 min walk from the Methodist Church Bus Stop



People. Places. Purpose.

Plumlife is a profit for purpose company, committed to creating great homes and growing successful, vibrant communities.

For over 20 years, our multi-award-winning teams have been helping first-time buyers with affordable home ownership while also providing high-quality sales and marketing, facilities management and lettings services to developers, local authorities and property companies. As well as selling hundreds of properties a year, we manage over 6,000 homes and many communal locations too.

Our 'People. Places. Purpose' strapline isn't just there for show - building and supporting great communities is at the heart of what we do. Plumlife, part of Manchester based Great Places

Housing Group, specialises in making home ownership easier for a wide range of people throughout the North West.

We offer highly desirable new build homes for sale via the government-backed Shared Ownership scheme.

From chic urban apartments, to family-friendly homes in the country - we're known for innovative and exciting developments designed to meet the lifestyles and aspirations of our customers.

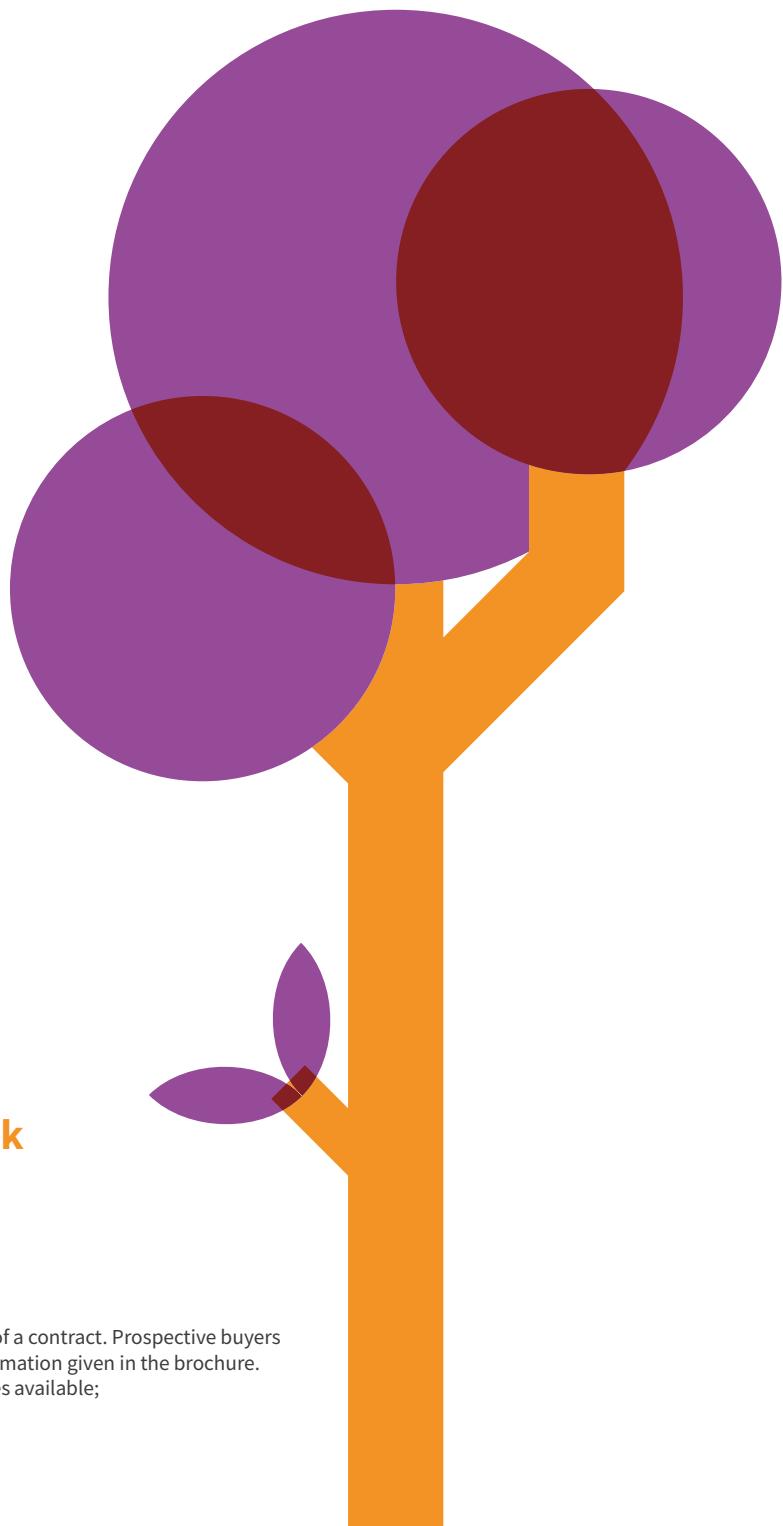
25,000
The number of homes that we manage, alongside our parent company Great Places Housing Group

£100k
The amount we invest annually into a network of community centres

60
The number of years that Plumlife's parent company has operated, albeit under a different name!



People. Places. Purpose.



Leyland, PR26 6TD

0161 447 5050 / sales@plumlife.co.uk

Disclaimer

The details in this brochure are subject to change and do not constitute part of a contract. Prospective buyers must satisfy themselves by inspection or otherwise as to the accuracy of information given in the brochure. Images are provided for illustration purposes only and may differ to the homes available; please ask a sales advisor for more information.