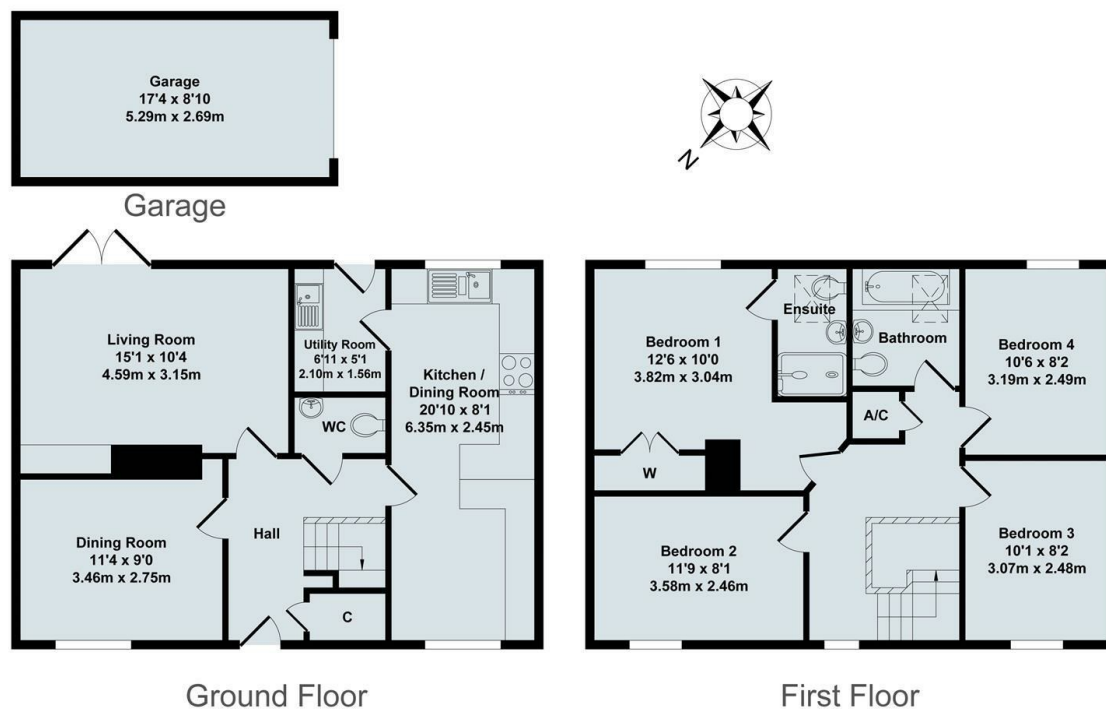




## 27 Larch Lane, Witney, Oxon, OX28 1AG

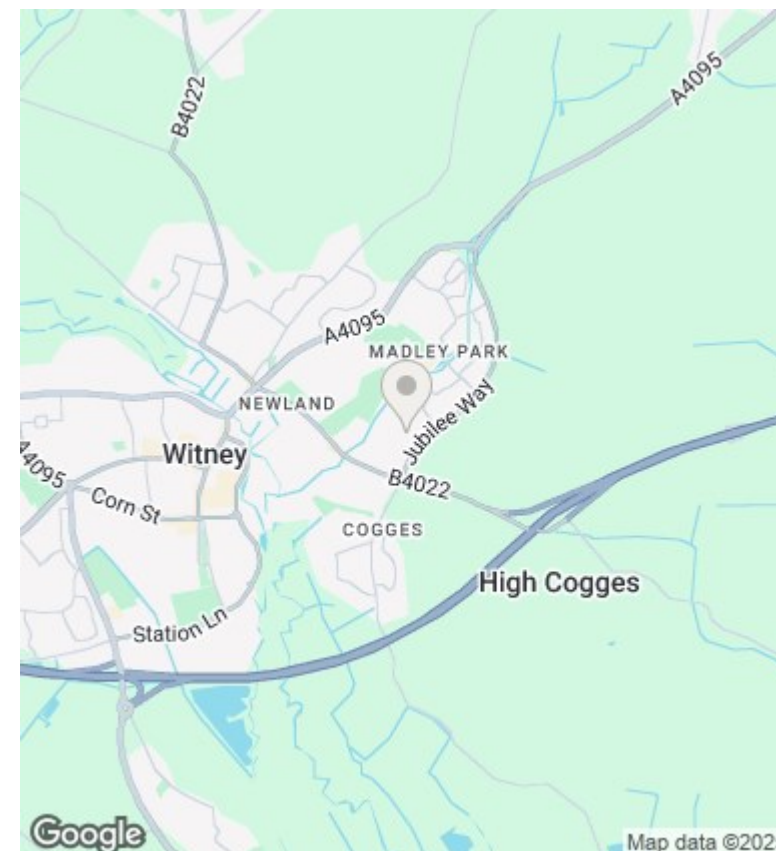
£1,880 PCM - 12th May 2025.

- Four bedroom house
- Gas CH
- Off street Parking
- Mains gas electricity and water
- Two bathrooms
- Garden
- EPC rating C
- Unfurnished
- Garage
- Council Tax band E



Total Approx. Floor Area 1356 Sq.Ft. (126.0 Sq.M.)

All items illustrated on this plan are included in the "Total Approx Floor Area"



## Directions

## Viewings

Viewings by arrangement only. Call 01865 515900 to make an appointment.

## Council Tax Band

E

## EPC Rating:

C

Energy Efficiency Rating		
	Current	Potential
Very energy efficient - lower running costs		
(92 plus) <b>A</b>		
(81-91) <b>B</b>		
(69-80) <b>C</b>		
(55-68) <b>D</b>		
(39-54) <b>E</b>		
(21-38) <b>F</b>		
(1-20) <b>G</b>		
Not energy efficient - higher running costs		
<b>England &amp; Wales</b>	EU Directive 2002/91/EC	

74

83