

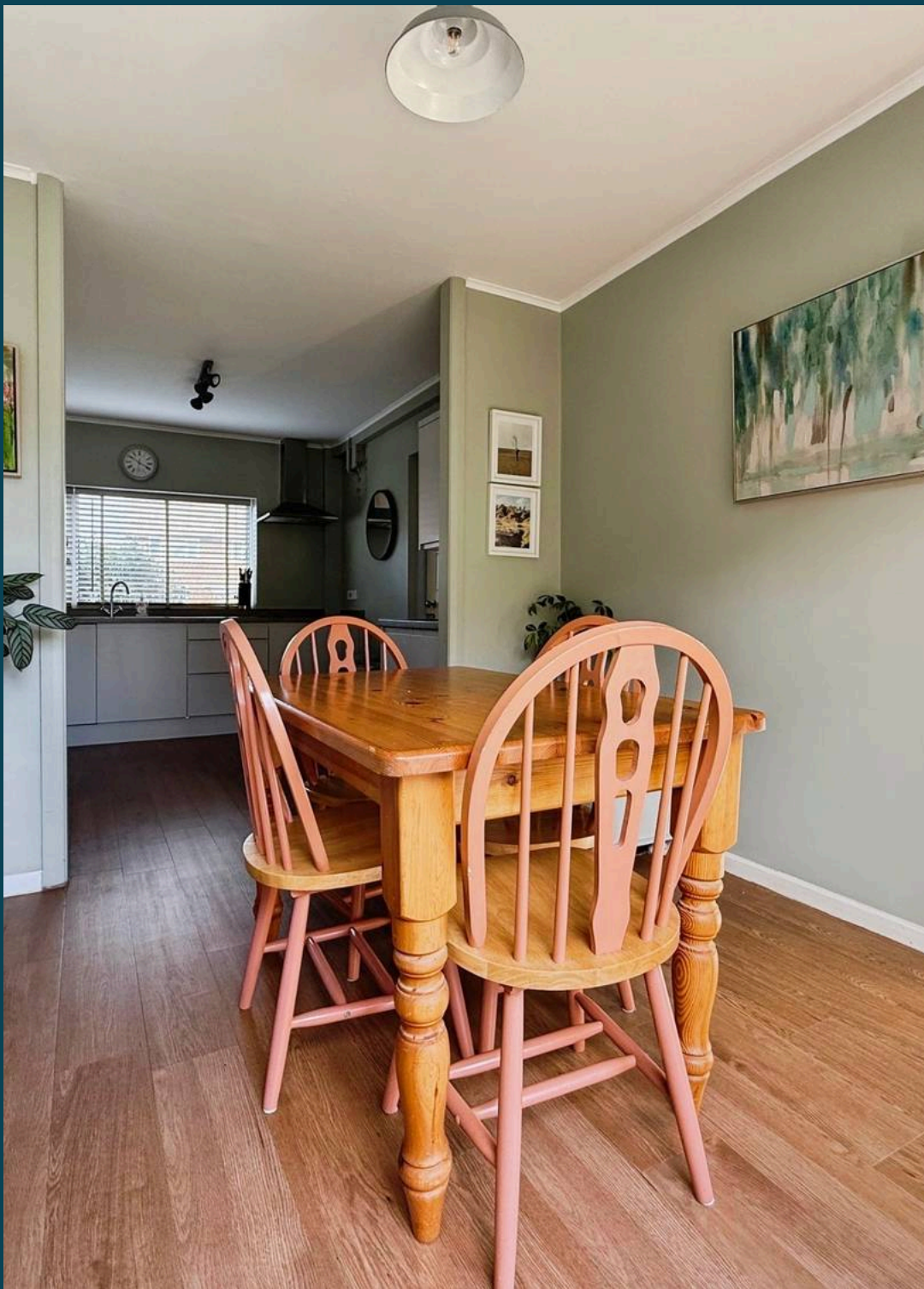


26 Pottingfield Road, Rye

Price Range £300,000-£315,000







## 26 Pottingfield Road

Price Range: £300,000-£315,000. Spacious three bedroom family home, large kitchen/diner, sizeable rear garden and off road parking for multiple vehicles. Walking distance to Rye Town Centre & schools.

Council Tax band: C

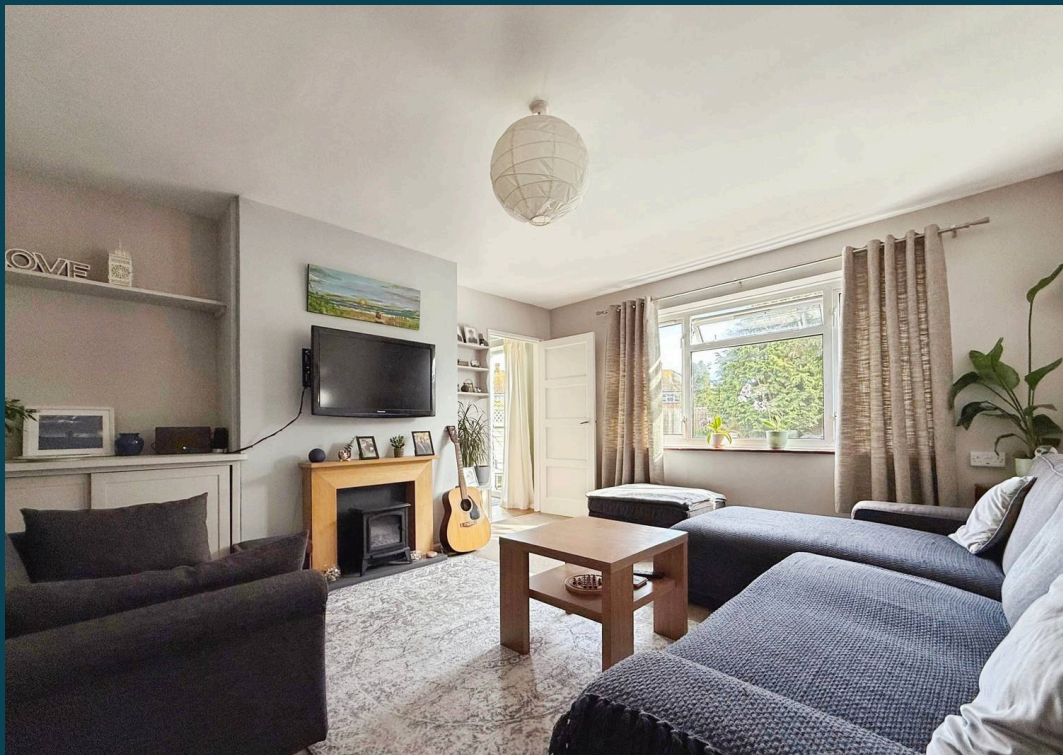
Tenure: Freehold

EPC Energy Efficiency Rating: C

EPC Environmental Impact Rating:

- Price Range £300,000-£315,000
- A Short Walk to Rye Town Centre
- Level Rear Garden
- Three Bedrooms
- Driveway
- Downstairs WC
- Dual Aspect Generous Kitchen/Diner
- Potential for Utility

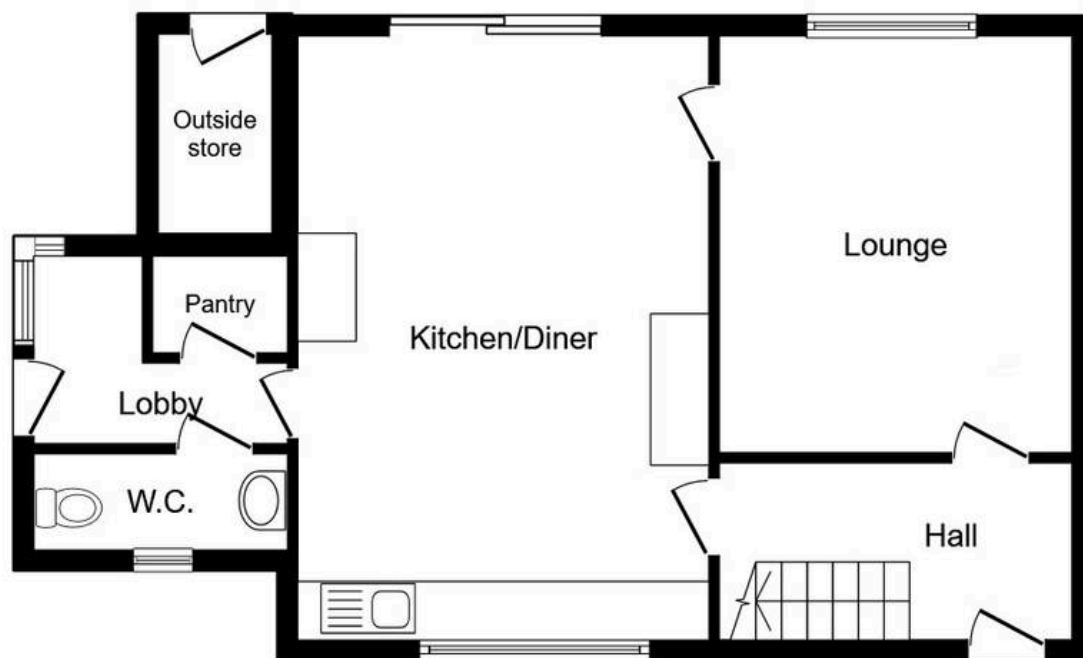




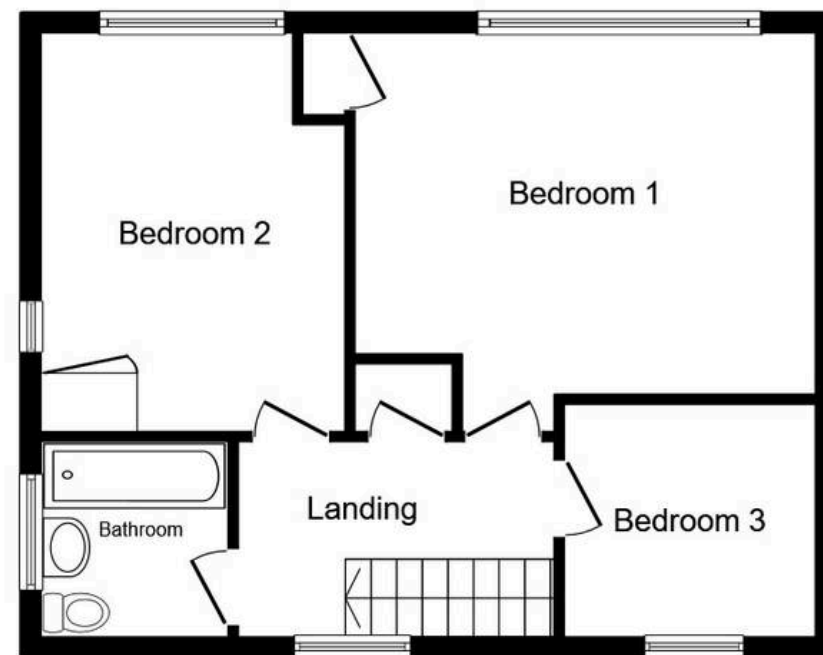








Ground Floor



First Floor





## Nested Rye

01797 903045 • [barnaby.osborne@nested.com](mailto:barnaby.osborne@nested.com) • [nested.com/barnaby-osborne](https://nested.com/barnaby-osborne)