



Amy Lee  
Independent Estate Agent

**Darlash Road, Weston Turville HP22 5ZJ**

In Excess of **£500,000**





## Darlash Road

Weston Turville, Aylesbury **HP22 5ZJ**

Beautifully styled 3-bed detached home with open-plan living, utility room, en suite, private garden and garage access. Close to schools, shops and travel links including the A41 linking to London.

Council Tax band: E (£2892.38 p/y)

Tenure: Freehold

EPC Energy Efficiency Rating: B

EPC Environmental Impact Rating: B

Estate Fee: £270 p/y

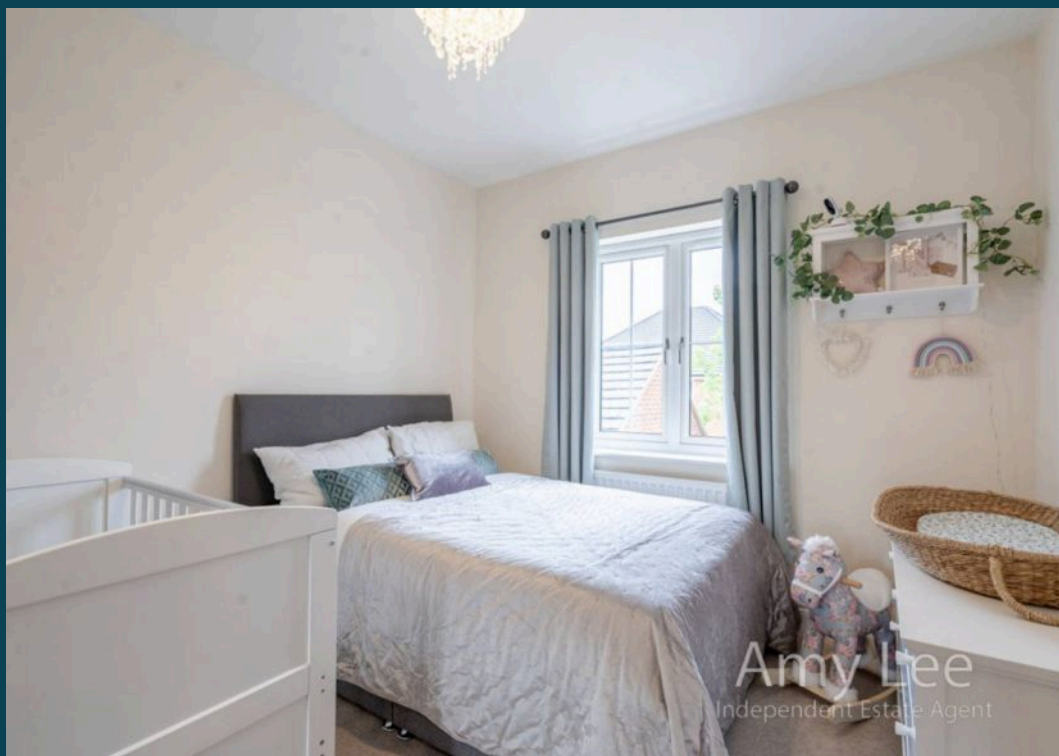
Developers: Carey Homes

Estate Management Company: Remus Property Management

- Beautifully styled detached Cheltenham-style home
- Built in 2019
- Open-plan kitchen, dining and living area
- Separate utility room and downstairs WC
- Three good-sized bedrooms with plenty of natural light
- Principal bedroom with en suite shower room
- Easterly facing garden with established maple and cherry blossom
- Garage
- Peaceful location close to schools, shops and transport links











Amy Lee  
Independent Estate Agent





Amy Lee  
Independent Estate Agent





Floor 1



Floor 2

**TOTAL: 987 sq. ft, 91 m2**

FLOOR 1: 488 sq. ft, 45 m2, FLOOR 2: 499 sq. ft, 46 m2

EXCLUDED AREAS: GARAGE: 222 sq. ft, 21 m2, PORCH: 18 sq. ft, 2 m2, PATIO: 182 sq. ft, 17 m2

Dimensions And Layout Are Approximate And Subject To Change Without Notice.





## Nested Aylesbury

Tower House, High Street, Aylesbury, Buckinghamshire, HP20 1SQ

01296920675 • [amy.lee@nested.com](mailto:amy.lee@nested.com) • [nested.com/aylesbury](https://nested.com/aylesbury)